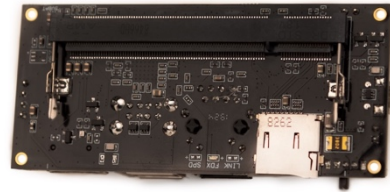
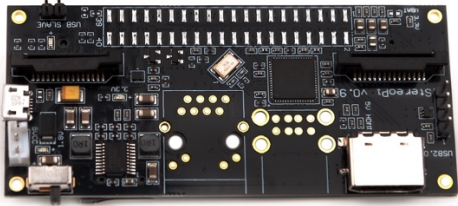


# StereoPi Slim Edition



---

## Brief Description

- StereoPi is a carrier board for a Raspberry Pi Compute Module.
- This is an open source stereoscopic camera based on Raspberry Pi. It can capture, save, livestream, and process real-time stereoscopic video and images. StereoPi opens up countless possibilities in robotics, AR/VR, computer vision, drone instrumentation, panoramic video, and more.
- **StereoPi Slim** edition is the same as the standard edition, but without all the bulky connectors - the Ethernet RJ45 jack, GPIO header, and dual USB Type-A connector have not been populated.

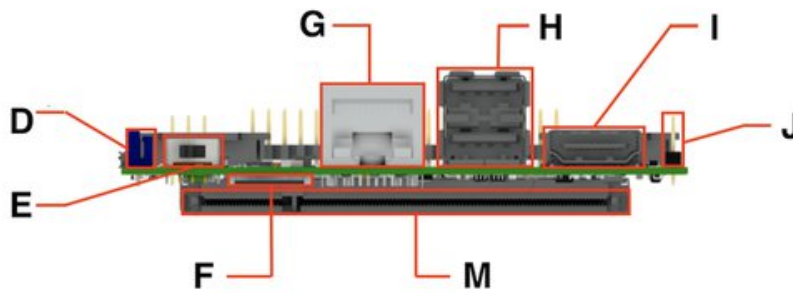
---

## Features & Specifications

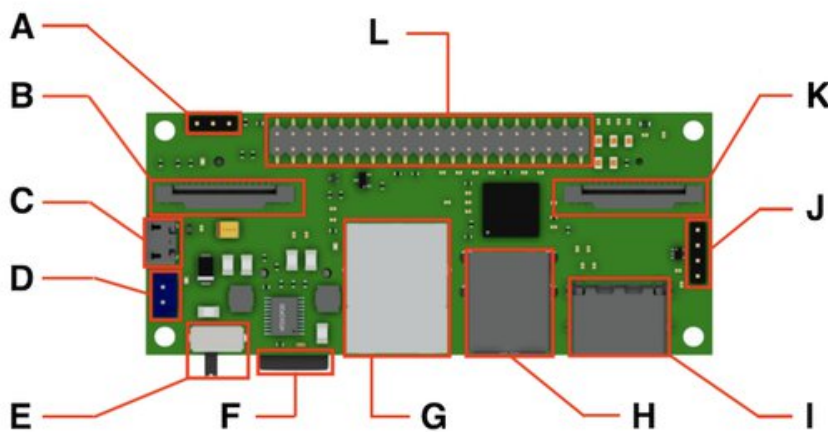
- **Raspberry Pi Compatibility:**
  - Raspberry Pi Compute Module 1 (requires 2<sup>nd</sup> power mode, check Wiki)
  - Raspberry Pi Compute Module 3
  - Raspberry Pi Compute Module 3 Lite
  - Raspberry Pi Compute Module 3+ 8 GB / 16 GB / 32 GB eMMC flash
  - Raspberry Pi Compute Module 3+ Lite
- **Dimensions:**
  - width x length: 90 mm x 40 mm
  - height: 23 mm (standard edition) / 15 mm (slim edition)
- **Video:**
  - input: two 15-pin CSI-2 camera connectors
  - output: HDMI
- **Camera Support:**
  - Raspberry Pi camera V1 (OV5647 sensor)
  - Raspberry Pi camera V2 (Sony IMX 219 sensor)
  - HDMI video capture module (single mode, on Toshiba TC358743XBG chip)
- **Connectivity:**
  - GPIO: 40-pin classic Raspberry Pi header
  - USB: 2 x USB Type-A, 1 x USB pin header
  - Ethernet: RJ45 jack
- **Storage:**
  - microSD card slot (accessed by Raspberry Pi CM3/3+ Lite)
- **Power:**
  - 5 VDC input via two-pin header
  - manual power switch
- **Software:**
  - firmware update via Micro USB connector
  - runs standard Raspbian

# Specific details

StereoPi Standard Edition



Front view



Top view

A. boot mode jumper	H. dual USB Type-A connector <b>Not installed on Slim edition</b>
B. camera 1 CSI-2 connector	I. HDMI out
C. micro USB (for firmware upload)	J. USB port pin header
D. 5 VDC power connector	K. camera 2 CSI-2 connector
E. power switch	L. 40-pin RPi GPIO header <b>Not installed on Slim edition</b>
F. microSD slot	M. RPi Compute SO-DIMM connector
G. RJ45 Ethernet jack <b>Not installed on Slim edition</b>	

# Additional information

StereoPi Slim edition is **RoHS 3 Compliant**

## X-ON Electronics

Largest Supplier of Electrical and Electronic Components

*Click to view similar products for [Video IC Development Tools](#) category:*

*Click to view products by [Crowd Supply](#) manufacturer:*

Other Similar products are found below :

[TW6872-NA1-CR-EVALZ](#) [MAX3815AHDMIEVKIT+](#) [1937](#) [ADZS-DECODE-EX3](#) [SEN0173](#) [EBK-GS2972-00](#) [LF-PNV-EVN](#) [EP-DCOV2735-F36](#) [UP-PACK-VISION-002](#) [3100](#) [3202](#) [3415](#) [397](#) [EVAL-AD9984AEBZ](#) [EVAL-ADV7280EBZ](#) [EVAL-ADV7281MAEBZ](#) [EVAL-ADV7282EBZ](#) [EVAL-ADV7341EBZ](#) [107784](#) [108024](#) [108025](#) [108320](#) [108329](#) [VM800BU35A-PL](#) [VM801B43A-BK](#) [VM801B50A-BK](#) [VM801P50A-BK](#) [VM801P43A-BK](#) [DFR0498](#) [82535IVCQSPL04N](#) [82634DSQSCR](#) [030-0276-0101\\_A](#) [QC-DB-I10006](#) [DP-VIP-I-EVN](#) [DP-VIP-O-EVN](#) [USB3-VIP-EVN](#) [CS-DEPTHAI-05](#) [CS-DEPTHAI-06](#) [AGB1N0CS-GEVK](#) [PIM365](#) [PIM366](#) [101020892](#) [103990057](#) [114991702](#) [EBK-GS2971A-00](#) [P0447](#) [EVAL-ADV7281EBZ](#) [EVAL-ADV7283EBZ](#) [MXOV10635-S32V](#) [OV10640CSP-S32V](#)