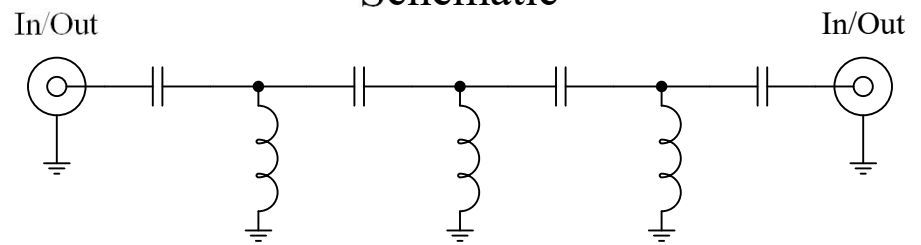




Schematic



Features:

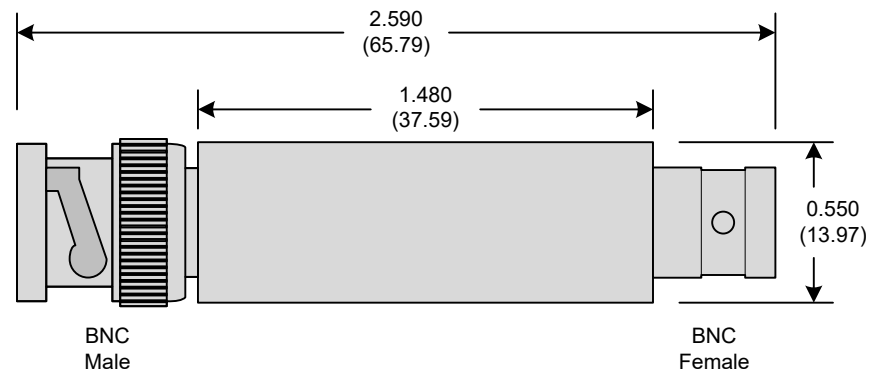
- 7th Order Chebyshev Response
- 50Ω BNC Connectors

Applications:

- Test Equipment
- Lab Use

Maximum Ratings:

- +36dBm (4 Watts)
- Operating Temperature: -40°C to 85°C
- Storage Temperature: -45°C to 90°C
- 50 VDC

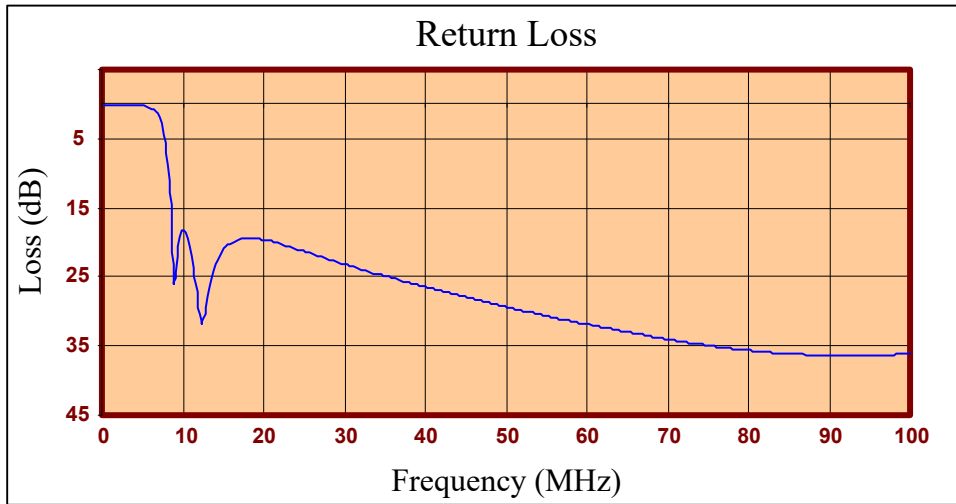
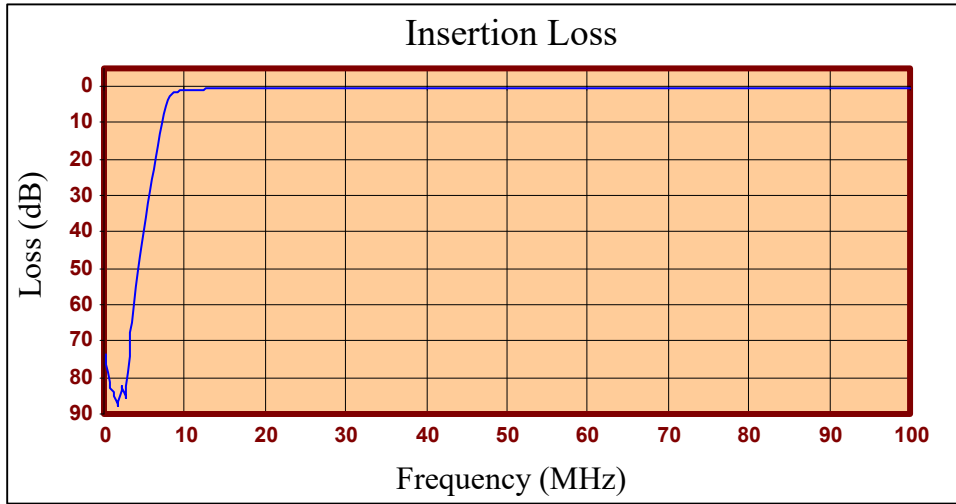


Crystek's new line of BNC High Pass Filters are designed in a rugged BNC housing. This filter line has excellent out-of-band rejection.

Designed for Test Equipment and General Lab Use.

Rev B

Page 1 of 3





FREQ (MHz)	INSERTION LOSS (dB)	RETURN LOSS (dB)
0.300	73.61	0.04
0.799	82.66	0.04
1.297	83.85	0.03
1.796	87.70	0.03
2.294	82.19	0.04
2.793	84.86	0.05
3.291	70.23	0.07
3.790	59.76	0.10
4.288	50.83	0.15
4.787	42.99	0.21
5.285	35.84	0.29
5.784	29.12	0.41
6.282	22.67	0.62
6.781	16.42	1.02
7.279	10.47	1.97
7.778	5.50	4.61
8.276	2.61	11.19
8.775	1.61	25.82
9.273	1.31	20.53
9.772	1.17	18.14
10.270	1.05	18.65
10.769	0.95	20.61
11.267	0.87	23.77
12.264	0.75	31.88
12.763	0.71	29.46
13.261	0.67	26.19
14.258	0.63	22.47
14.757	0.61	21.43
19.243	0.50	19.51
26.222	0.40	21.75
35.195	0.33	24.96
40.180	0.31	26.55
45.165	0.29	28.02
56.132	0.27	30.94
65.105	0.26	33.04
75.075	0.25	34.95
91.027	0.24	36.36
100.000	0.24	36.14

Product Control:

Crystek Part Number:	CHPFL-0010-BNC	Release Date:	25-Jul-2017
Revision Level:	B	Responsible:	K. Piotrowicz

Rev B
Page 3 of 3

X-ON Electronics

Largest Supplier of Electrical and Electronic Components

Click to view similar products for [Signal Conditioning](#) category:

Click to view products by [Crystek](#) manufacturer:

Other Similar products are found below :

[MAPDCC0001](#) [MAPDCC0004](#) [PD0409J5050S2HF](#) [880157](#) [HHS-109-PIN](#) [DC1417J5005AHF](#) [AFS14A30-2185.00-T3](#) [AFS14A35-1591.50-T3](#) [DS-323-PIN](#) [B39321R801H210](#) [1A0220-3](#) [JP510S](#) [LFB212G45SG8C341](#) [LFB322G45SN1A504](#) [LFL182G45TC3B746](#) [SF2159E](#) [30057](#) [FM-104-PIN](#) [CER0813B](#) [MAPDCC0005](#) [3A325](#) [40287](#) [41180](#) [ATB3225-75032NCT](#) [BD0810N50100AHF](#) [BD2425J50200AHF](#) [C5060J5003AHF](#) [JHS-115-PIN](#) [JP503AS](#) [DC0710J5005AHF](#) [DC2327J5005AHF](#) [DC3338J5005AHF](#) [43020](#) [LFB2H2G60BB1C106](#) [LFL15869MTC1B787](#) [X3C19F1-20S](#) [XC3500P-20S](#) [10013-20](#) [SF2194E](#) [CDBLB455KCAX39-B0](#) [TGL2208-SM, EVAL](#) [RF1353C](#) [PD0922J5050D2HF](#) [1E1305-3](#) [1F1304-3S](#) [1G1304-30](#) [B0922J7575AHF](#) [2020-6622-20](#) [TP-103-PIN](#) [BD1222J50200AHF](#)