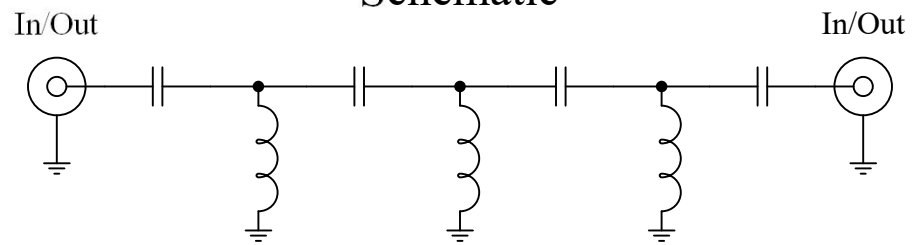




### Schematic



### Features:

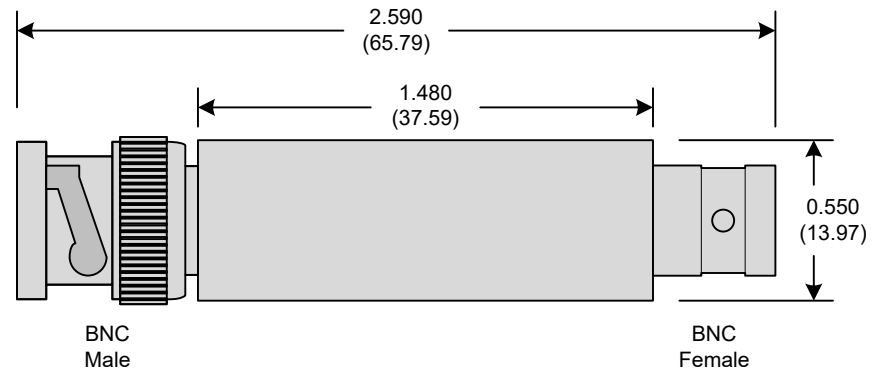
- 7<sup>th</sup> Order Chebyshev Response
- 50Ω BNC Connectors

### Applications:

- Test Equipment
- Lab Use

### Maximum Ratings:

- +36dBm (4 Watts)
- Operating Temperature: -40°C to 85°C
- Storage Temperature: -45°C to 90°C
- 50 VDC

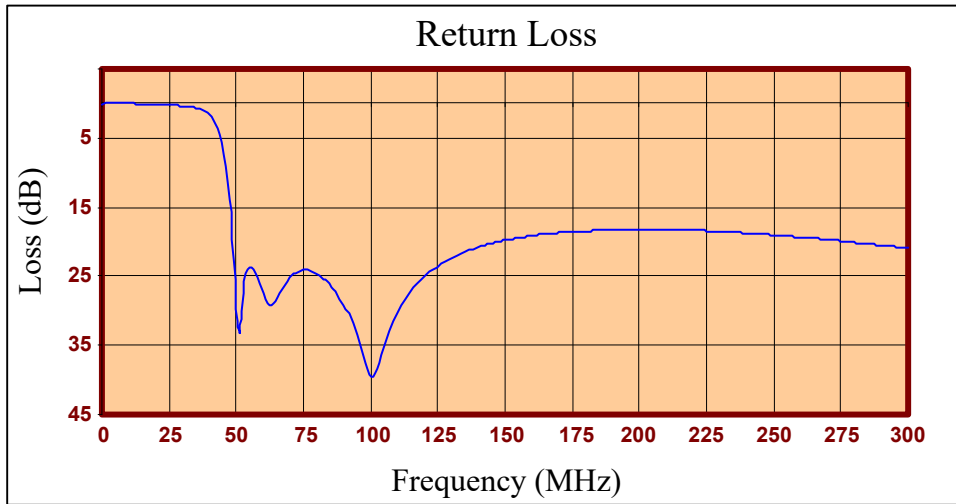
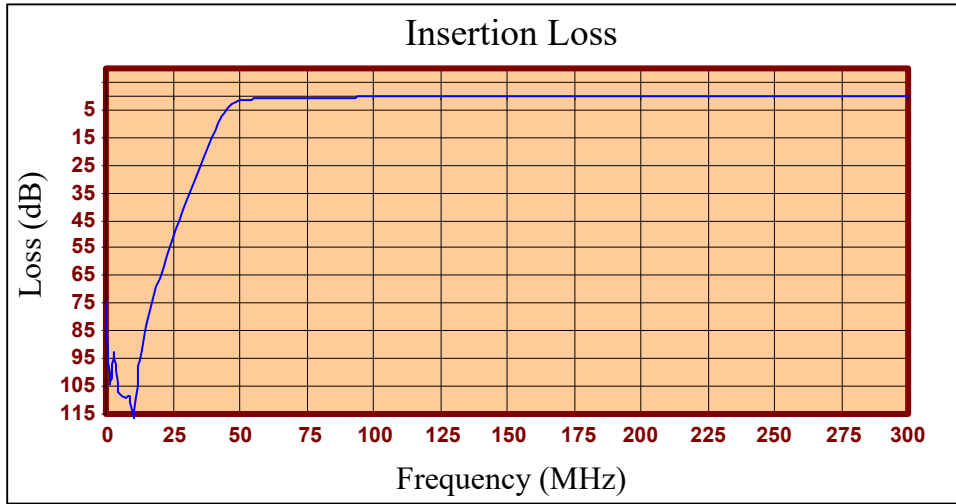


Crystek's new line of BNC High Pass Filters are designed in a rugged BNC housing. This filter line has excellent out-of-band rejection.

Designed for Test Equipment and General Lab Use.

Rev B

Page 1 of 3





| FREQ (MHz) | INSERTION LOSS (dB) | RETURN LOSS (dB) |
|------------|---------------------|------------------|
| 0.300      | 74.43               | 0.04             |
| 1.799      | 103.96              | 0.01             |
| 3.297      | 92.76               | 0.00             |
| 4.796      | 106.98              | 0.00             |
| 6.294      | 108.49              | 0.01             |
| 7.793      | 108.95              | 0.01             |
| 9.291      | 108.49              | 0.02             |
| 10.790     | 116.15              | 0.02             |
| 12.288     | 100.72              | 0.03             |
| 13.787     | 92.24               | 0.05             |
| 15.285     | 83.39               | 0.06             |
| 16.784     | 77.57               | 0.07             |
| 18.282     | 71.86               | 0.09             |
| 21.279     | 61.63               | 0.14             |
| 22.778     | 57.02               | 0.17             |
| 24.276     | 52.62               | 0.20             |
| 25.775     | 48.42               | 0.24             |
| 27.273     | 44.40               | 0.29             |
| 28.772     | 40.50               | 0.34             |
| 30.270     | 36.71               | 0.41             |
| 31.769     | 33.01               | 0.48             |
| 33.267     | 29.38               | 0.58             |
| 36.264     | 22.28               | 0.87             |
| 37.763     | 18.79               | 1.10             |
| 39.261     | 15.35               | 1.45             |
| 42.258     | 8.91                | 2.96             |
| 43.757     | 6.23                | 4.60             |
| 57.243     | 1.05                | 24.62            |
| 63.237     | 0.83                | 29.25            |
| 78.222     | 0.56                | 24.29            |
| 100.700    | 0.37                | 39.49            |
| 105.195    | 0.35                | 34.52            |
| 120.180    | 0.30                | 24.94            |
| 135.165    | 0.28                | 21.49            |
| 168.132    | 0.26                | 18.81            |
| 225.075    | 0.22                | 18.43            |
| 273.027    | 0.18                | 19.85            |
| 300.000    | 0.17                | 20.92            |

**Product Control:**

|                      |                |               |               |
|----------------------|----------------|---------------|---------------|
| Crystek Part Number: | CHPFL-0050-BNC | Release Date: | 25-Jul-2017   |
| Revision Level:      | B              | Responsible:  | K. Piotrowicz |

|             |
|-------------|
| Rev B       |
| Page 3 of 3 |

## X-ON Electronics

Largest Supplier of Electrical and Electronic Components

*Click to view similar products for [Signal Conditioning](#) category:*

*Click to view products by [Crystek](#) manufacturer:*

Other Similar products are found below :

[MAPDCC0001](#) [MAPDCC0004](#) [PD0409J5050S2HF](#) [880157](#) [HHS-109-PIN](#) [DC1417J5005AHF](#) [AFS14A30-2185.00-T3](#) [AFS14A35-1591.50-T3](#) [DS-323-PIN](#) [B39321R801H210](#) [1A0220-3](#) [JP510S](#) [LFB212G45SG8C341](#) [LFB322G45SN1A504](#) [LFL182G45TC3B746](#) [SF2159E](#) [30057](#)  
[FM-104-PIN](#) [CER0813B](#) [MAPDCC0005](#) [3A325](#) [40287](#) [41180](#) [ATB3225-75032NCT](#) [BD0810N50100AHF](#) [BD2425J50200AHF](#)  
[C5060J5003AHF](#) [JHS-115-PIN](#) [JP503AS](#) [DC0710J5005AHF](#) [DC2327J5005AHF](#) [DC3338J5005AHF](#) [43020](#) [LFB2H2G60BB1C106](#)  
[LFL15869MTC1B787](#) [X3C19F1-20S](#) [XC3500P-20S](#) [10013-20](#) [SF2194E](#) [CDBLB455KCAX39-B0](#) [TGL2208-SM, EVAL](#) [RF1353C](#)  
[PD0922J5050D2HF](#) [1E1305-3](#) [1F1304-3S](#) [1G1304-30](#) [B0922J7575AHF](#) [2020-6622-20](#) [TP-103-PIN](#) [BD1222J50200AHF](#)