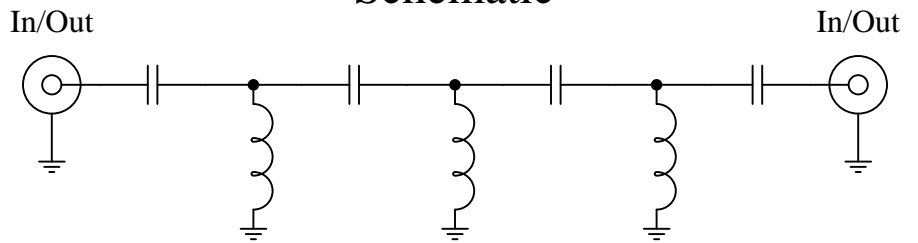




Schematic



Features:

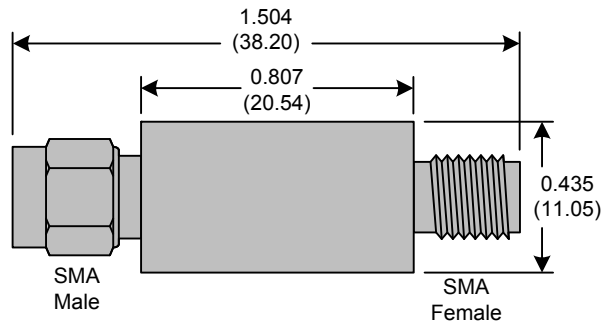
- 7th Order Butterworth Response
- 50Ω SMA Connectors

Applications:

- Test Equipment
- Lab Use

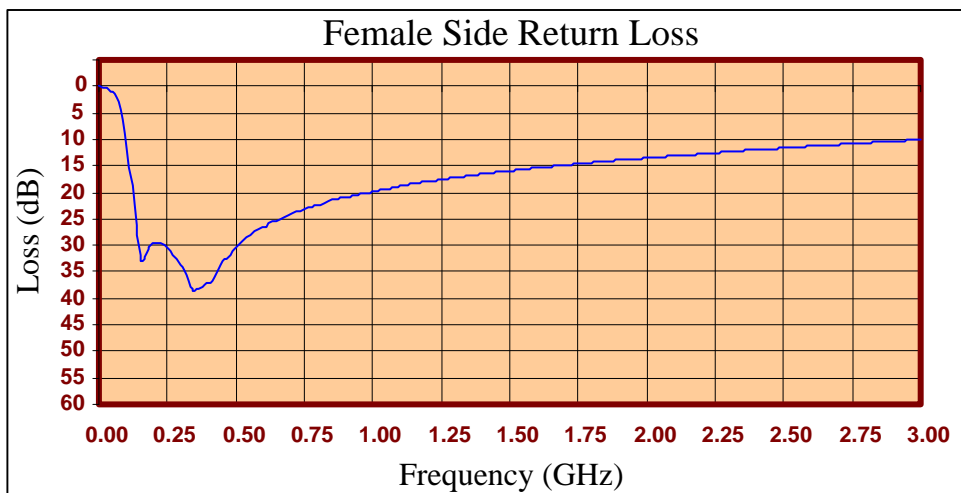
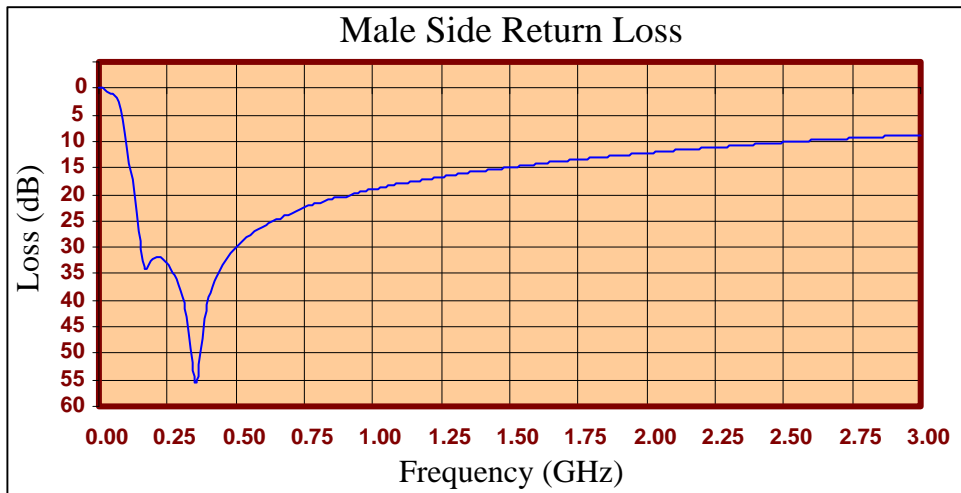
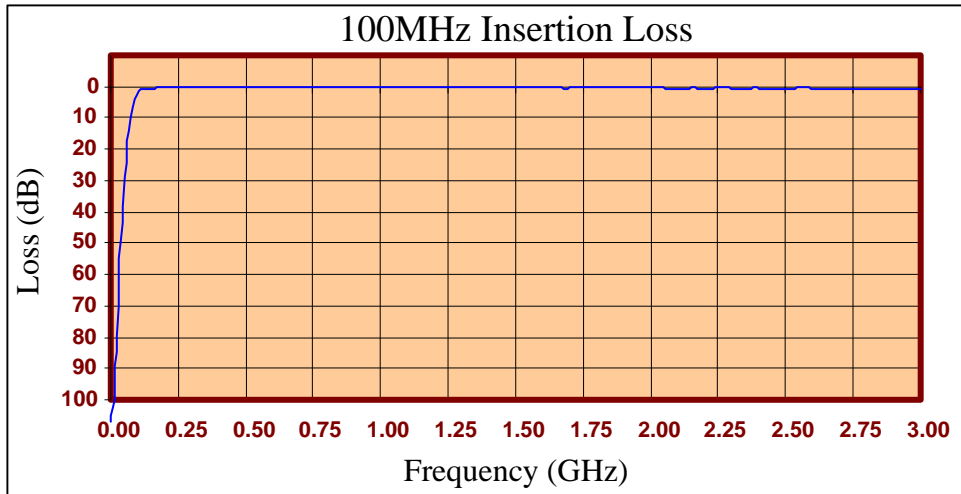
Maximum Ratings:

- +36dBm (4 Watts)
- Operating Temperature: -40°C to 85°C
- Storage Temperature: -55°C to 100°C



Crystek's line of High Pass Filters are designed in a rugged SMA housing. This filter line has excellent out-of-band rejection. Designed for Test Equipment and General Lab Use.

Rev D
Page 1 of 3





FREQ (MHz)	INSERTION LOSS (dB)	Male Return Loss (dB)	Female Return Loss (dB)
0.3	103.66	0.01	0.00
15.3	97.16	0.06	0.10
30.3	62.05	0.45	0.39
45.3	38.12	0.86	0.86
60.3	20.78	1.48	1.45
75.3	9.68	2.66	2.70
90.3	3.93	5.81	6.11
105	1.72	11.12	11.80
120	1.03	17.22	18.75
135	0.73	23.72	26.13
150	0.60	30.48	32.89
165	0.54	33.98	32.51
180	0.44	33.29	30.42
195	0.41	32.04	29.40
210	0.40	31.73	29.52
225	0.31	31.75	29.49
240	0.32	32.42	29.97
255	0.29	33.43	30.54
270	0.29	34.65	31.71
285	0.26	36.10	32.50
300	0.24	38.39	33.80
330	0.24	46.09	36.57
405	0.21	38.50	36.95
450	0.17	33.40	33.10
510	0.23	29.49	29.88
585	0.18	26.66	26.78
705	0.16	23.39	23.94
810	0.18	21.51	22.26
900	0.23	20.38	20.91
1005	0.25	19.03	19.76
1245	0.25	16.75	17.64
1500	0.42	14.96	15.92
1755	0.23	13.43	14.60
1995	0.48	12.26	13.59
2250	0.49	11.13	12.55
2505	0.70	10.16	11.64
2745	0.89	9.43	10.83
3000	0.94	8.80	10.05

Product Control:

Crystek Part Number:	CHPFL-0100	Release Date:	18-Aug-2015
Revision Level:	D	Responsible:	K. Piotrowicz

Rev D
Page 3 of 3



X-ON Electronics

Largest Supplier of Electrical and Electronic Components

Click to view similar products for [Signal Conditioning](#) category:

Click to view products by [Crystek](#) manufacturer:

Other Similar products are found below :

[MAPDCC0001](#) [MAPDCC0004](#) [PD0409J5050S2HF](#) [880157](#) [HHS-109-PIN](#) [DC1417J5005AHF](#) [AFS14A30-2185.00-T3](#) [AFS14A35-1591.50-T3](#) [DS-323-PIN](#) [B39321R801H210](#) [1A0220-3](#) [JP510S](#) [LFB212G45SG8C341](#) [LFB322G45SN1A504](#) [LFL182G45TC3B746](#) [SF2159E](#) [30057](#)
[FM-104-PIN](#) [CER0813B](#) [MAPDCC0005](#) [3A325](#) [40287](#) [41180](#) [ATB3225-75032NCT](#) [BD0810N50100AHF](#) [BD2425J50200AHF](#)
[C5060J5003AHF](#) [JHS-115-PIN](#) [JP503AS](#) [DC0710J5005AHF](#) [DC2327J5005AHF](#) [DC3338J5005AHF](#) [43020](#) [LFB2H2G60BB1C106](#)
[LFL15869MTC1B787](#) [X3C19F1-20S](#) [XC3500P-20S](#) [10013-20](#) [SF2194E](#) [CDBLB455KCAX39-B0](#) [TGL2208-SM, EVAL](#) [RF1353C](#)
[PD0922J5050D2HF](#) [1E1305-3](#) [1F1304-3S](#) [1G1304-30](#) [B0922J7575AHF](#) [2020-6622-20](#) [TP-103-PIN](#) [BD1222J50200AHF](#)