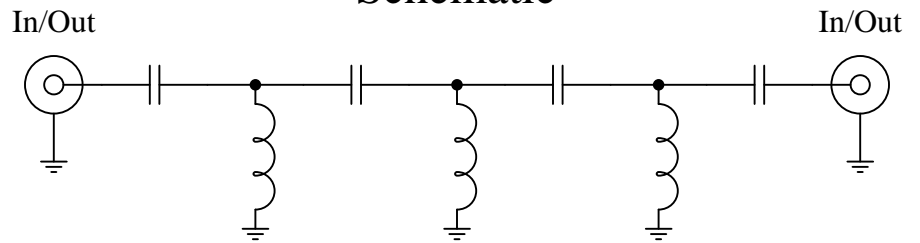




### Schematic



### Features:

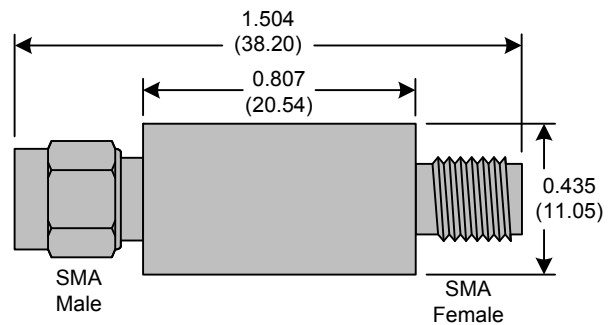
- 7<sup>th</sup> Order Butterworth Response
- 50Ω SMA Connectors

### Applications:

- Test Equipment
- Lab Use

### Maximum Ratings:

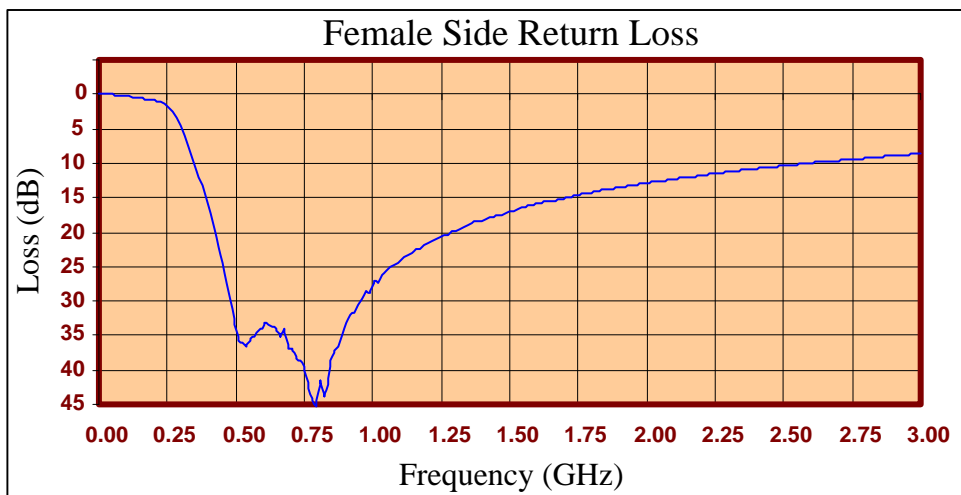
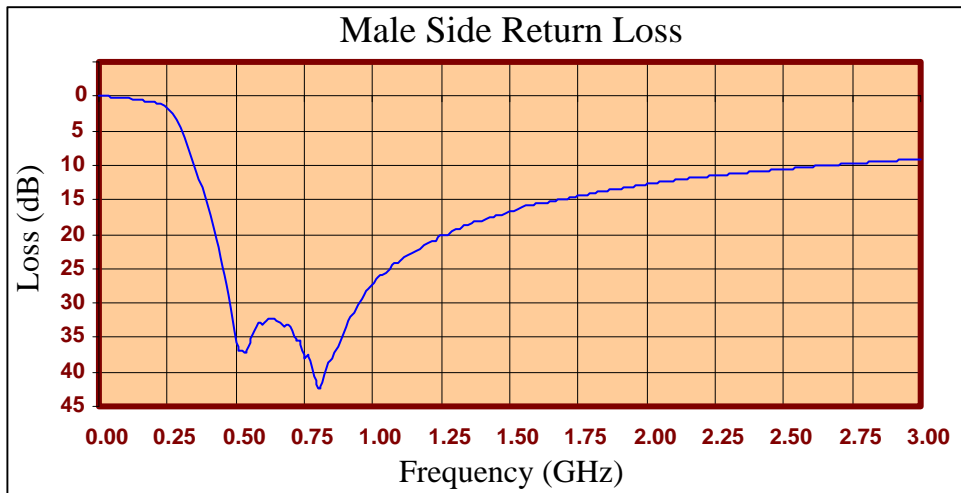
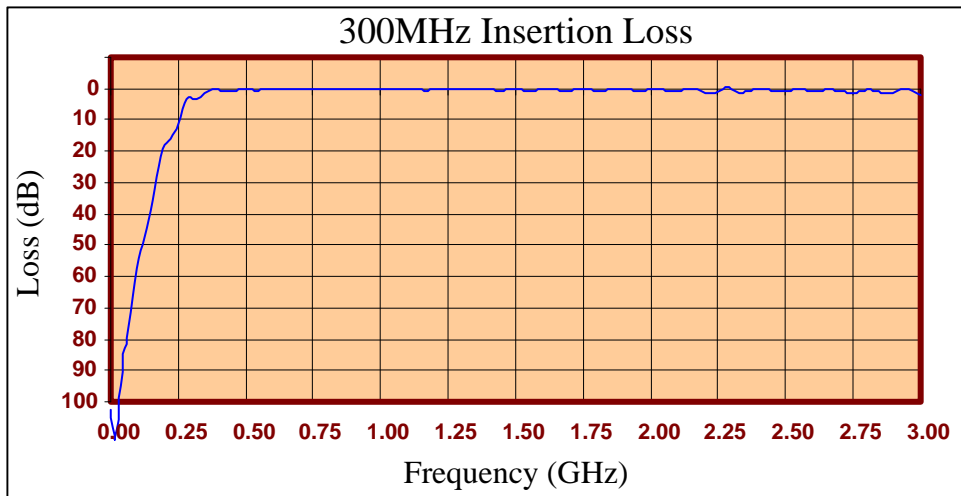
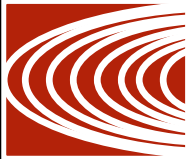
- +36dBm (4 Watts)
- Operating Temperature: -40°C to 85°C
- Storage Temperature: -55°C to 100°C



Crystek's line of High Pass Filters are designed in a rugged SMA housing. This filter line has excellent out-of-band rejection. Designed for Test Equipment and General Lab Use.

Rev D

Page 1 of 3



Rev D  
 Page 2 of 3





FREQ (MHz)	INSERTION LOSS (dB)	Male Return Loss (dB)	Female Return Loss (dB)
0.3	97.73	0.00	0.00
15.3	101.36	0.01	0.01
30.3	89.31	0.04	0.03
45.3	88.03	0.07	0.06
60.3	80.58	0.12	0.15
75.3	71.75	0.17	0.17
90.3	61.83	0.22	0.23
105	54.47	0.30	0.29
120	49.99	0.37	0.40
135	45.17	0.51	0.49
150	39.38	0.58	0.62
165	32.56	0.67	0.70
180	25.14	0.76	0.76
195	19.87	0.86	0.85
210	18.07	1.01	1.00
225	16.30	1.18	1.13
240	13.35	1.40	1.36
255	9.25	1.86	1.81
270	4.98	2.49	2.44
285	3.34	3.38	3.41
300	3.63	4.53	4.61
330	2.84	7.60	7.69
405	0.74	17.27	17.38
450	0.63	24.65	24.42
510	0.29	36.80	35.83
585	0.25	32.97	34.40
705	0.33	34.07	36.88
810	0.24	42.53	41.52
900	0.28	33.40	33.10
1005	0.28	27.04	26.94
1245	0.15	20.26	20.59
1500	0.05	16.67	16.97
1755	-0.06	14.44	14.63
1995	0.31	12.82	12.95
2250	0.71	11.49	11.51
2505	0.92	10.59	10.35
2745	1.49	9.79	9.44
3000	1.98	9.09	8.64

**Product Control:**

Crystek Part Number:	CHPFL-0300	Release Date:	18-Aug-2015
Revision Level:	D	Responsible:	K. Piotrowicz

Rev D
Page 3 of 3



## X-ON Electronics

Largest Supplier of Electrical and Electronic Components

*Click to view similar products for [Signal Conditioning](#) category:*

*Click to view products by [Crystek](#) manufacturer:*

Other Similar products are found below :

[MAPDCC0001](#) [MAPDCC0004](#) [PD0409J5050S2HF](#) [880157](#) [HHS-109-PIN](#) [DC1417J5005AHF](#) [AFS14A30-2185.00-T3](#) [AFS14A35-1591.50-T3](#) [DS-323-PIN](#) [B39321R801H210](#) [1A0220-3](#) [JP510S](#) [LFB212G45SG8C341](#) [LFB322G45SN1A504](#) [LFL182G45TC3B746](#) [SF2159E](#) [30057](#) [FM-104-PIN](#) [CER0813B](#) [MAPDCC0005](#) [3A325](#) [40287](#) [41180](#) [ATB3225-75032NCT](#) [BD0810N50100AHF](#) [BD2425J50200AHF](#) [C5060J5003AHF](#) [JHS-115-PIN](#) [JP503AS](#) [DC0710J5005AHF](#) [DC2327J5005AHF](#) [DC3338J5005AHF](#) [43020](#) [LFB2H2G60BB1C106](#) [LFL15869MTC1B787](#) [X3C19F1-20S](#) [XC3500P-20S](#) [10013-20](#) [SF2194E](#) [CDBLB455KCAX39-B0](#) [TGL2208-SM, EVAL](#) [RF1353C](#) [PD0922J5050D2HF](#) [1E1305-3](#) [1F1304-3S](#) [1G1304-30](#) [B0922J7575AHF](#) [2020-6622-20](#) [TP-103-PIN](#) [BD1222J50200AHF](#)