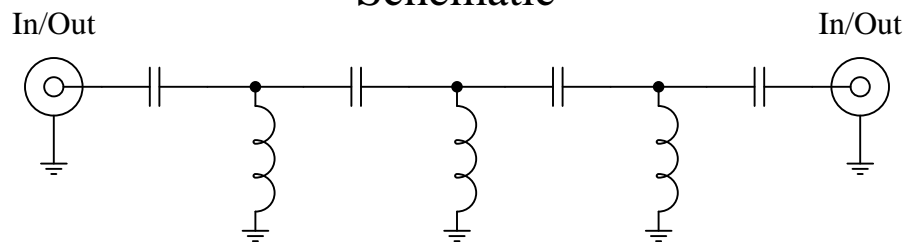


Part Number: CHPFL-1000



Schematic



Features:

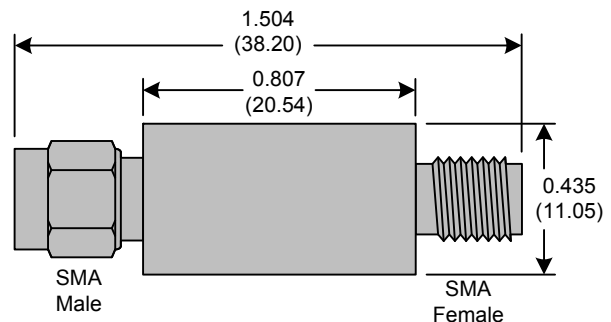
- 7th Order Butterworth Response
- 50Ω SMA Connectors

Applications:

- Test Equipment
- Lab Use

Maximum Ratings:

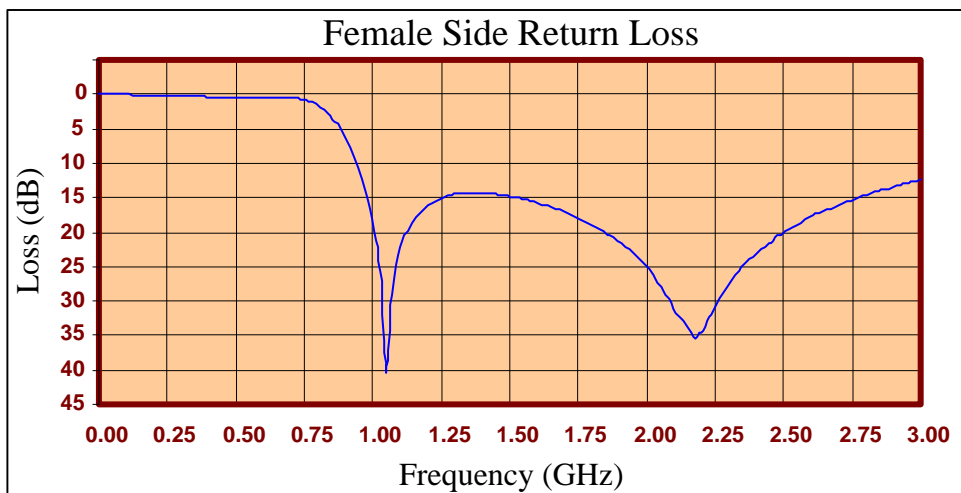
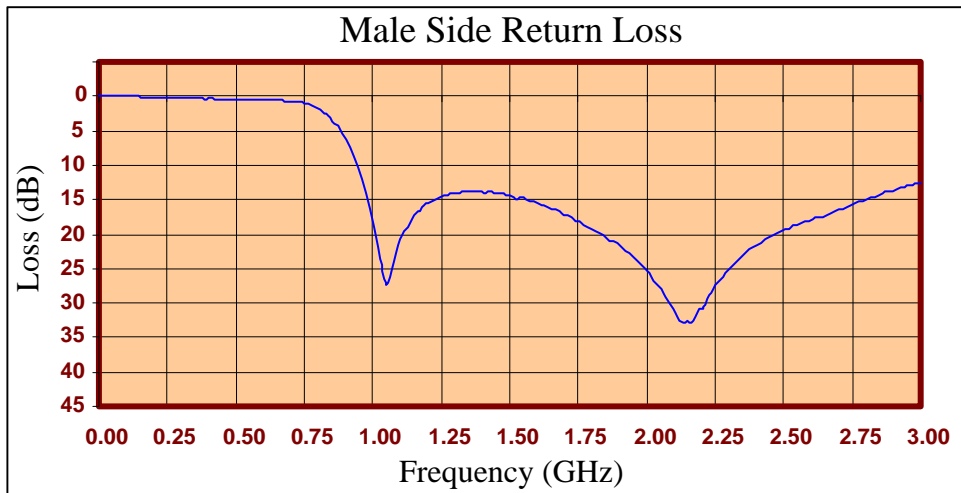
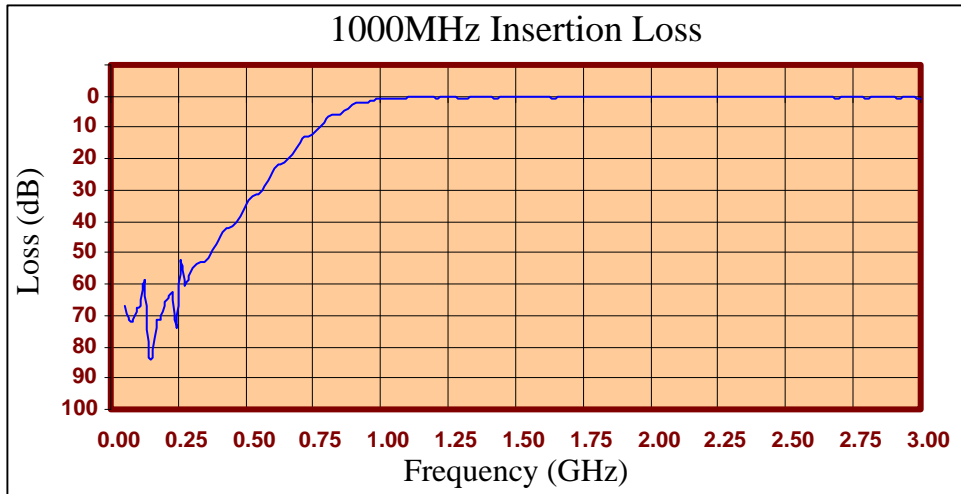
- +36dBm (4 Watts)
- Operating Temperature: -40°C to 85°C
- Storage Temperature: -55°C to 100°C



Crystek's line of High Pass Filters are designed in a rugged SMA housing. This filter line has excellent out-of-band rejection. Designed for Test Equipment and General Lab Use.

Rev E

Page 1 of 3





FREQ (MHz)	INSERTION LOSS (dB)	Male Return Loss (dB)	Female Return Loss (dB)
0.3	100.84	0.00	0.00
15.3	106.89	0.00	0.00
30.3	98.75	0.01	0.00
45.3	93.17	0.01	0.00
60.3	102.59	0.02	0.03
75.3	106.75	0.02	0.04
90.3	86.87	0.01	0.02
105	84.46	0.02	0.04
120	77.84	0.04	0.07
135	76.57	0.05	0.06
150	76.06	0.06	0.13
165	74.02	0.12	0.13
180	72.55	0.12	0.19
195	69.63	0.11	0.17
210	67.13	0.09	0.14
225	63.09	0.10	0.16
240	59.82	0.13	0.20
255	59.53	0.13	0.20
270	60.03	0.09	0.23
285	59.87	0.13	0.21
300	58.84	0.23	0.23
330	53.95	0.21	0.24
405	47.57	0.32	0.36
450	40.87	0.38	0.39
510	35.71	0.47	0.45
585	24.12	0.54	0.47
705	12.88	0.70	0.49
810	5.39	1.97	1.83
900	3.20	6.30	6.48
1005	0.91	18.97	19.86
1245	0.47	14.61	15.11
1500	0.49	14.38	14.85
1755	0.36	18.18	18.10
1995	0.23	25.08	24.88
2250	0.62	27.49	30.78
2505	0.49	19.39	19.90
2745	0.49	15.81	15.38
3000	0.55	12.58	12.36

Product Control:

Crystek Part Number:	CHPFL-1000	Release Date:	18-Aug-2015
Revision Level:	E	Responsible:	K. Piotrowicz

Rev E
Page 3 of 3



X-ON Electronics

Largest Supplier of Electrical and Electronic Components

Click to view similar products for [Signal Conditioning](#) category:

Click to view products by [Crystek](#) manufacturer:

Other Similar products are found below :

[MAPDCC0001](#) [MAPDCC0004](#) [PD0409J5050S2HF](#) [880157](#) [HHS-109-PIN](#) [DC1417J5005AHF](#) [AFS14A30-2185.00-T3](#) [AFS14A35-1591.50-T3](#) [DS-323-PIN](#) [B39321R801H210](#) [1A0220-3](#) [JP510S](#) [LFB212G45SG8C341](#) [LFB322G45SN1A504](#) [LFL182G45TC3B746](#) [SF2159E](#) [30057](#) [FM-104-PIN](#) [CER0813B](#) [MAPDCC0005](#) [3A325](#) [40287](#) [41180](#) [ATB3225-75032NCT](#) [BD0810N50100AHF](#) [BD2425J50200AHF](#) [C5060J5003AHF](#) [JHS-115-PIN](#) [JP503AS](#) [DC0710J5005AHF](#) [DC2327J5005AHF](#) [DC3338J5005AHF](#) [43020](#) [LFB2H2G60BB1C106](#) [LFL15869MTC1B787](#) [X3C19F1-20S](#) [XC3500P-20S](#) [10013-20](#) [SF2194E](#) [CDBLB455KCAX39-B0](#) [TGL2208-SM, EVAL](#) [RF1353C](#) [PD0922J5050D2HF](#) [1E1305-3](#) [1F1304-3S](#) [1G1304-30](#) [B0922J7575AHF](#) [2020-6622-20](#) [TP-103-PIN](#) [BD1222J50200AHF](#)