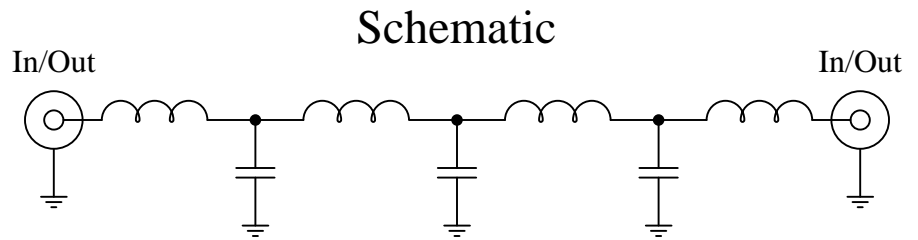


Part Number: CLPFL-0050

Low Pass Range  
DC to 50 MHz



### Features:

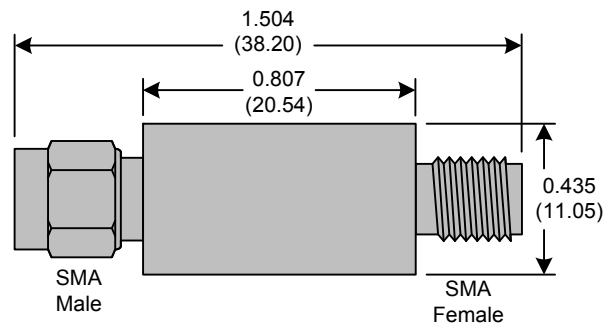
- 7<sup>th</sup> Order Chebyshev Response
- 50Ω SMA Connectors

### Applications:

- Test Equipment
- Lab Use

### Maximum Ratings:

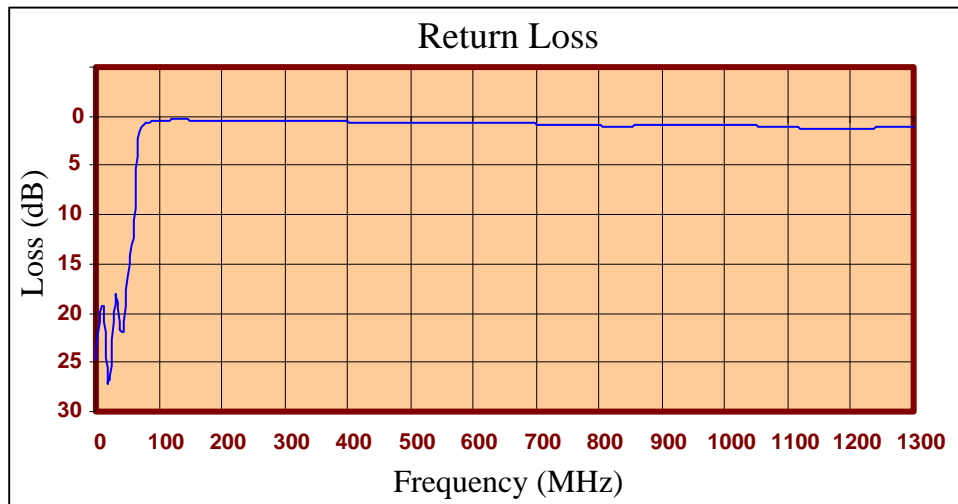
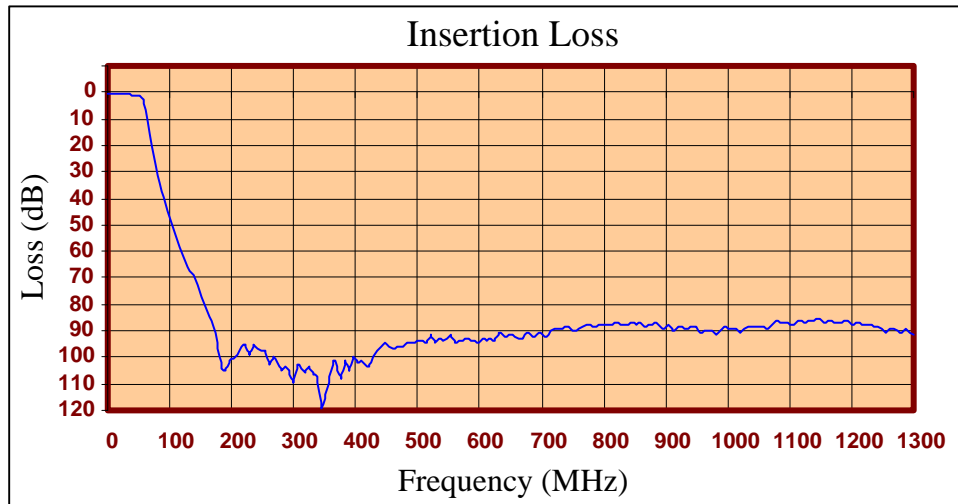
- +36dBm (4 Watts)
- Operating Temperature: -40°C to 85°C
- Storage Temperature: -55°C to 100°C



Crystek's new line of Low Pass Filters are designed in a rugged SMA housing. This filter line has excellent out-of-band rejection. Designed for Test Equipment and General Lab Use.

Rev C

Page 1 of 3





FREQ (MHz)	INSERTION LOSS (dB)	RETURN LOSS (dB)
0.300	0.43	24.72
6.799	0.48	19.93
13.297	0.52	19.22
19.796	0.56	27.01
26.294	0.68	24.33
32.793	0.85	17.98
39.291	0.95	21.70
45.790	1.17	21.96
52.288	1.62	16.17
58.787	3.04	11.53
65.285	11.05	2.20
71.784	20.19	1.04
78.282	27.80	0.73
84.781	34.28	0.58
91.279	39.95	0.50
97.778	45.04	0.44
104.276	49.70	0.41
110.775	54.03	0.38
117.273	58.08	0.37
123.772	61.97	0.36
130.270	65.65	0.35
136.769	69.27	0.35
143.267	72.93	0.36
156.264	80.68	0.37
162.763	84.71	0.38
169.261	88.80	0.39
182.258	104.20	0.42
214.751	96.17	0.48
260.240	102.89	0.52
344.721	119.61	0.51
474.691	95.96	0.65
520.180	91.54	0.66
585.165	93.78	0.71
728.132	89.28	0.80
845.105	87.30	0.98
975.075	90.09	0.91
1183.027	86.98	1.32
1300.000	91.39	1.03

**Product Control:**

Crystek Part Number:	CLPFL-0050	Release Date:	01-Jun-2015
Revision Level:	C	Responsible:	K. Piotrowicz

Rev C
Page 3 of 3



## X-ON Electronics

Largest Supplier of Electrical and Electronic Components

*Click to view similar products for [Signal Conditioning](#) category:*

*Click to view products by [Crystek](#) manufacturer:*

Other Similar products are found below :

[MAPDCC0001](#) [MAPDCC0004](#) [PD0409J5050S2HF](#) [880157](#) [HHS-109-PIN](#) [DC1417J5005AHF](#) [AFS14A30-2185.00-T3](#) [AFS14A35-1591.50-T3](#) [DS-323-PIN](#) [B39321R801H210](#) [1A0220-3](#) [JP510S](#) [LFB212G45SG8C341](#) [LFB322G45SN1A504](#) [LFL182G45TC3B746](#) [SF2159E](#) [30057](#)  
[FM-104-PIN](#) [CER0813B](#) [MAPDCC0005](#) [3A325](#) [40287](#) [41180](#) [ATB3225-75032NCT](#) [BD0810N50100AHF](#) [BD2425J50200AHF](#)  
[C5060J5003AHF](#) [JHS-115-PIN](#) [JP503AS](#) [DC0710J5005AHF](#) [DC2327J5005AHF](#) [DC3338J5005AHF](#) [43020](#) [LFB2H2G60BB1C106](#)  
[LFL15869MTC1B787](#) [X3C19F1-20S](#) [XC3500P-20S](#) [10013-20](#) [SF2194E](#) [CDBLB455KCAX39-B0](#) [TGL2208-SM, EVAL](#) [RF1353C](#)  
[PD0922J5050D2HF](#) [1E1305-3](#) [1F1304-3S](#) [1G1304-30](#) [B0922J7575AHF](#) [2020-6622-20](#) [TP-103-PIN](#) [BD1222J50200AHF](#)