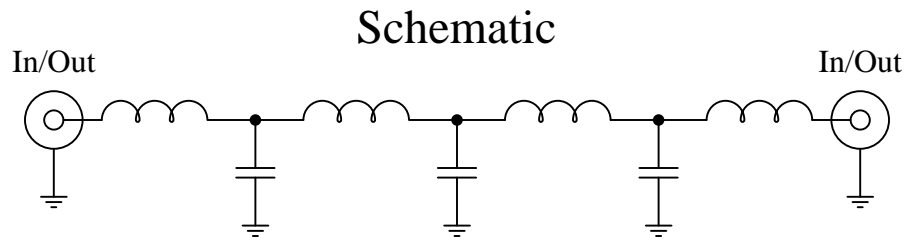


Part Number: CLPFL-0100

Low Pass Range
DC to 100 MHz



Features:

- 7th Order Butterworth Response
- 50Ω SMA Connectors

Applications:

- Test Equipment
- Lab Use

Maximum Ratings:

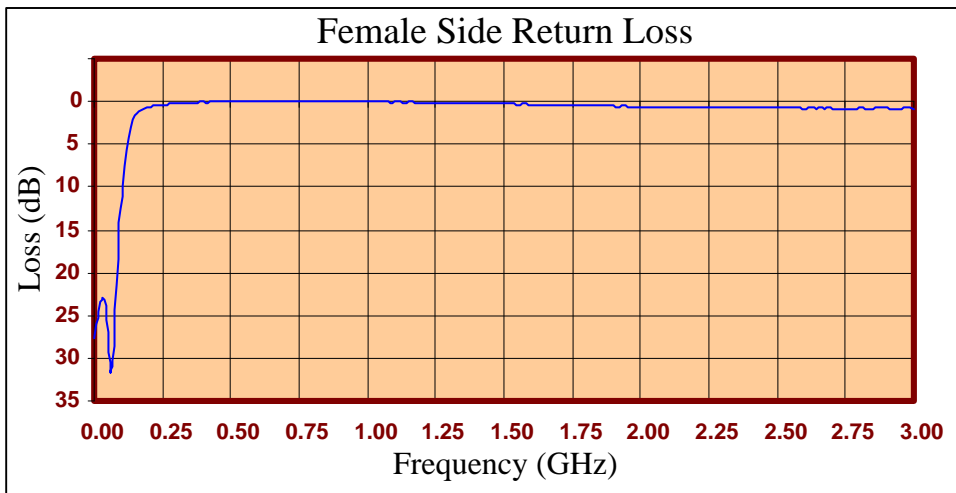
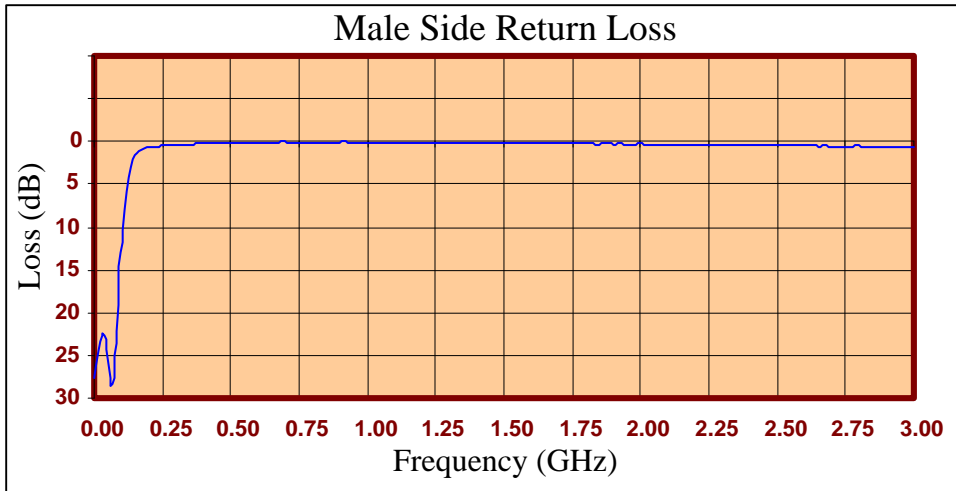
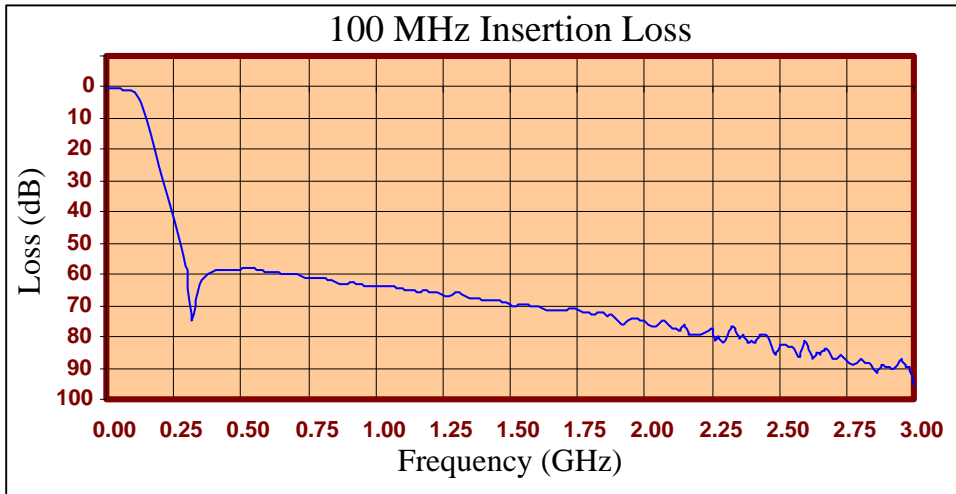
- +36dBm (4 Watts)
- Operating Temperature: -40°C to 85°C
- Storage Temperature: -55°C to 100°C



Crystek's new line of Low Pass Filters are designed in a rugged SMA housing. This filter line has excellent out-of-band rejection. Designed for Test Equipment and General Lab Use.

Rev C

Page 1 of 3





FREQ (MHz)	INSERTION LOSS (dB)	Male Return Loss (dB)	Female Return Loss (dB)
0.3	0.36	27.49	27.60
15.3	0.38	24.09	24.61
30.3	0.55	22.12	22.83
45.3	0.63	23.10	23.90
60.3	0.70	31.08	31.60
75.3	0.87	25.00	26.74
90.3	1.15	15.01	16.14
105	1.79	9.19	10.03
120	3.35	5.09	5.63
135	6.37	2.69	2.93
150	10.66	1.61	1.55
165	15.42	1.05	1.06
180	20.56	0.87	0.82
195	25.69	0.75	0.70
210	30.43	0.70	0.60
225	35.08	0.65	0.53
240	39.63	0.62	0.46
255	44.39	0.52	0.36
270	49.42	0.50	0.34
285	55.12	0.47	0.28
300	62.70	0.42	0.22
330	67.11	0.37	0.16
405	58.41	0.24	0.11
450	58.30	0.20	0.02
510	57.82	0.15	-0.09
585	58.94	0.13	-0.06
705	60.15	0.10	-0.05
810	61.14	0.09	-0.10
900	62.91	0.06	-0.03
1005	63.65	0.09	-0.02
1245	66.39	0.13	0.17
1500	69.25	0.17	0.32
1755	72.00	0.27	0.48
1995	74.54	0.30	0.57
2250	80.37	0.42	0.71
2505	82.09	0.49	0.78
2745	86.91	0.58	0.81
3000	94.96	0.64	0.81

Product Control:

Crystek Part Number:	CLPFL-0100	Release Date:	03-Aug-2015
Revision Level:	C	Responsible:	K. Piotrowicz

Rev C
Page 3 of 3



X-ON Electronics

Largest Supplier of Electrical and Electronic Components

Click to view similar products for [Signal Conditioning](#) category:

Click to view products by [Crystek](#) manufacturer:

Other Similar products are found below :

[MAPDCC0001](#) [MAPDCC0004](#) [PD0409J5050S2HF](#) [880157](#) [HHS-109-PIN](#) [DC1417J5005AHF](#) [AFS14A30-2185.00-T3](#) [AFS14A35-1591.50-T3](#) [DS-323-PIN](#) [B39321R801H210](#) [1A0220-3](#) [JP510S](#) [LFB212G45SG8C341](#) [LFB322G45SN1A504](#) [LFL182G45TC3B746](#) [SF2159E](#) [30057](#)
[FM-104-PIN](#) [CER0813B](#) [MAPDCC0005](#) [3A325](#) [40287](#) [41180](#) [ATB3225-75032NCT](#) [BD0810N50100AHF](#) [BD2425J50200AHF](#)
[C5060J5003AHF](#) [JHS-115-PIN](#) [JP503AS](#) [DC0710J5005AHF](#) [DC2327J5005AHF](#) [DC3338J5005AHF](#) [43020](#) [LFB2H2G60BB1C106](#)
[LFL15869MTC1B787](#) [X3C19F1-20S](#) [XC3500P-20S](#) [10013-20](#) [SF2194E](#) [CDBLB455KCAX39-B0](#) [TGL2208-SM, EVAL](#) [RF1353C](#)
[PD0922J5050D2HF](#) [1E1305-3](#) [1F1304-3S](#) [1G1304-30](#) [B0922J7575AHF](#) [2020-6622-20](#) [TP-103-PIN](#) [BD1222J50200AHF](#)