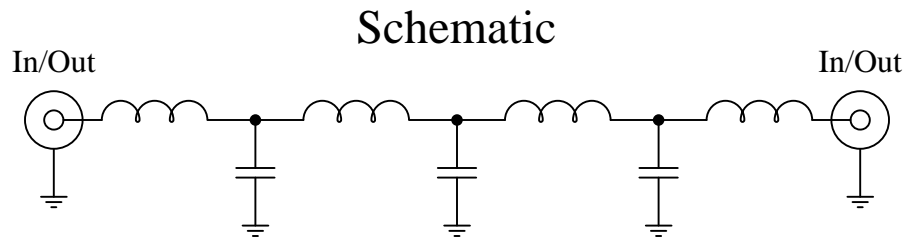


Part Number: CLPFL-0200

Low Pass Range
DC to 200 MHz



Features:

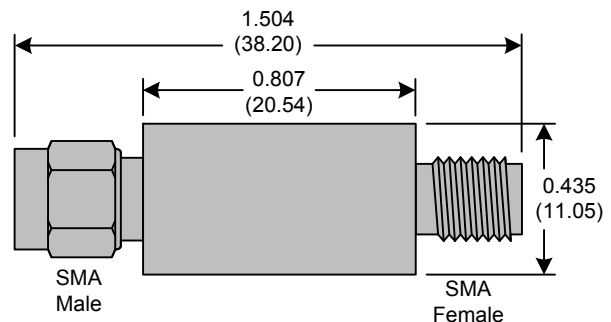
- 7th Order Butterworth Response
- 50Ω SMA Connectors

Applications:

- Test Equipment
- Lab Use

Maximum Ratings:

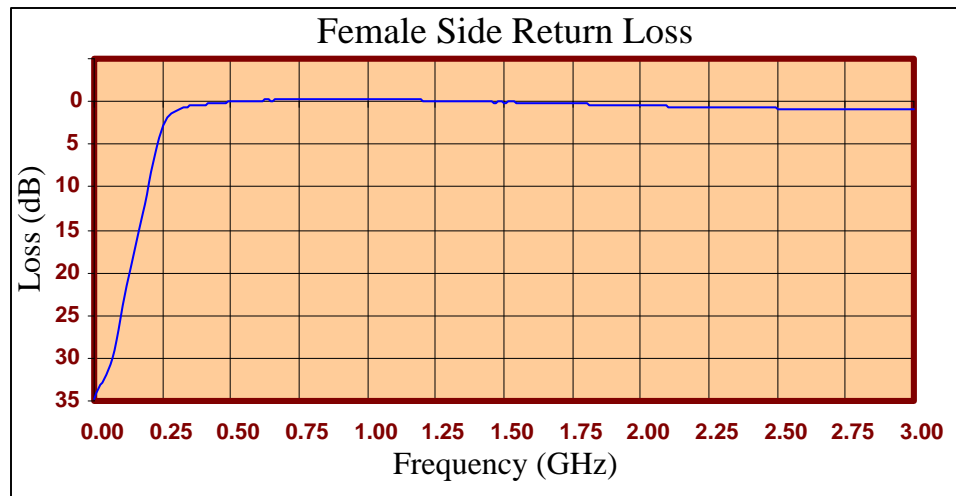
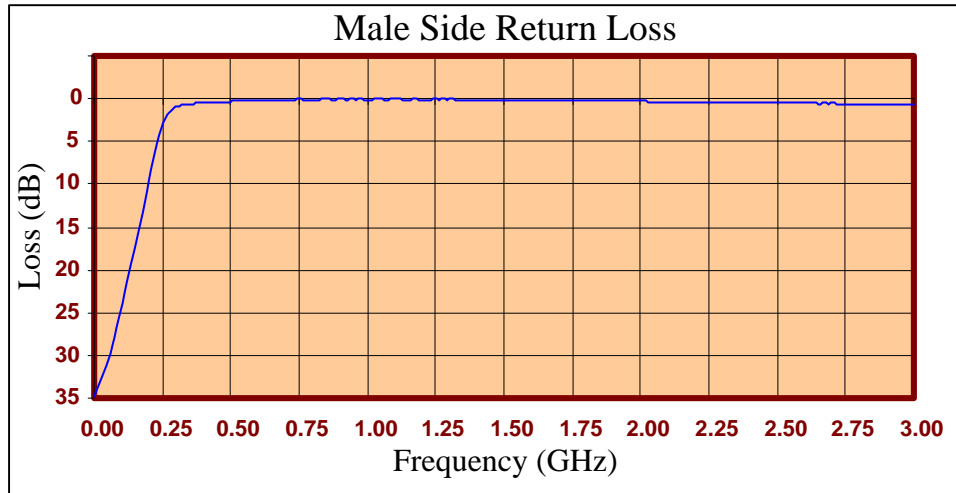
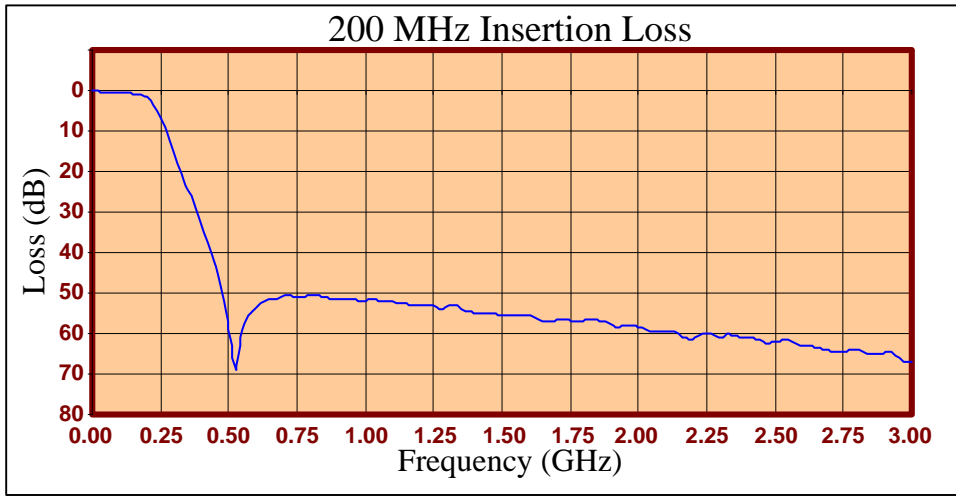
- +36dBm (4 Watts)
- Operating Temperature: -40°C to 85°C
- Storage Temperature: -55°C to 100°C



Crystek's new line of Low Pass Filters are designed in a rugged SMA housing. This filter line has excellent out-of-band rejection. Designed for Test Equipment and General Lab Use.

Rev D

Page 1 of 3





FREQ (MHz)	INSERTION LOSS (dB)	Male Return Loss (dB)	Female Return Loss (dB)
0.3	0.17	34.76	34.73
15.3	0.18	33.64	33.68
30.3	0.29	32.51	32.76
45.3	0.31	31.32	31.93
60.3	0.33	29.88	30.73
75.3	0.40	27.89	28.98
90.3	0.43	25.88	26.64
105	0.52	23.79	23.99
120	0.58	21.51	21.55
135	0.65	19.49	19.42
150	0.79	17.42	17.27
165	0.96	15.37	15.18
180	1.24	13.16	12.98
195	1.64	10.77	10.76
210	2.20	8.36	8.32
225	3.34	6.07	6.15
240	4.84	4.20	4.21
255	6.81	2.78	2.85
270	9.22	1.83	1.97
285	11.99	1.30	1.38
300	15.02	0.97	1.10
330	20.69	0.71	0.72
405	35.02	0.48	0.37
450	43.65	0.38	0.22
510	64.73	0.31	0.03
585	54.39	0.26	-0.08
705	50.72	0.14	-0.18
810	50.43	0.13	-0.24
900	51.74	0.08	-0.23
1005	51.95	0.10	-0.21
1245	53.22	0.08	-0.07
1500	55.48	0.13	0.12
1755	56.84	0.25	0.31
1995	58.36	0.28	0.46
2250	59.91	0.41	0.65
2505	62.19	0.49	0.81
2745	64.49	0.61	0.90
3000	67.04	0.67	1.01

Product Control:

Crystek Part Number:	CLPFL-0200	Release Date:	03-Aug-2015
Revision Level:	D	Responsible:	K. Piotrowicz

Rev D
Page 3 of 3



X-ON Electronics

Largest Supplier of Electrical and Electronic Components

Click to view similar products for [Signal Conditioning](#) category:

Click to view products by [Crystek](#) manufacturer:

Other Similar products are found below :

[MAPDCC0001](#) [MAPDCC0004](#) [PD0409J5050S2HF](#) [880157](#) [HHS-109-PIN](#) [DC1417J5005AHF](#) [AFS14A30-2185.00-T3](#) [AFS14A35-1591.50-T3](#) [DS-323-PIN](#) [B39321R801H210](#) [1A0220-3](#) [JP510S](#) [LFB212G45SG8C341](#) [LFB322G45SN1A504](#) [LFL182G45TC3B746](#) [SF2159E](#) [30057](#)
[FM-104-PIN](#) [CER0813B](#) [MAPDCC0005](#) [3A325](#) [40287](#) [41180](#) [ATB3225-75032NCT](#) [BD0810N50100AHF](#) [BD2425J50200AHF](#)
[C5060J5003AHF](#) [JHS-115-PIN](#) [JP503AS](#) [DC0710J5005AHF](#) [DC2327J5005AHF](#) [DC3338J5005AHF](#) [43020](#) [LFB2H2G60BB1C106](#)
[LFL15869MTC1B787](#) [X3C19F1-20S](#) [XC3500P-20S](#) [10013-20](#) [SF2194E](#) [CDBLB455KCAX39-B0](#) [TGL2208-SM, EVAL](#) [RF1353C](#)
[PD0922J5050D2HF](#) [1E1305-3](#) [1F1304-3S](#) [1G1304-30](#) [B0922J7575AHF](#) [2020-6622-20](#) [TP-103-PIN](#) [BD1222J50200AHF](#)