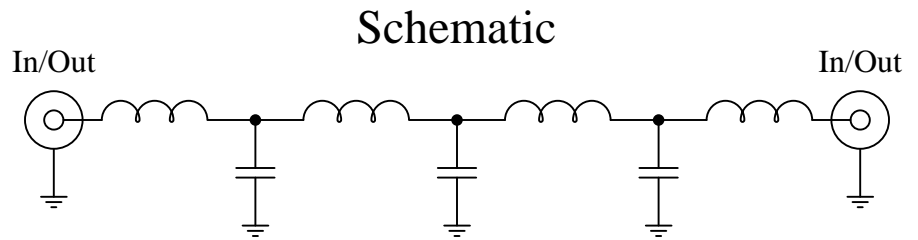


Part Number: CLPFL-0300

Low Pass Range  
DC to 300 MHz



### Features:

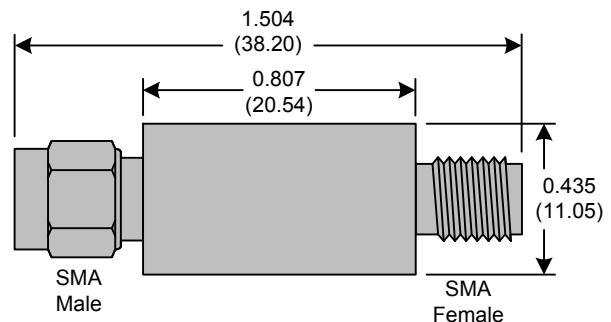
- 7<sup>th</sup> Order Butterworth Response
- 50Ω SMA Connectors

### Applications:

- Test Equipment
- Lab Use

### Maximum Ratings:

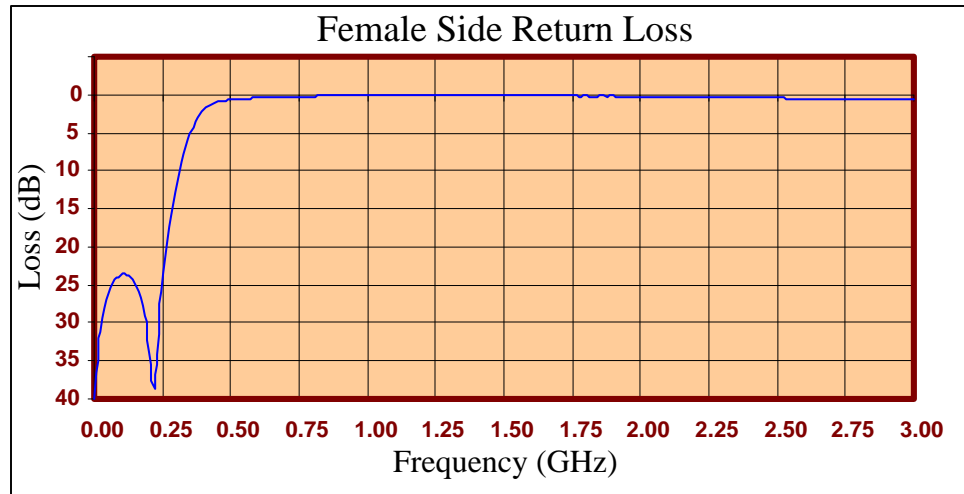
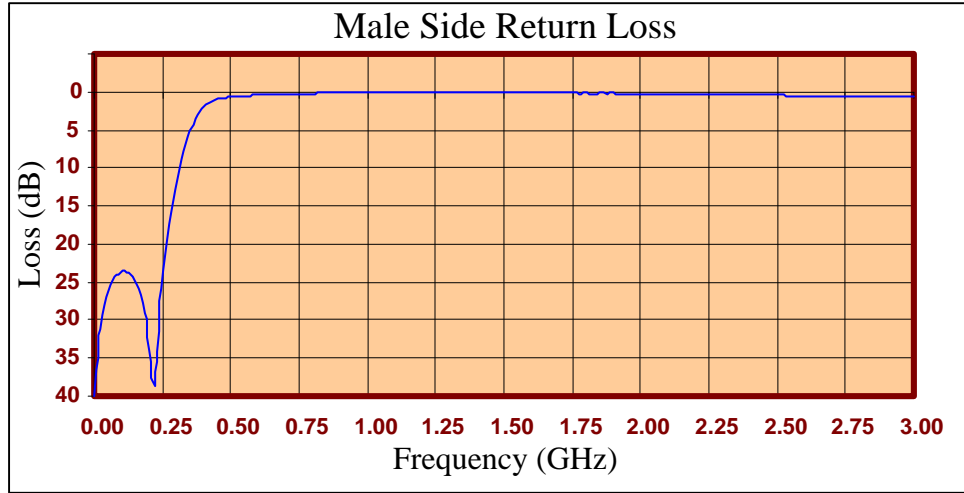
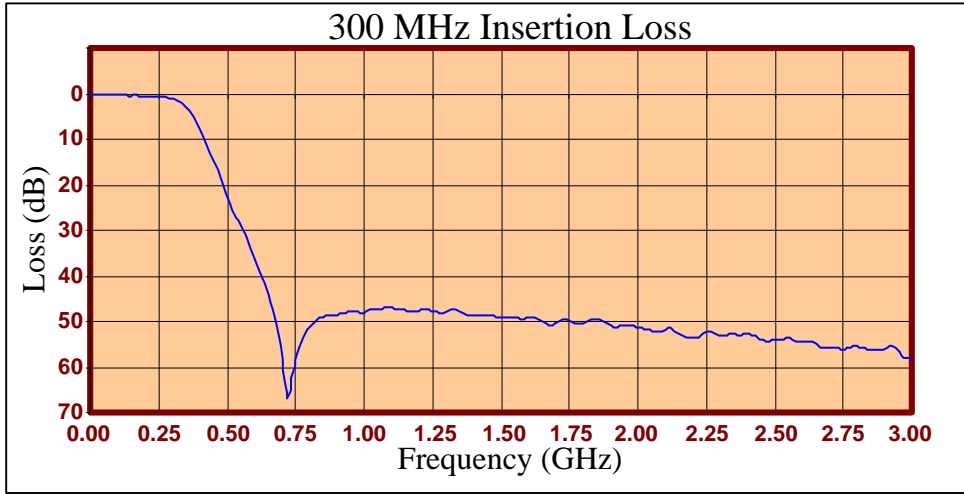
- +36dBm (4 Watts)
- Operating Temperature: -40°C to 85°C
- Storage Temperature: -55°C to 100°C



Crystek's new line of Low Pass Filters are designed in a rugged SMA housing. This filter line has excellent out-of-band rejection. Designed for Test Equipment and General Lab Use.

Rev C

Page 1 of 3





FREQ (MHz)	INSERTION LOSS (dB)	Male Return Loss (dB)	Female Return Loss (dB)
0.3	0.10	40.05	39.82
15.3	0.10	33.41	33.46
30.3	0.19	29.25	29.35
45.3	0.21	26.90	26.83
60.3	0.25	25.39	25.35
75.3	0.31	24.38	24.45
90.3	0.30	23.91	23.84
105	0.35	23.45	23.67
120	0.37	23.65	23.81
135	0.40	23.90	24.24
150	0.45	24.72	25.00
165	0.43	25.98	26.27
180	0.47	27.81	28.24
195	0.53	31.02	31.37
210	0.51	36.80	38.11
225	0.61	38.31	41.23
240	0.62	29.06	29.68
255	0.71	23.42	24.02
270	0.82	19.33	20.03
285	0.95	15.87	16.43
300	1.16	12.88	13.34
330	2.12	7.82	8.23
405	8.84	1.76	1.87
450	14.74	0.95	1.04
510	24.32	0.63	0.60
585	33.83	0.44	0.27
705	58.64	0.30	-0.04
810	50.67	0.26	-0.21
900	48.73	0.11	-0.28
1005	47.89	0.14	-0.33
1245	47.56	0.08	-0.28
1500	49.25	0.06	-0.09
1755	50.04	0.18	0.15
1995	51.19	0.22	0.36
2250	52.29	0.34	0.67
2505	54.06	0.45	0.96
2745	56.02	0.59	1.32
3000	57.97	0.68	1.81

**Product Control:**

Crystek Part Number:	CLPFL-0300	Release Date:	03-Aug-2015
Revision Level:	C	Responsible:	K. Piotrowicz

Rev C
Page 3 of 3



## X-ON Electronics

Largest Supplier of Electrical and Electronic Components

*Click to view similar products for [Signal Conditioning](#) category:*

*Click to view products by [Crystek](#) manufacturer:*

Other Similar products are found below :

[MAPDCC0001](#) [MAPDCC0004](#) [PD0409J5050S2HF](#) [880157](#) [HHS-109-PIN](#) [DC1417J5005AHF](#) [AFS14A30-2185.00-T3](#) [AFS14A35-1591.50-T3](#) [DS-323-PIN](#) [B39321R801H210](#) [1A0220-3](#) [JP510S](#) [LFB212G45SG8C341](#) [LFB322G45SN1A504](#) [LFL182G45TC3B746](#) [SF2159E](#) [30057](#)  
[FM-104-PIN](#) [CER0813B](#) [MAPDCC0005](#) [3A325](#) [40287](#) [41180](#) [ATB3225-75032NCT](#) [BD0810N50100AHF](#) [BD2425J50200AHF](#)  
[C5060J5003AHF](#) [JHS-115-PIN](#) [JP503AS](#) [DC0710J5005AHF](#) [DC2327J5005AHF](#) [DC3338J5005AHF](#) [43020](#) [LFB2H2G60BB1C106](#)  
[LFL15869MTC1B787](#) [X3C19F1-20S](#) [XC3500P-20S](#) [10013-20](#) [SF2194E](#) [CDBLB455KCAX39-B0](#) [TGL2208-SM, EVAL](#) [RF1353C](#)  
[PD0922J5050D2HF](#) [1E1305-3](#) [1F1304-3S](#) [1G1304-30](#) [B0922J7575AHF](#) [2020-6622-20](#) [TP-103-PIN](#) [BD1222J50200AHF](#)