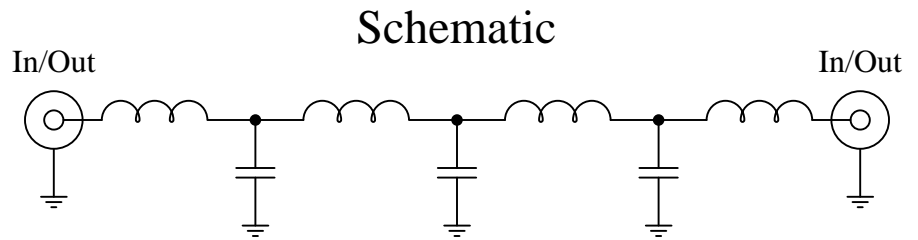


Part Number: CLPFL-0500

Low Pass Range
DC to 500 MHz



Features:

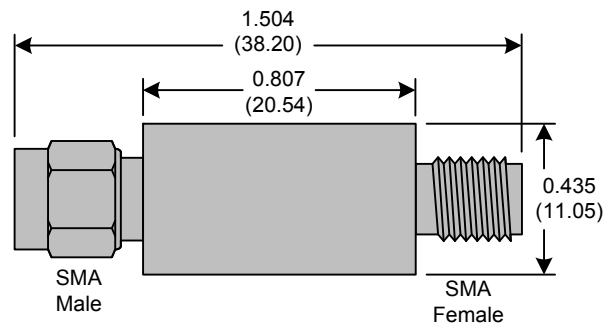
- 7th Order Butterworth Response
- 50Ω SMA Connectors

Applications:

- Test Equipment
- Lab Use

Maximum Ratings:

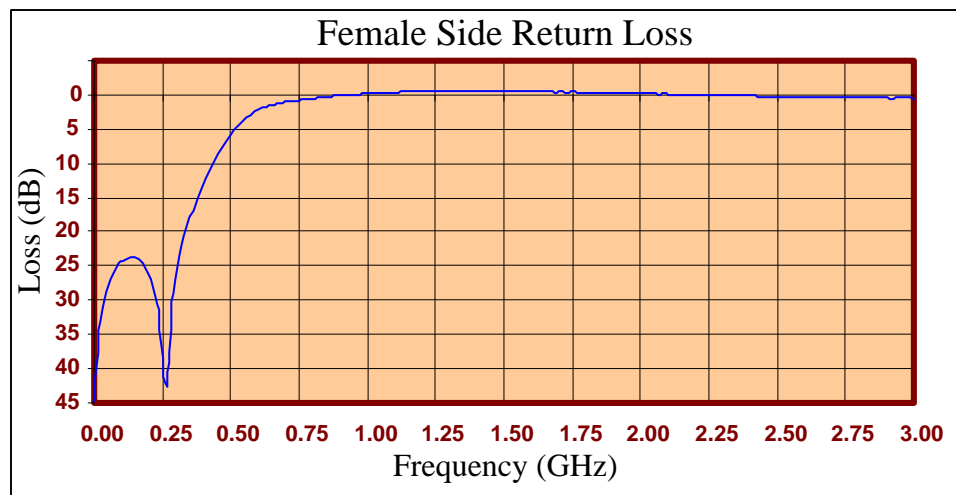
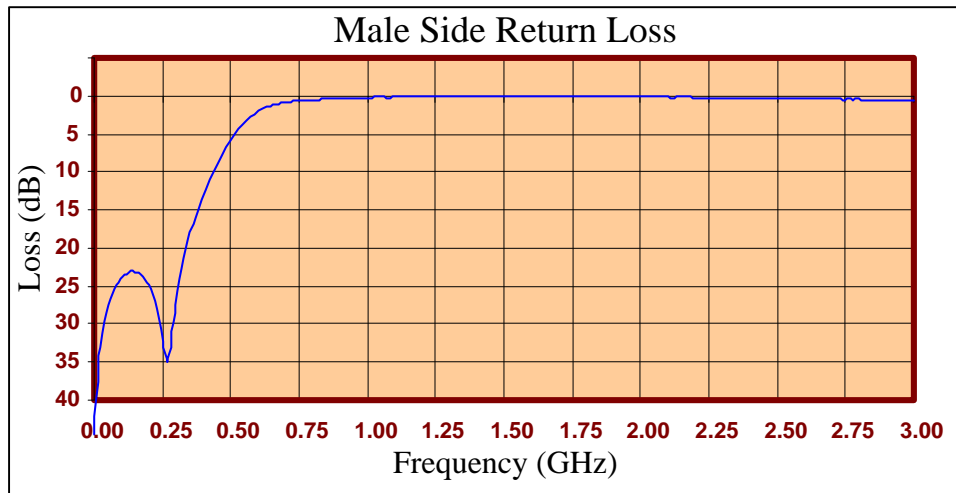
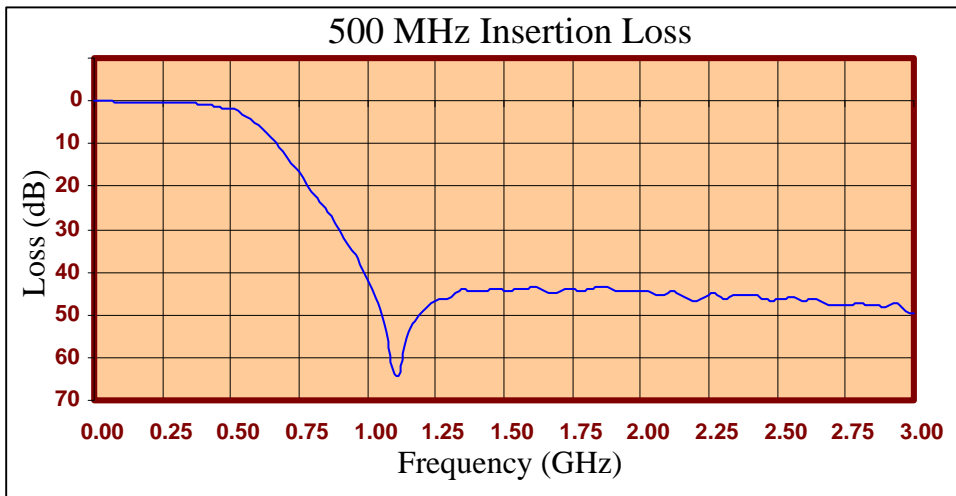
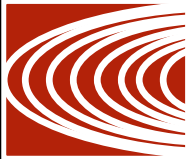
- +36dBm (4 Watts)
- Operating Temperature: -40°C to 85°C
- Storage Temperature: -55°C to 100°C



Crystek's new line of Low Pass Filters are designed in a rugged SMA housing. This filter line has excellent out-of-band rejection. Designed for Test Equipment and General Lab Use.

Rev C

Page 1 of 3





FREQ (MHz)	INSERTION LOSS (dB)	Male Return Loss (dB)	Female Return Loss (dB)
0.3	0.06	44.53	44.82
15.3	0.06	35.82	35.86
30.3	0.12	31.25	31.36
45.3	0.14	28.60	28.69
60.3	0.16	26.74	26.94
75.3	0.21	25.42	25.72
90.3	0.20	24.58	24.73
105	0.24	23.74	24.19
120	0.24	23.42	23.86
135	0.27	23.05	23.76
150	0.30	23.17	23.68
165	0.29	23.29	24.02
180	0.31	23.70	24.72
195	0.35	24.48	25.81
210	0.30	25.45	27.07
225	0.37	27.06	29.31
240	0.33	29.25	32.68
255	0.37	32.23	40.16
270	0.40	34.88	42.38
285	0.41	32.00	31.85
300	0.44	27.61	27.03
330	0.47	21.36	20.74
405	0.90	12.34	12.25
450	1.59	8.74	8.73
510	2.27	5.14	5.17
585	6.09	2.36	2.47
705	15.09	0.83	1.03
810	24.16	0.51	0.51
900	32.22	0.33	0.16
1005	44.82	0.23	-0.21
1245	46.09	0.06	-0.51
1500	44.09	0.03	-0.54
1755	43.83	0.07	-0.44
1995	44.15	0.11	-0.18
2250	45.13	0.23	0.05
2505	46.30	0.33	0.25
2745	47.77	0.46	0.37
3000	49.50	0.58	0.51

Product Control:

Crystek Part Number:	CLPFL-0500	Release Date:	04-Aug-2015
Revision Level:	C	Responsible:	K. Piotrowicz

Rev C
Page 3 of 3



X-ON Electronics

Largest Supplier of Electrical and Electronic Components

Click to view similar products for [Signal Conditioning](#) category:

Click to view products by [Crystek](#) manufacturer:

Other Similar products are found below :

[MAPDCC0001](#) [MAPDCC0004](#) [PD0409J5050S2HF](#) [880157](#) [HHS-109-PIN](#) [DC1417J5005AHF](#) [AFS14A30-2185.00-T3](#) [AFS14A35-1591.50-T3](#) [DS-323-PIN](#) [B39321R801H210](#) [1A0220-3](#) [JP510S](#) [LFB212G45SG8C341](#) [LFB322G45SN1A504](#) [LFL182G45TC3B746](#) [SF2159E](#) [30057](#)
[FM-104-PIN](#) [CER0813B](#) [MAPDCC0005](#) [3A325](#) [40287](#) [41180](#) [ATB3225-75032NCT](#) [BD0810N50100AHF](#) [BD2425J50200AHF](#)
[C5060J5003AHF](#) [JHS-115-PIN](#) [JP503AS](#) [DC0710J5005AHF](#) [DC2327J5005AHF](#) [DC3338J5005AHF](#) [43020](#) [LFB2H2G60BB1C106](#)
[LFL15869MTC1B787](#) [X3C19F1-20S](#) [XC3500P-20S](#) [10013-20](#) [SF2194E](#) [CDBLB455KCAX39-B0](#) [TGL2208-SM, EVAL](#) [RF1353C](#)
[PD0922J5050D2HF](#) [1E1305-3](#) [1F1304-3S](#) [1G1304-30](#) [B0922J7575AHF](#) [2020-6622-20](#) [TP-103-PIN](#) [BD1222J50200AHF](#)