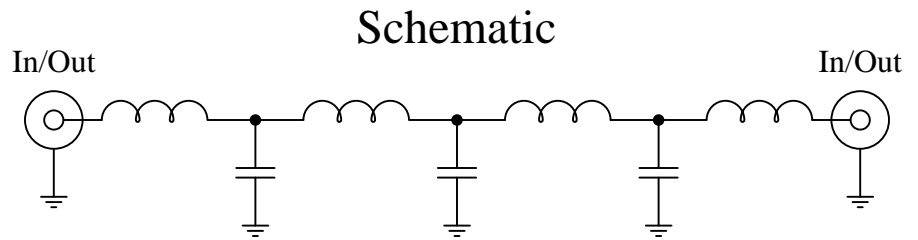


Part Number: CLPFL-0600

Low Pass Range
DC to 600 MHz



Features:

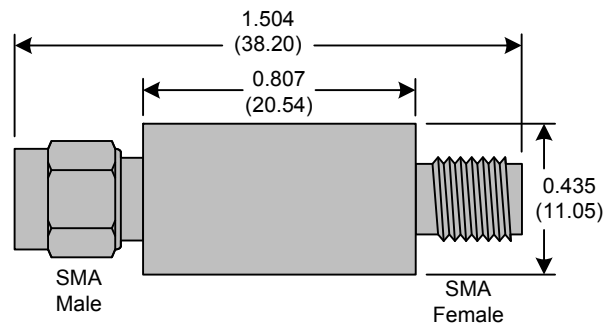
- 7th Order Butterworth Response
- 50Ω SMA Connectors

Applications:

- Test Equipment
- Lab Use

Maximum Ratings:

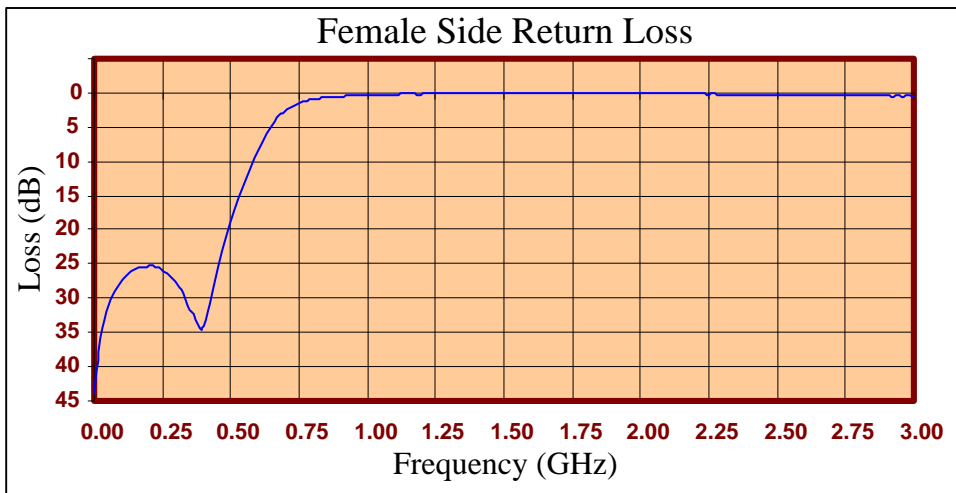
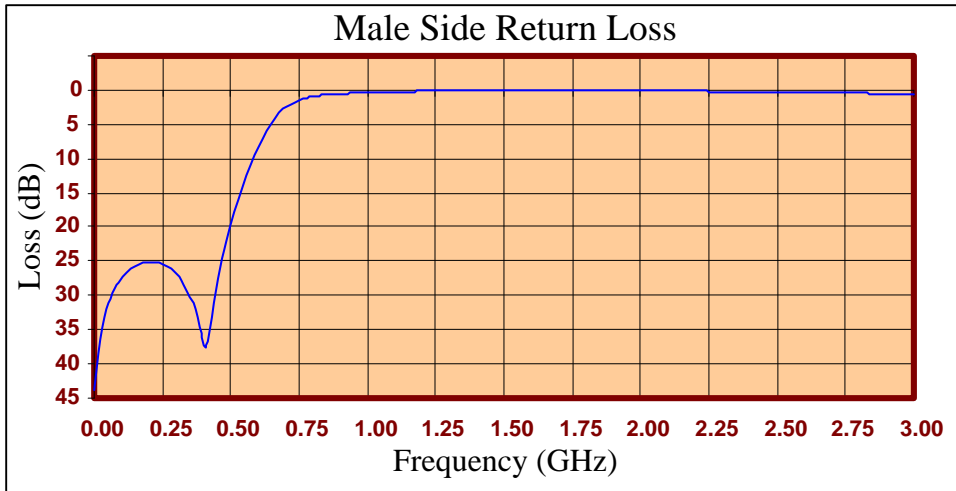
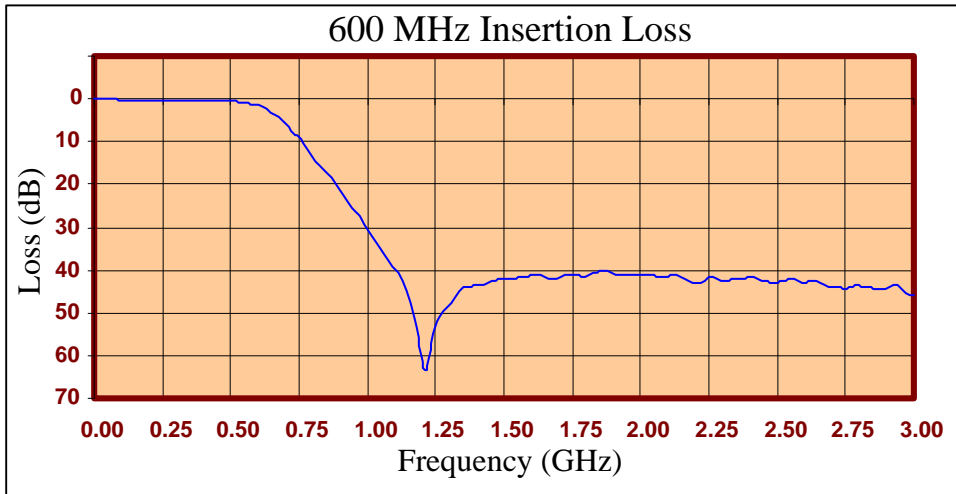
- +36dBm (4 Watts)
- Operating Temperature: -40°C to 85°C
- Storage Temperature: -55°C to 100°C



Crystek's new line of Low Pass Filters are designed in a rugged SMA housing. This filter line has excellent out-of-band rejection. Designed for Test Equipment and General Lab Use.

Rev C

Page 1 of 3





FREQ (MHz)	INSERTION LOSS (dB)	Male Return Loss (dB)	Female Return Loss (dB)
0.3	0.05	43.91	43.81
15.3	0.05	38.35	38.04
30.3	0.13	34.55	34.48
45.3	0.12	32.11	31.97
60.3	0.15	30.39	30.25
75.3	0.16	29.08	28.94
90.3	0.20	28.09	28.10
105	0.18	27.27	27.23
120	0.19	26.61	26.74
135	0.20	26.18	26.17
150	0.26	25.77	25.83
165	0.26	25.43	25.54
180	0.28	25.22	25.48
195	0.27	25.13	25.35
210	0.27	25.06	25.30
225	0.29	25.08	25.50
240	0.30	25.23	25.59
255	0.32	25.44	25.99
270	0.32	25.76	26.35
285	0.32	26.17	26.86
300	0.33	26.69	27.68
330	0.38	28.36	29.36
405	0.43	37.66	33.24
450	0.56	27.67	25.44
510	0.61	17.88	17.30
585	1.39	9.58	9.47
705	6.27	2.35	2.37
810	14.48	0.86	0.89
900	21.24	0.55	0.54
1005	30.89	0.37	0.32
1245	53.38	0.14	0.09
1500	42.23	0.03	-0.01
1755	41.06	0.05	-0.02
1995	40.94	0.10	0.09
2250	41.82	0.18	0.19
2505	42.84	0.31	0.30
2745	44.29	0.44	0.41
3000	45.80	0.55	0.49

Product Control:

Crystek Part Number:	CLPFL-0600	Release Date:	04-Aug-2015
Revision Level:	C	Responsible:	K. Piotrowicz

Rev C
Page 3 of 3



X-ON Electronics

Largest Supplier of Electrical and Electronic Components

Click to view similar products for [Signal Conditioning](#) category:

Click to view products by [Crystek](#) manufacturer:

Other Similar products are found below :

[MAPDCC0001](#) [MAPDCC0004](#) [PD0409J5050S2HF](#) [880157](#) [HHS-109-PIN](#) [DC1417J5005AHF](#) [AFS14A30-2185.00-T3](#) [AFS14A35-1591.50-T3](#) [DS-323-PIN](#) [B39321R801H210](#) [1A0220-3](#) [JP510S](#) [LFB212G45SG8C341](#) [LFB322G45SN1A504](#) [LFL182G45TC3B746](#) [SF2159E](#) [30057](#)
[FM-104-PIN](#) [CER0813B](#) [MAPDCC0005](#) [3A325](#) [40287](#) [41180](#) [ATB3225-75032NCT](#) [BD0810N50100AHF](#) [BD2425J50200AHF](#)
[C5060J5003AHF](#) [JHS-115-PIN](#) [JP503AS](#) [DC0710J5005AHF](#) [DC2327J5005AHF](#) [DC3338J5005AHF](#) [43020](#) [LFB2H2G60BB1C106](#)
[LFL15869MTC1B787](#) [X3C19F1-20S](#) [XC3500P-20S](#) [10013-20](#) [SF2194E](#) [CDBLB455KCAX39-B0](#) [TGL2208-SM, EVAL](#) [RF1353C](#)
[PD0922J5050D2HF](#) [1E1305-3](#) [1F1304-3S](#) [1G1304-30](#) [B0922J7575AHF](#) [2020-6622-20](#) [TP-103-PIN](#) [BD1222J50200AHF](#)