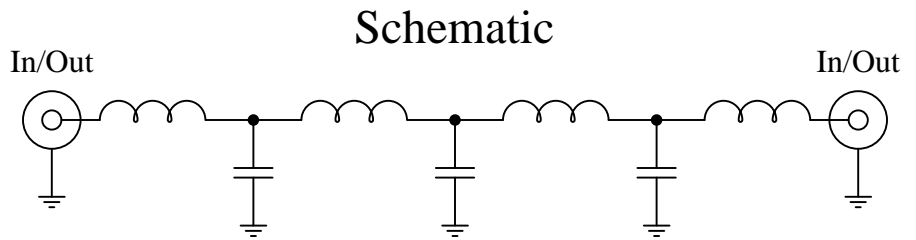


Part Number: CLPFL-0700

Low Pass Range  
DC to 700 MHz

**New**  
**Low Pass Filters**



Features:

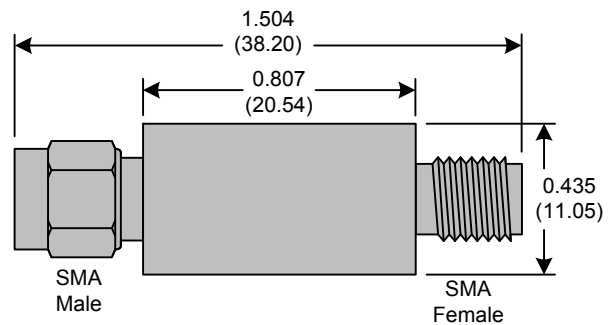
- 7<sup>th</sup> Order Butterworth Response
- 50Ω SMA Connectors

Applications:

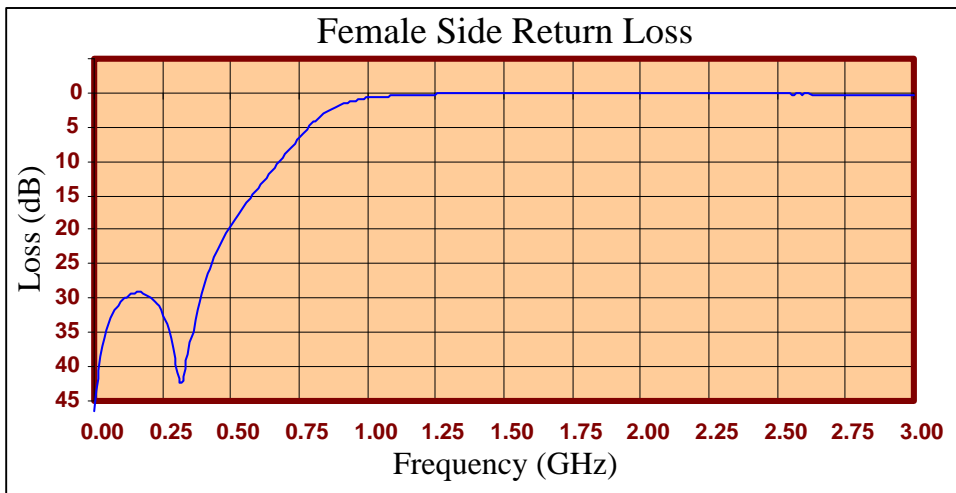
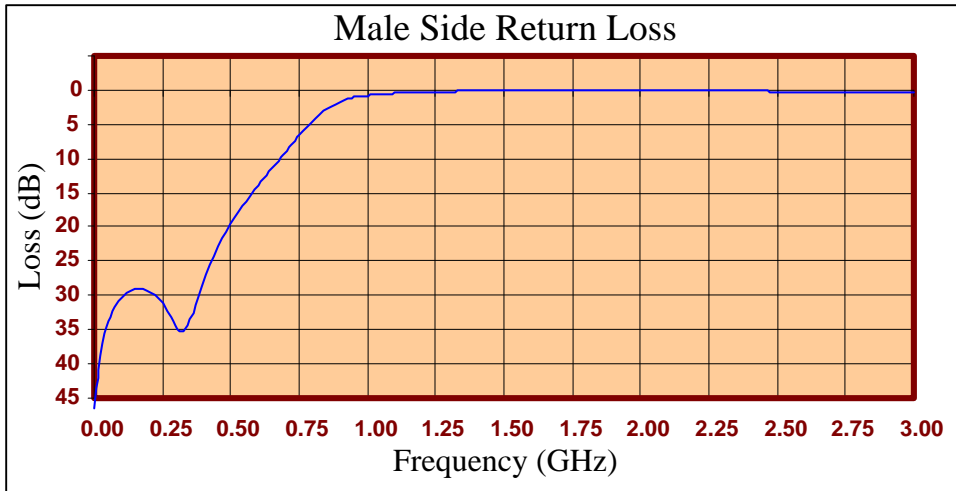
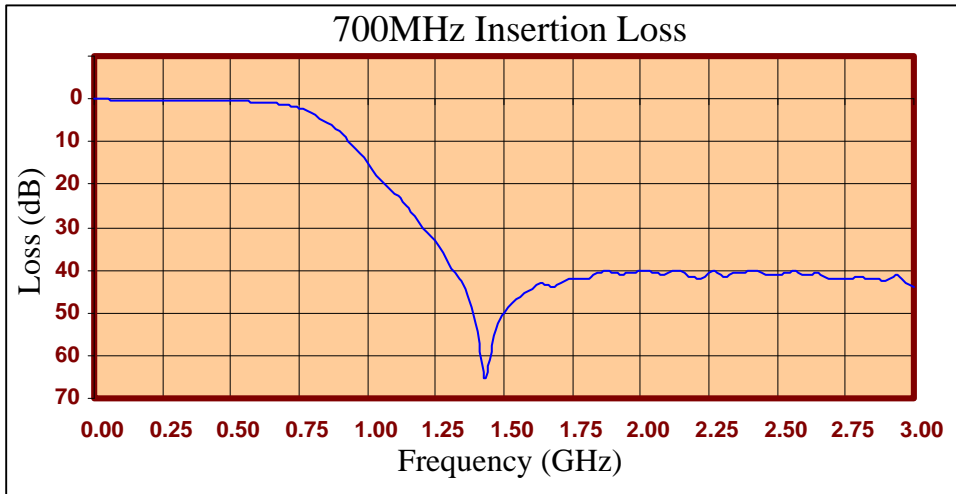
- Test Equipment
- Lab Use

Maximum Ratings:

- +36dBm (4 Watts)
- Operating Temperature: -40°C to 85°C
- Storage Temperature: -55°C to 100°C



Crystek's new line of Low Pass Filters are designed in a rugged SMA housing. This filter line has excellent out-of-band rejection. Designed for Test Equipment and General Lab Use.





FREQ (MHz)	INSERTION LOSS (dB)	Male Return Loss (dB)	Female Return Loss (dB)
0	0.04	46.40	46.37
15	0.05	40.77	40.44
30	0.11	36.97	36.96
45	0.10	34.71	34.56
60	0.13	33.06	32.93
75	0.13	31.82	31.69
90	0.18	30.92	31.03
105	0.15	30.22	30.19
120	0.16	29.65	29.86
135	0.16	29.37	29.46
150	0.21	29.12	29.31
165	0.21	28.97	29.15
180	0.24	28.97	29.41
195	0.23	29.21	29.53
210	0.22	29.50	29.83
225	0.24	29.83	30.56
240	0.25	30.52	31.20
255	0.26	31.22	32.43
270	0.27	32.25	33.87
285	0.26	33.25	35.76
300	0.27	34.28	38.87
330	0.30	35.38	42.16
405	0.36	27.06	27.30
450	0.41	22.91	22.85
510	0.51	18.75	18.59
585	0.69	14.66	14.53
705	1.39	8.77	8.73
810	3.85	4.05	4.08
900	7.78	1.74	1.76
1005	15.49	0.78	0.77
1245	33.66	0.24	0.20
1500	48.67	0.05	0.00
1755	41.69	0.02	-0.07
1995	40.50	0.04	0.00
2250	41.14	0.08	0.07
2505	41.63	0.19	0.16
2745	42.74	0.29	0.24
3000	44.32	0.39	0.31

**Product Control:**

Crystek Part Number:	CLPFL-0700	Release Date:	04-Jun-2015
Revision Level:	B	Responsible:	K. Piotrowicz

Rev B
Page 3 of 3



## X-ON Electronics

Largest Supplier of Electrical and Electronic Components

*Click to view similar products for [Signal Conditioning](#) category:*

*Click to view products by [Crystek](#) manufacturer:*

Other Similar products are found below :

[MAPDCC0001](#) [MAPDCC0004](#) [PD0409J5050S2HF](#) [880157](#) [HHS-109-PIN](#) [DC1417J5005AHF](#) [AFS14A30-2185.00-T3](#) [AFS14A35-1591.50-T3](#) [DS-323-PIN](#) [B39321R801H210](#) [1A0220-3](#) [JP510S](#) [LFB212G45SG8C341](#) [LFB322G45SN1A504](#) [LFL182G45TC3B746](#) [SF2159E](#) [30057](#)  
[FM-104-PIN](#) [CER0813B](#) [MAPDCC0005](#) [3A325](#) [40287](#) [41180](#) [ATB3225-75032NCT](#) [BD0810N50100AHF](#) [BD2425J50200AHF](#)  
[C5060J5003AHF](#) [JHS-115-PIN](#) [JP503AS](#) [DC0710J5005AHF](#) [DC2327J5005AHF](#) [DC3338J5005AHF](#) [43020](#) [LFB2H2G60BB1C106](#)  
[LFL15869MTC1B787](#) [X3C19F1-20S](#) [XC3500P-20S](#) [10013-20](#) [SF2194E](#) [CDBLB455KCAX39-B0](#) [TGL2208-SM, EVAL](#) [RF1353C](#)  
[PD0922J5050D2HF](#) [1E1305-3](#) [1F1304-3S](#) [1G1304-30](#) [B0922J7575AHF](#) [2020-6622-20](#) [TP-103-PIN](#) [BD1222J50200AHF](#)