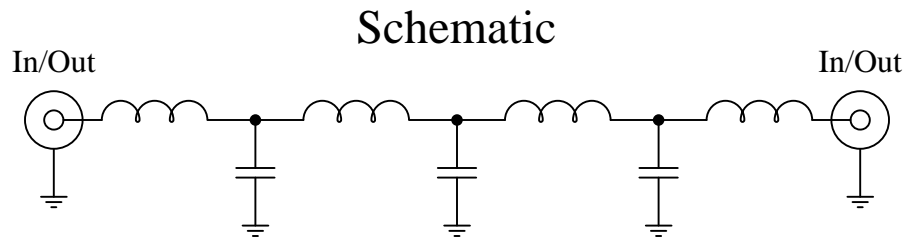


Part Number: CLPFL-0900

Low Pass Range  
DC to 900 MHz



### Features:

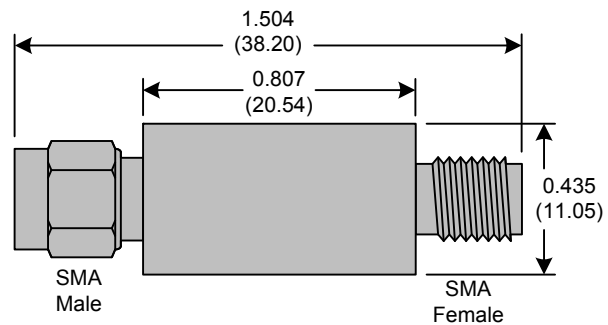
- 7<sup>th</sup> Order Butterworth Response
- 50Ω SMA Connectors

### Applications:

- Test Equipment
- Lab Use

### Maximum Ratings:

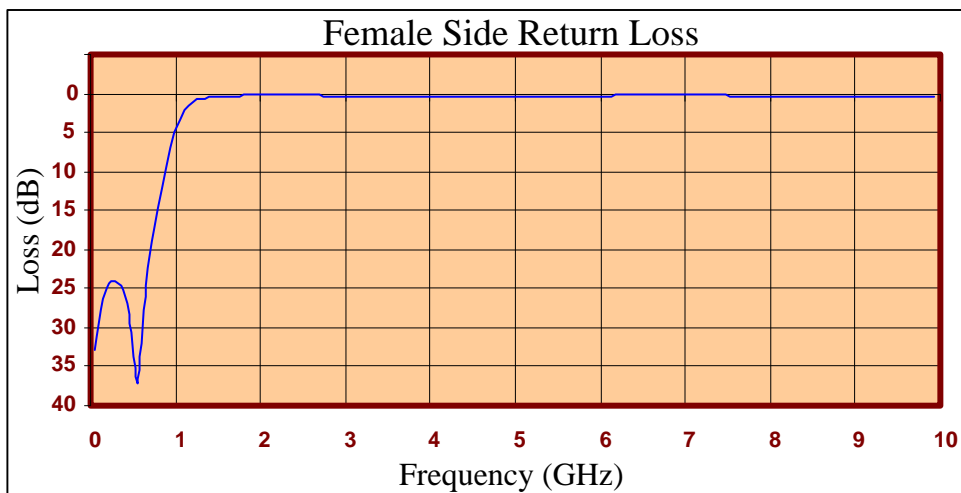
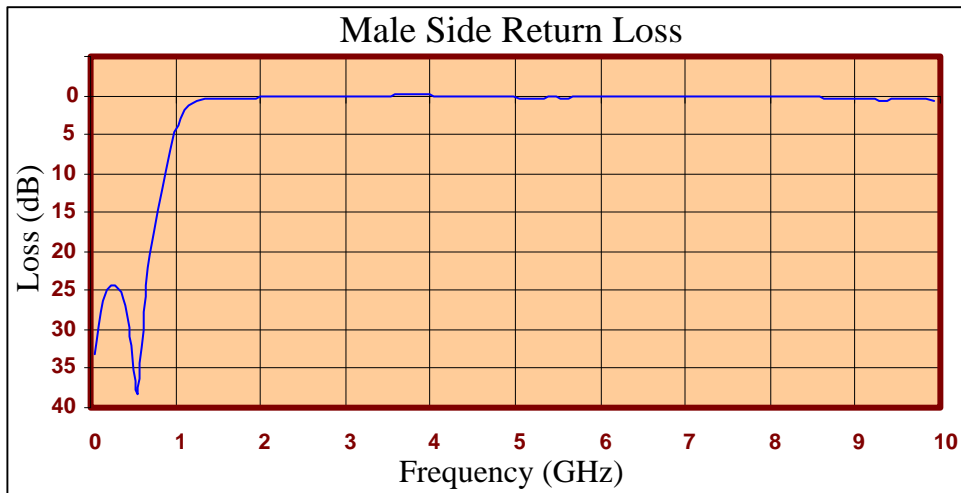
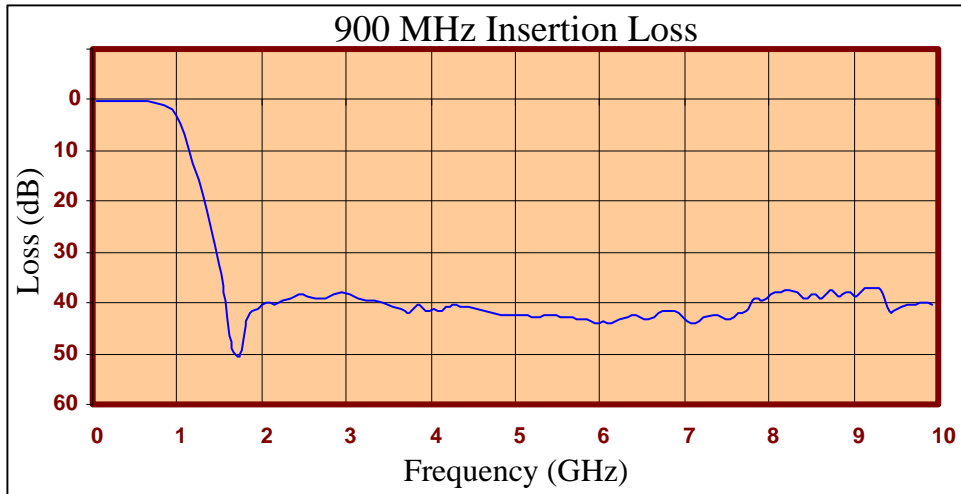
- +36dBm (4 Watts)
- Operating Temperature: -40°C to 85°C
- Storage Temperature: -55°C to 100°C



Crystek's new line of Low Pass Filters are designed in a rugged SMA housing. This filter line has excellent out-of-band rejection. Designed for Test Equipment and General Lab Use.

Rev C

Page 1 of 3





FREQ (MHz)	INSERTION LOSS (dB)	Male Return Loss (dB)	Female Return Loss (dB)
50.000	0.06	33.28	33.02
249.500	0.18	24.43	24.07
449.000	0.24	29.64	28.33
648.500	0.39	24.27	24.50
848.000	0.87	11.96	11.99
947.750	1.96	6.90	6.98
1047.500	4.60	3.07	3.20
1247.000	15.78	0.72	0.82
1446.500	28.83	0.47	0.46
1546.250	36.47	0.41	0.38
1646.000	49.01	0.37	0.32
1845.500	42.94	0.30	0.24
2045.000	40.02	0.25	0.21
2244.500	39.37	0.21	0.21
2444.000	38.18	0.19	0.23
2643.500	39.01	0.15	0.27
3042.500	38.32	0.10	0.34
3341.750	39.36	0.04	0.37
3641.000	41.32	0.00	0.37
4040.000	41.15	0.02	0.31
4339.250	40.67	0.16	0.29
4638.500	41.67	0.24	0.32
5037.500	42.55	0.28	0.40
5336.750	42.60	0.27	0.42
5636.000	42.86	0.27	0.39
6035.000	43.82	0.25	0.31
6334.250	42.99	0.23	0.24
6633.500	42.85	0.22	0.20
7032.500	43.59	0.20	0.20
7331.750	42.33	0.19	0.23
7631.000	42.08	0.17	0.28
8030.000	38.40	0.19	0.36
8329.250	37.84	0.20	0.37
8628.500	39.02	0.29	0.38
9027.500	38.74	0.41	0.38
9326.750	37.66	0.57	0.42
9626.000	40.39	0.49	0.41
9925.250	40.21	0.65	0.55

**Product Control:**

Crystek Part Number:	CLPFL-0900	Release Date:	04-Aug-2015
Revision Level:	C	Responsible:	K. Piotrowicz

Rev C
Page 3 of 3



## X-ON Electronics

Largest Supplier of Electrical and Electronic Components

*Click to view similar products for [Signal Conditioning](#) category:*

*Click to view products by [Crystek](#) manufacturer:*

Other Similar products are found below :

[MAPDCC0001](#) [MAPDCC0004](#) [PD0409J5050S2HF](#) [880157](#) [HHS-109-PIN](#) [DC1417J5005AHF](#) [AFS14A30-2185.00-T3](#) [AFS14A35-1591.50-T3](#) [DS-323-PIN](#) [B39321R801H210](#) [1A0220-3](#) [JP510S](#) [LFB212G45SG8C341](#) [LFB322G45SN1A504](#) [LFL182G45TC3B746](#) [SF2159E](#) [30057](#)  
[FM-104-PIN](#) [CER0813B](#) [MAPDCC0005](#) [3A325](#) [40287](#) [41180](#) [ATB3225-75032NCT](#) [BD0810N50100AHF](#) [BD2425J50200AHF](#)  
[C5060J5003AHF](#) [JHS-115-PIN](#) [JP503AS](#) [DC0710J5005AHF](#) [DC2327J5005AHF](#) [DC3338J5005AHF](#) [43020](#) [LFB2H2G60BB1C106](#)  
[LFL15869MTC1B787](#) [X3C19F1-20S](#) [XC3500P-20S](#) [10013-20](#) [SF2194E](#) [CDBLB455KCAX39-B0](#) [TGL2208-SM, EVAL](#) [RF1353C](#)  
[PD0922J5050D2HF](#) [1E1305-3](#) [1F1304-3S](#) [1G1304-30](#) [B0922J7575AHF](#) [2020-6622-20](#) [TP-103-PIN](#) [BD1222J50200AHF](#)