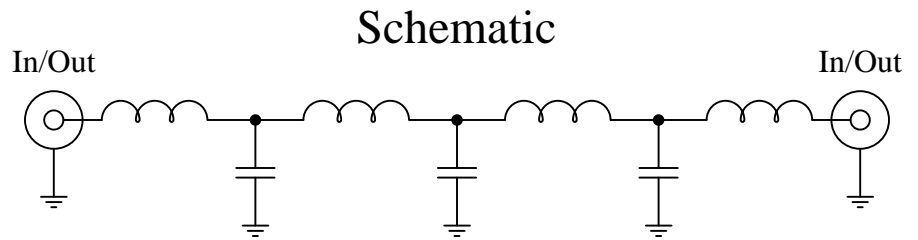


Part Number: CLPFL-1200

Low Pass Range  
DC to 1200 MHz



### Features:

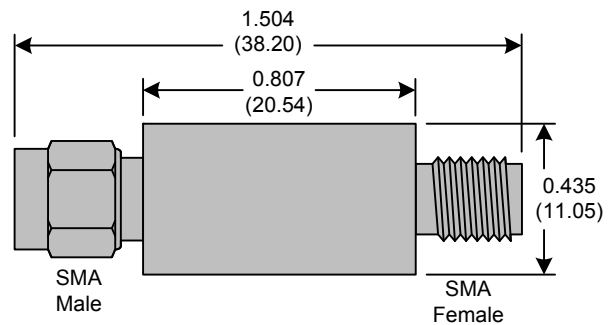
- 7<sup>th</sup> Order Butterworth Response
- 50Ω SMA Connectors

### Applications:

- Test Equipment
- Lab Use

### Maximum Ratings:

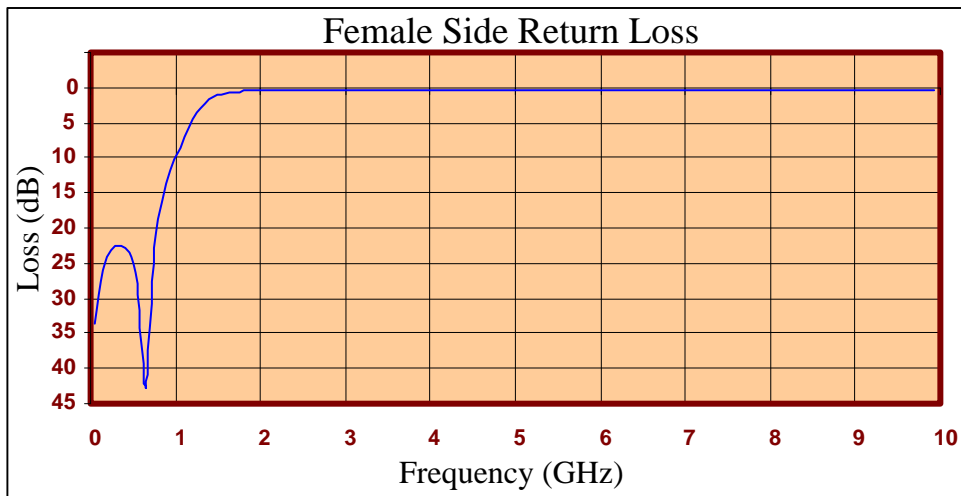
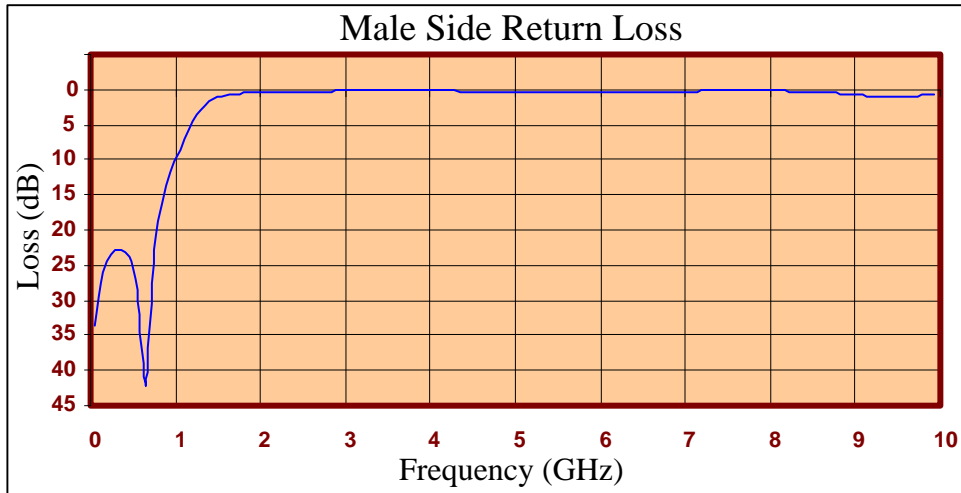
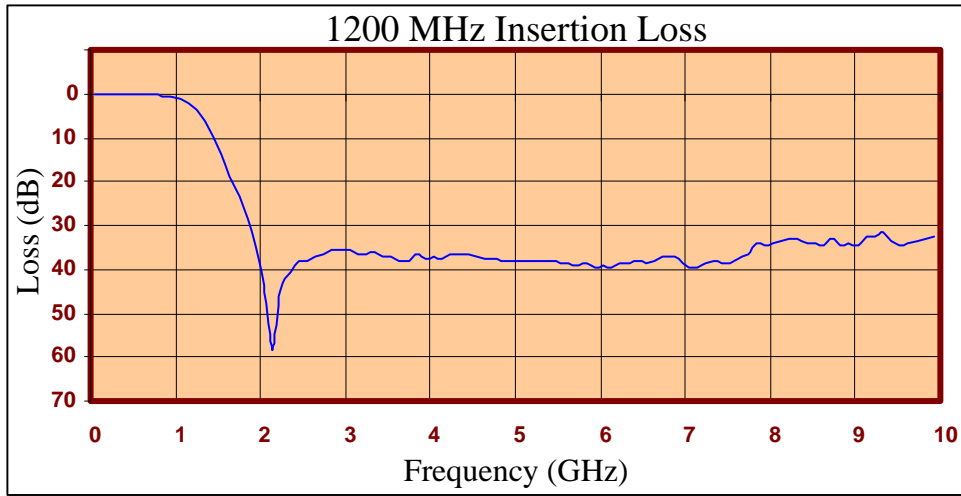
- +36dBm (4 Watts)
- Operating Temperature: -40°C to 85°C
- Storage Temperature: -55°C to 100°C



Crystek's new line of Low Pass Filters are designed in a rugged SMA housing. This filter line has excellent out-of-band rejection. Designed for Test Equipment and General Lab Use.

Rev C

Page 1 of 3





FREQ (MHz)	INSERTION LOSS (dB)	Male Return Loss (dB)	Female Return Loss (dB)
50.000	0.07	33.75	33.51
249.500	0.16	23.39	23.24
449.000	0.20	23.94	23.53
648.500	0.28	42.15	42.72
848.000	0.51	16.26	16.21
947.750	0.79	11.89	11.80
1047.500	1.21	8.54	8.48
1247.000	3.57	3.64	3.70
1446.500	9.99	1.27	1.38
1546.250	13.65	0.87	0.95
1646.000	18.62	0.68	0.72
1845.500	28.35	0.52	0.47
2045.000	43.85	0.43	0.33
2244.500	44.43	0.35	0.26
2444.000	38.12	0.30	0.25
2643.500	37.15	0.25	0.26
3042.500	35.79	0.20	0.34
3341.750	36.23	0.15	0.40
3641.000	37.94	0.07	0.43
4040.000	36.95	0.10	0.37
4339.250	36.54	0.24	0.33
4638.500	37.58	0.32	0.35
5037.500	38.28	0.36	0.42
5336.750	38.29	0.36	0.46
5636.000	38.55	0.36	0.44
6035.000	39.33	0.33	0.37
6334.250	38.58	0.31	0.31
6633.500	38.34	0.28	0.26
7032.500	39.37	0.23	0.23
7331.750	38.00	0.22	0.25
7631.000	37.36	0.19	0.29
8030.000	33.82	0.20	0.34
8329.250	33.26	0.24	0.38
8628.500	34.42	0.44	0.39
9027.500	34.59	0.79	0.38
9326.750	31.69	0.96	0.47
9626.000	33.88	0.88	0.46
9925.250	32.61	0.84	0.54

**Product Control:**

Crystek Part Number:	CLPFL-1200	Release Date:	04-Aug-2015
Revision Level:	C	Responsible:	K. Piotrowicz

Rev C
Page 3 of 3



## X-ON Electronics

Largest Supplier of Electrical and Electronic Components

*Click to view similar products for [Signal Conditioning](#) category:*

*Click to view products by [Crystek](#) manufacturer:*

Other Similar products are found below :

[MAPDCC0001](#) [MAPDCC0004](#) [PD0409J5050S2HF](#) [880157](#) [HHS-109-PIN](#) [DC1417J5005AHF](#) [AFS14A30-2185.00-T3](#) [AFS14A35-1591.50-T3](#) [DS-323-PIN](#) [B39321R801H210](#) [1A0220-3](#) [JP510S](#) [LFB212G45SG8C341](#) [LFB322G45SN1A504](#) [LFL182G45TC3B746](#) [SF2159E](#) [30057](#)  
[FM-104-PIN](#) [CER0813B](#) [MAPDCC0005](#) [3A325](#) [40287](#) [41180](#) [ATB3225-75032NCT](#) [BD0810N50100AHF](#) [BD2425J50200AHF](#)  
[C5060J5003AHF](#) [JHS-115-PIN](#) [JP503AS](#) [DC0710J5005AHF](#) [DC2327J5005AHF](#) [DC3338J5005AHF](#) [43020](#) [LFB2H2G60BB1C106](#)  
[LFL15869MTC1B787](#) [X3C19F1-20S](#) [XC3500P-20S](#) [10013-20](#) [SF2194E](#) [CDBLB455KCAX39-B0](#) [TGL2208-SM, EVAL](#) [RF1353C](#)  
[PD0922J5050D2HF](#) [1E1305-3](#) [1F1304-3S](#) [1G1304-30](#) [B0922J7575AHF](#) [2020-6622-20](#) [TP-103-PIN](#) [BD1222J50200AHF](#)