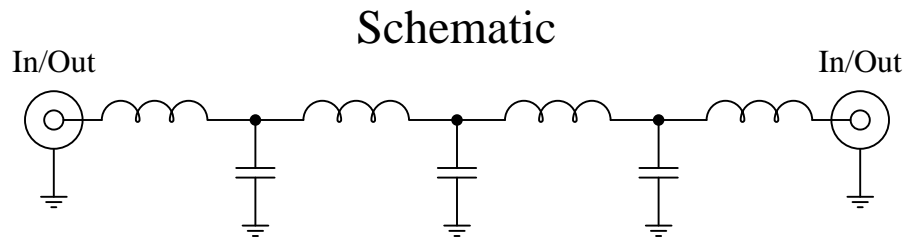


Part Number: CLPFL-1400

Low Pass Range
DC to 1400 MHz



Features:

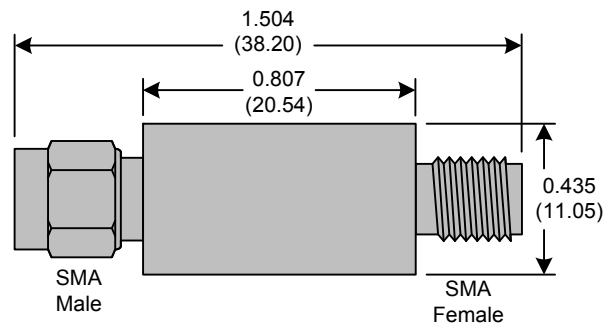
- 7th Order Butterworth Response
- 50Ω SMA Connectors

Applications:

- Test Equipment
- Lab Use

Maximum Ratings:

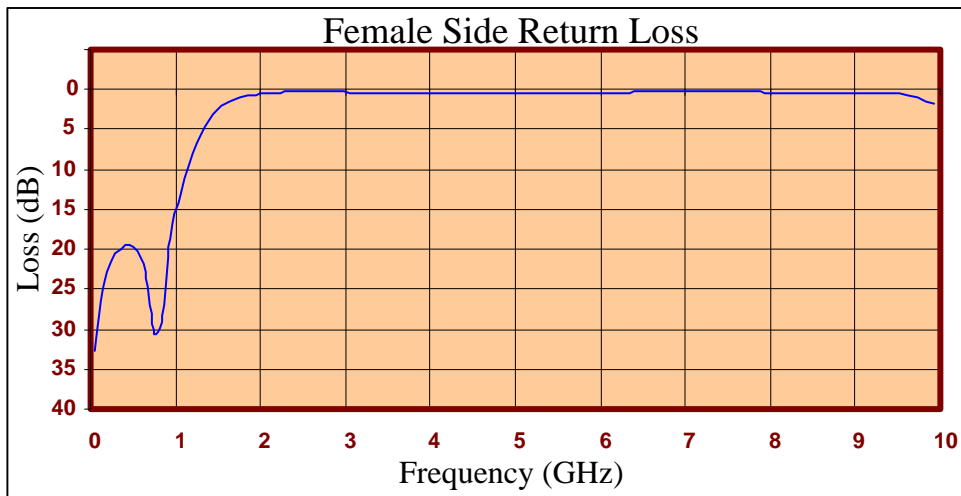
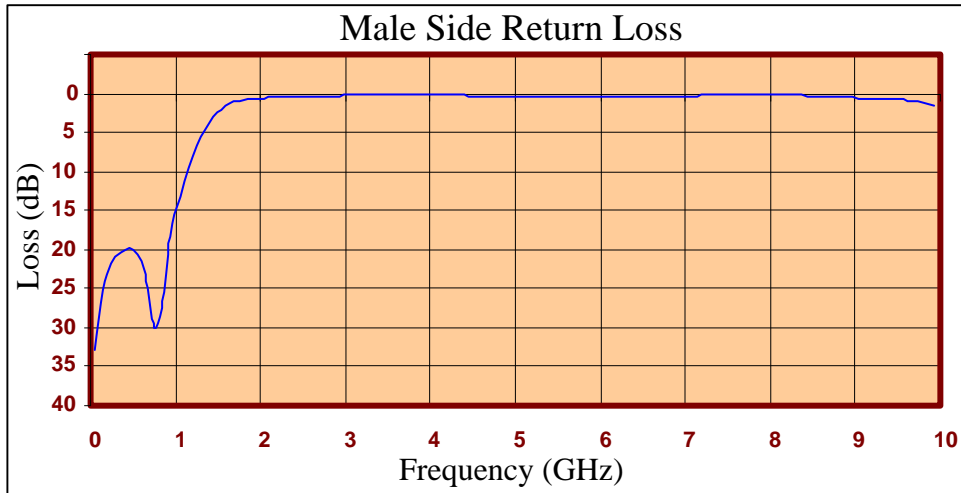
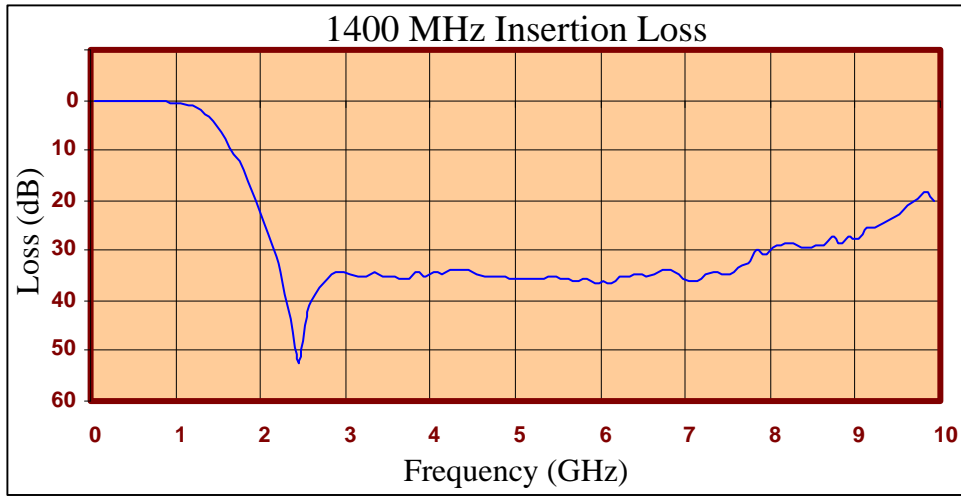
- +36dBm (4 Watts)
- Operating Temperature: -40°C to 85°C
- Storage Temperature: -55°C to 100°C



Crystek's new line of Low Pass Filters are designed in a rugged SMA housing. This filter line has excellent out-of-band rejection. Designed for Test Equipment and General Lab Use.

Rev C

Page 1 of 3





FREQ (MHz)	INSERTION LOSS (dB)	Male Return Loss (dB)	Female Return Loss (dB)
50.000	0.05	32.92	32.82
249.500	0.15	21.78	21.56
449.000	0.21	19.87	19.48
648.500	0.24	23.26	22.81
848.000	0.33	27.42	29.04
947.750	0.44	18.49	18.67
1047.500	0.63	13.30	13.30
1247.000	1.50	6.81	6.80
1446.500	4.10	3.06	3.17
1546.250	6.28	1.98	2.13
1646.000	9.47	1.32	1.47
1845.500	16.35	0.75	0.83
2045.000	24.49	0.59	0.54
2244.500	34.27	0.48	0.37
2444.000	52.38	0.40	0.30
2643.500	38.60	0.34	0.27
3042.500	34.73	0.26	0.34
3341.750	34.44	0.20	0.41
3641.000	35.84	0.12	0.46
4040.000	34.39	0.13	0.41
4339.250	34.07	0.26	0.37
4638.500	34.98	0.34	0.39
5037.500	35.53	0.38	0.46
5336.750	35.43	0.37	0.49
5636.000	35.64	0.38	0.47
6035.000	36.23	0.38	0.40
6334.250	35.32	0.36	0.34
6633.500	34.87	0.35	0.28
7032.500	36.01	0.29	0.25
7331.750	34.38	0.25	0.26
7631.000	33.35	0.20	0.30
8030.000	29.41	0.19	0.35
8329.250	28.82	0.23	0.38
8628.500	28.95	0.39	0.38
9027.500	27.48	0.59	0.38
9326.750	24.34	0.72	0.45
9626.000	21.02	0.86	0.74
9925.250	19.92	1.43	1.67

Product Control:

Crystek Part Number:	CLPFL-1400	Release Date:	04-Aug-2015
Revision Level:	C	Responsible:	K. Piotrowicz

Rev C
Page 3 of 3



X-ON Electronics

Largest Supplier of Electrical and Electronic Components

Click to view similar products for [Signal Conditioning](#) category:

Click to view products by [Crystek](#) manufacturer:

Other Similar products are found below :

[MAPDCC0001](#) [MAPDCC0004](#) [PD0409J5050S2HF](#) [880157](#) [HHS-109-PIN](#) [DC1417J5005AHF](#) [AFS14A30-2185.00-T3](#) [AFS14A35-1591.50-T3](#) [DS-323-PIN](#) [B39321R801H210](#) [1A0220-3](#) [JP510S](#) [LFB212G45SG8C341](#) [LFB322G45SN1A504](#) [LFL182G45TC3B746](#) [SF2159E](#) [30057](#) [FM-104-PIN](#) [CER0813B](#) [MAPDCC0005](#) [3A325](#) [40287](#) [41180](#) [ATB3225-75032NCT](#) [BD0810N50100AHF](#) [BD2425J50200AHF](#) [C5060J5003AHF](#) [JHS-115-PIN](#) [JP503AS](#) [DC0710J5005AHF](#) [DC2327J5005AHF](#) [DC3338J5005AHF](#) [43020](#) [LFB2H2G60BB1C106](#) [LFL15869MTC1B787](#) [X3C19F1-20S](#) [XC3500P-20S](#) [10013-20](#) [SF2194E](#) [CDBLB455KCAX39-B0](#) [TGL2208-SM, EVAL](#) [RF1353C](#) [PD0922J5050D2HF](#) [1E1305-3](#) [1F1304-3S](#) [1G1304-30](#) [B0922J7575AHF](#) [2020-6622-20](#) [TP-103-PIN](#) [BD1222J50200AHF](#)