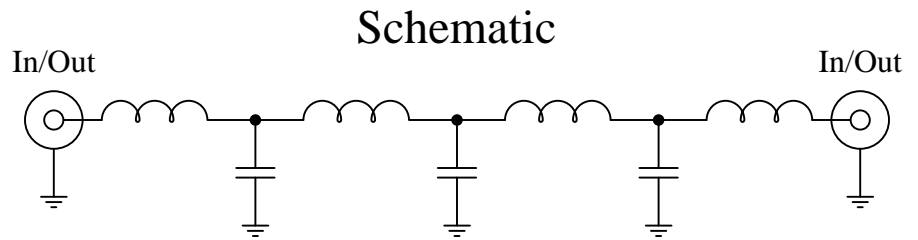


Part Number: CLPFL-1600

Low Pass Range
DC to 1600 MHz



Features:

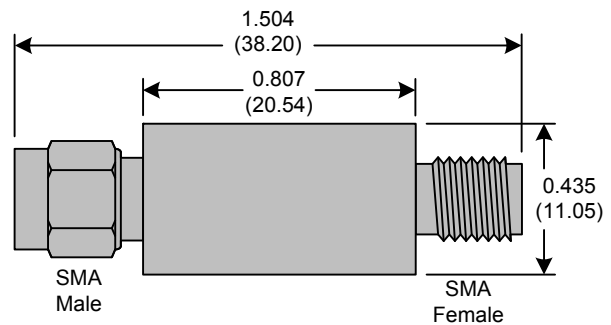
- 7th Order Butterworth Response
- 50Ω SMA Connectors

Applications:

- Test Equipment
- Lab Use

Maximum Ratings:

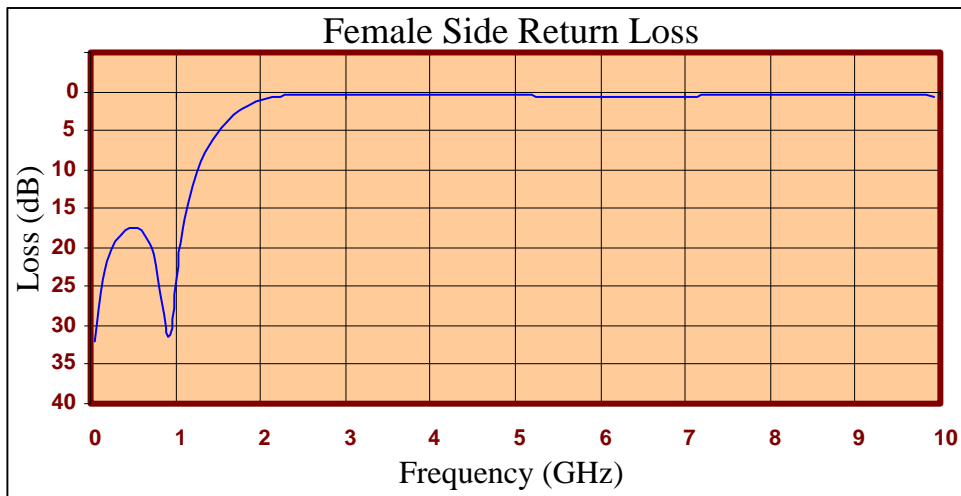
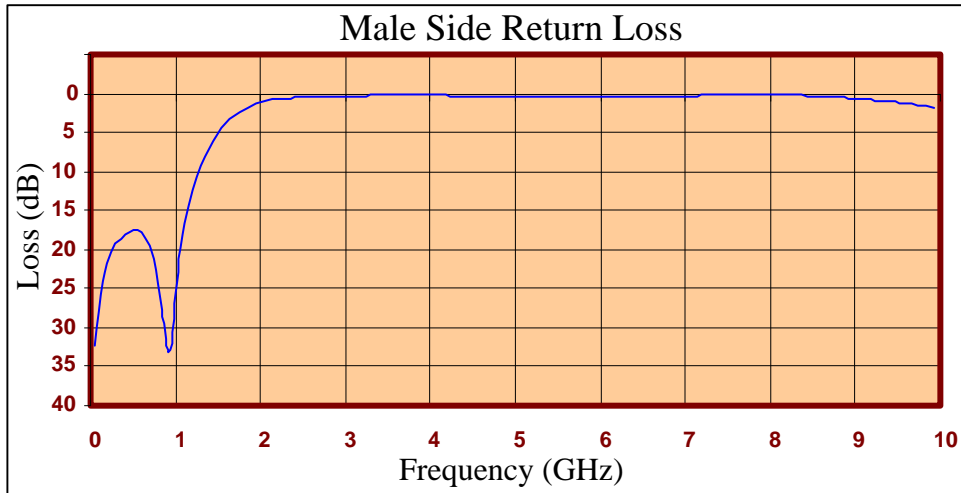
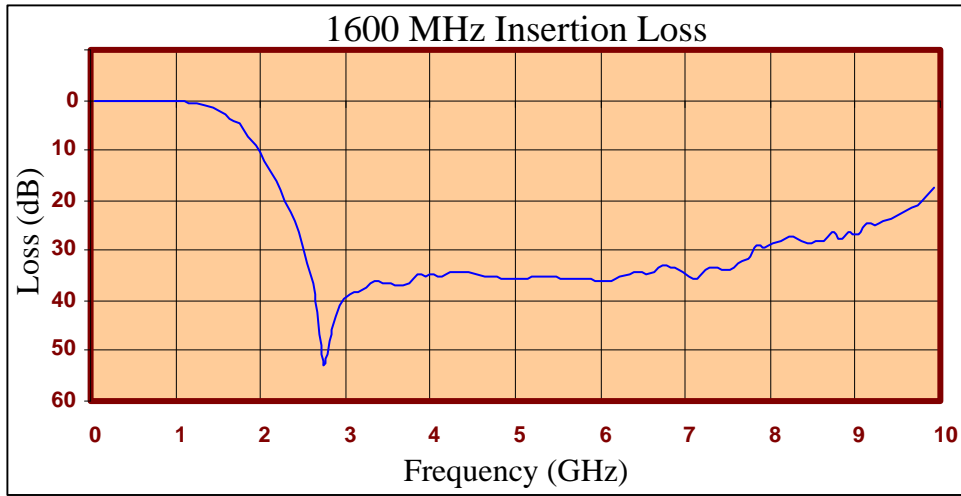
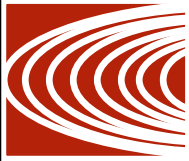
- +36dBm (4 Watts)
- Operating Temperature: -40°C to 85°C
- Storage Temperature: -55°C to 100°C



Crystek's new line of Low Pass Filters are designed in a rugged SMA housing. This filter line has excellent out-of-band rejection. Designed for Test Equipment and General Lab Use.

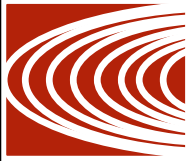
Rev C

Page 1 of 3



Rev C
Page 2 of 3





FREQ (MHz)	INSERTION LOSS (dB)	Male Return Loss (dB)	Female Return Loss (dB)
50.000	0.02	32.19	32.15
249.500	0.15	20.40	20.37
449.000	0.22	17.66	17.56
648.500	0.23	18.65	18.52
848.000	0.24	27.72	27.30
947.750	0.28	32.83	31.08
1047.500	0.34	19.84	19.62
1247.000	0.66	10.61	10.52
1446.500	1.44	6.05	6.01
1546.250	2.52	4.54	4.54
1646.000	3.59	3.37	3.41
1845.500	7.35	1.80	1.89
2045.000	12.23	1.03	1.04
2244.500	18.08	0.70	0.63
2444.000	26.50	0.53	0.42
2643.500	38.90	0.42	0.33
3042.500	38.88	0.31	0.33
3341.750	36.18	0.26	0.40
3641.000	36.77	0.18	0.45
4040.000	34.76	0.19	0.42
4339.250	34.36	0.31	0.39
4638.500	35.08	0.39	0.42
5037.500	35.48	0.46	0.53
5336.750	35.30	0.47	0.61
5636.000	35.47	0.47	0.65
6035.000	35.91	0.45	0.68
6334.250	34.91	0.42	0.69
6633.500	34.34	0.37	0.67
7032.500	35.40	0.30	0.60
7331.750	33.58	0.26	0.50
7631.000	32.42	0.21	0.46
8030.000	28.40	0.19	0.47
8329.250	27.88	0.21	0.49
8628.500	27.89	0.38	0.49
9027.500	26.68	0.70	0.44
9326.750	24.10	1.01	0.42
9626.000	21.88	1.29	0.43
9925.250	17.44	1.75	0.65

Product Control:

Crystek Part Number:	CLPFL-1600	Release Date:	04-Aug-2015
Revision Level:	C	Responsible:	K. Piotrowicz

Rev C
Page 3 of 3



X-ON Electronics

Largest Supplier of Electrical and Electronic Components

Click to view similar products for [Signal Conditioning](#) category:

Click to view products by [Crystek](#) manufacturer:

Other Similar products are found below :

[MAPDCC0001](#) [MAPDCC0004](#) [PD0409J5050S2HF](#) [880157](#) [HHS-109-PIN](#) [DC1417J5005AHF](#) [AFS14A30-2185.00-T3](#) [AFS14A35-1591.50-T3](#) [DS-323-PIN](#) [B39321R801H210](#) [1A0220-3](#) [JP510S](#) [LFB212G45SG8C341](#) [LFB322G45SN1A504](#) [LFL182G45TC3B746](#) [SF2159E](#) [30057](#)
[FM-104-PIN](#) [CER0813B](#) [MAPDCC0005](#) [3A325](#) [40287](#) [41180](#) [ATB3225-75032NCT](#) [BD0810N50100AHF](#) [BD2425J50200AHF](#)
[C5060J5003AHF](#) [JHS-115-PIN](#) [JP503AS](#) [DC0710J5005AHF](#) [DC2327J5005AHF](#) [DC3338J5005AHF](#) [43020](#) [LFB2H2G60BB1C106](#)
[LFL15869MTC1B787](#) [X3C19F1-20S](#) [XC3500P-20S](#) [10013-20](#) [SF2194E](#) [CDBLB455KCAX39-B0](#) [TGL2208-SM, EVAL](#) [RF1353C](#)
[PD0922J5050D2HF](#) [1E1305-3](#) [1F1304-3S](#) [1G1304-30](#) [B0922J7575AHF](#) [2020-6622-20](#) [TP-103-PIN](#) [BD1222J50200AHF](#)