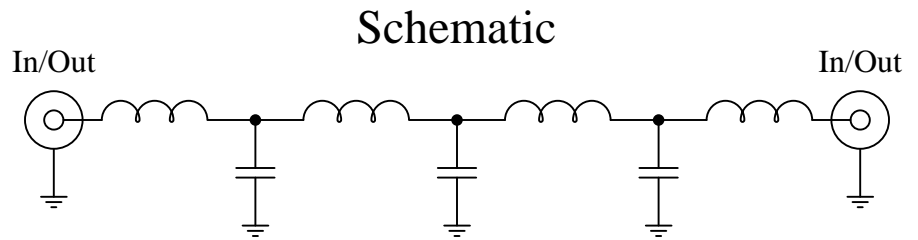


Part Number: CLPFL-2000

Low Pass Range  
DC to 2000 MHz



### Features:

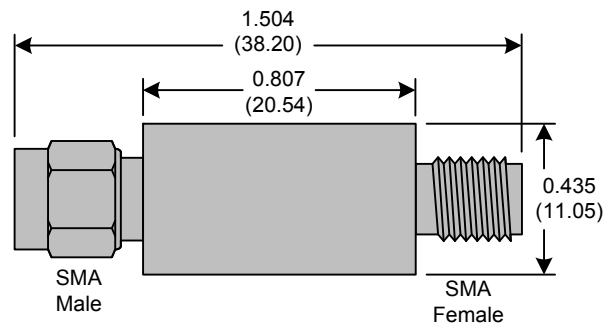
- 7<sup>th</sup> Order Butterworth Response
- 50Ω SMA Connectors

### Applications:

- Test Equipment
- Lab Use

### Maximum Ratings:

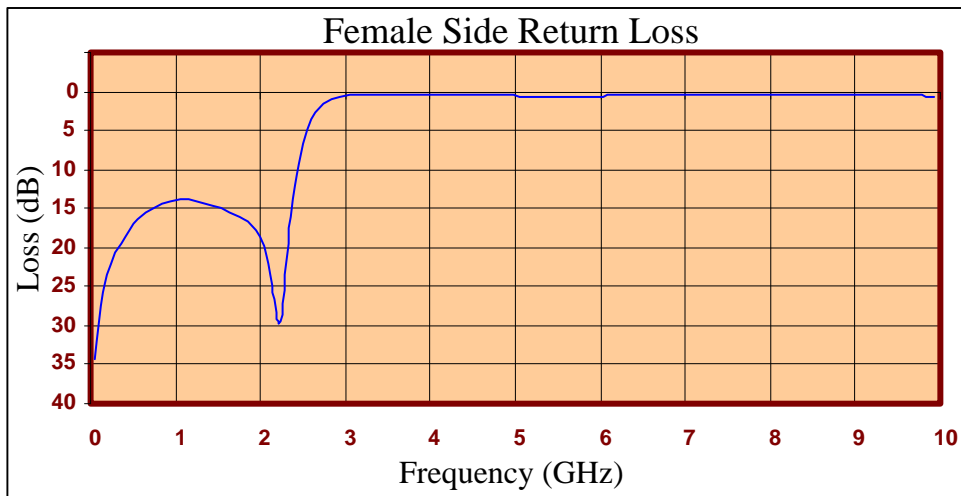
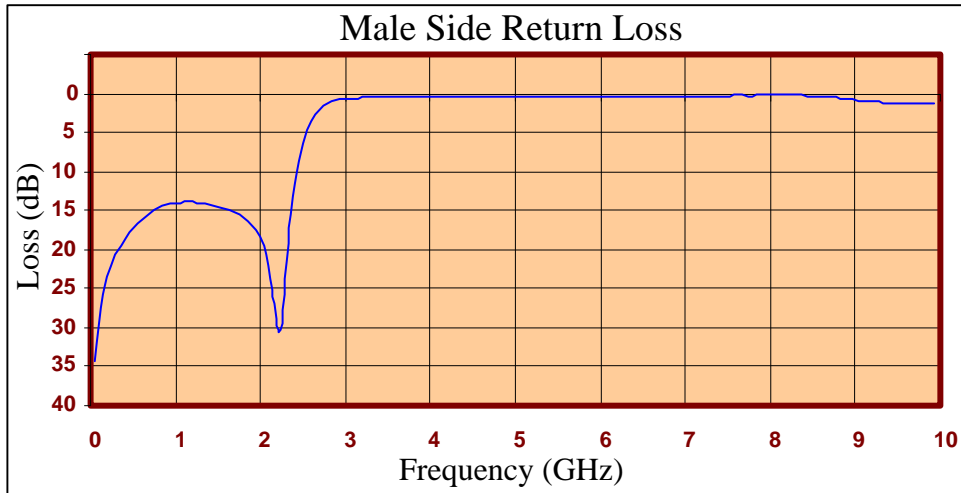
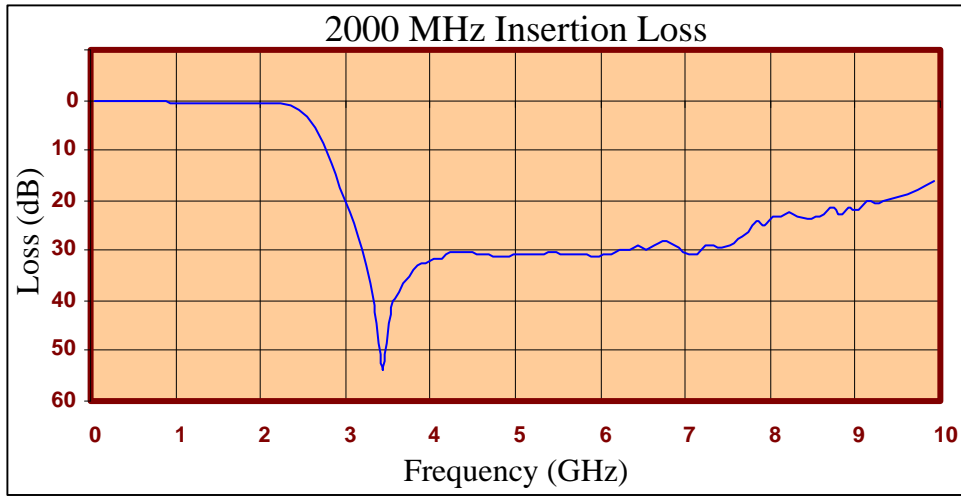
- +36dBm (4 Watts)
- Operating Temperature: -40°C to 85°C
- Storage Temperature: -55°C to 100°C



Crystek's new line of Low Pass Filters are designed in a rugged SMA housing. This filter line has excellent out-of-band rejection. Designed for Test Equipment and General Lab Use.

Rev C

Page 1 of 3





FREQ (MHz)	INSERTION LOSS (dB)	Male Return Loss (dB)	Female Return Loss (dB)
50.000	0.02	34.28	34.19
249.500	0.13	22.00	21.92
449.000	0.21	17.84	17.67
648.500	0.29	15.70	15.49
848.000	0.35	14.48	14.34
947.750	0.44	14.14	14.03
1047.500	0.43	13.96	13.88
1247.000	0.45	13.95	13.99
1446.500	0.52	14.34	14.53
1546.250	0.48	14.68	14.92
1646.000	0.59	15.08	15.39
1845.500	0.62	16.24	16.65
2045.000	0.60	19.59	19.84
2244.500	0.68	30.28	29.55
2444.000	1.97	8.81	9.16
2643.500	5.56	2.57	2.62
3042.500	22.37	0.66	0.50
3341.750	41.12	0.50	0.44
3641.000	38.14	0.38	0.51
4040.000	31.59	0.28	0.51
4339.250	30.49	0.34	0.48
4638.500	30.66	0.40	0.48
5037.500	30.95	0.46	0.57
5336.750	30.60	0.48	0.63
5636.000	30.70	0.48	0.63
6035.000	30.83	0.47	0.56
6334.250	29.76	0.44	0.49
6633.500	29.14	0.42	0.41
7032.500	30.67	0.36	0.35
7331.750	28.91	0.31	0.33
7631.000	27.53	0.26	0.34
8030.000	23.37	0.22	0.37
8329.250	23.17	0.23	0.38
8628.500	22.84	0.45	0.40
9027.500	22.01	0.88	0.41
9326.750	19.92	1.13	0.46
9626.000	18.63	1.19	0.52
9925.250	16.10	1.24	0.63

**Product Control:**

Crystek Part Number:	CLPFL-2000	Release Date:	04-Aug-2015
Revision Level:	C	Responsible:	K. Piotrowicz

Rev C
Page 3 of 3



## X-ON Electronics

Largest Supplier of Electrical and Electronic Components

*Click to view similar products for [Signal Conditioning](#) category:*

*Click to view products by [Crystek](#) manufacturer:*

Other Similar products are found below :

[MAPDCC0001](#) [MAPDCC0004](#) [PD0409J5050S2HF](#) [880157](#) [HHS-109-PIN](#) [DC1417J5005AHF](#) [AFS14A30-2185.00-T3](#) [AFS14A35-1591.50-T3](#) [DS-323-PIN](#) [B39321R801H210](#) [1A0220-3](#) [JP510S](#) [LFB212G45SG8C341](#) [LFB322G45SN1A504](#) [LFL182G45TC3B746](#) [SF2159E](#) [30057](#) [FM-104-PIN](#) [CER0813B](#) [MAPDCC0005](#) [3A325](#) [40287](#) [41180](#) [ATB3225-75032NCT](#) [BD0810N50100AHF](#) [BD2425J50200AHF](#) [C5060J5003AHF](#) [JHS-115-PIN](#) [JP503AS](#) [DC0710J5005AHF](#) [DC2327J5005AHF](#) [DC3338J5005AHF](#) [43020](#) [LFB2H2G60BB1C106](#) [LFL15869MTC1B787](#) [X3C19F1-20S](#) [XC3500P-20S](#) [10013-20](#) [SF2194E](#) [CDBLB455KCAX39-B0](#) [TGL2208-SM, EVAL](#) [RF1353C](#) [PD0922J5050D2HF](#) [1E1305-3](#) [1F1304-3S](#) [1G1304-30](#) [B0922J7575AHF](#) [2020-6622-20](#) [TP-103-PIN](#) [BD1222J50200AHF](#)