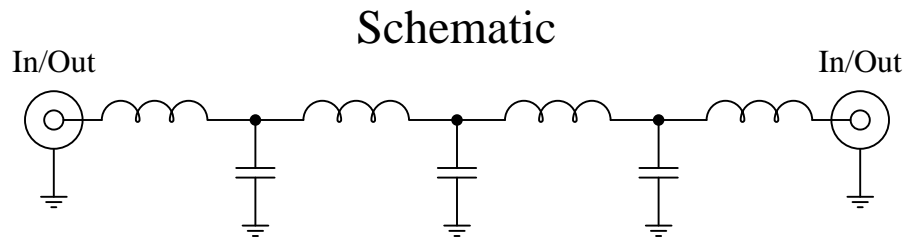


Part Number: CLPFL-2400

Low Pass Range
DC to 2400 MHz



Features:

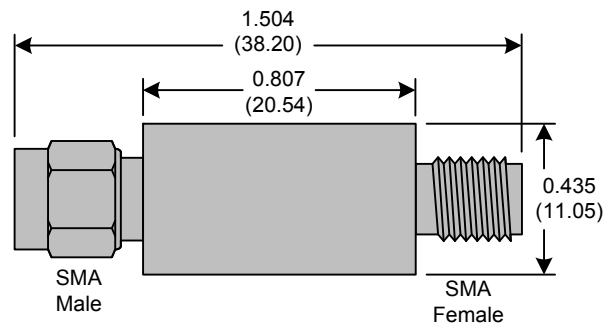
- 7th Order Butterworth Response
- 50Ω SMA Connectors

Applications:

- Test Equipment
- Lab Use

Maximum Ratings:

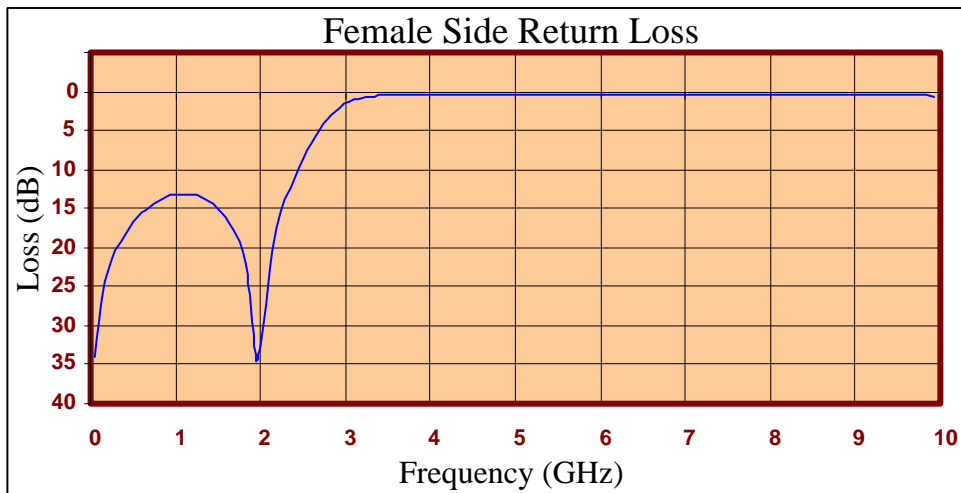
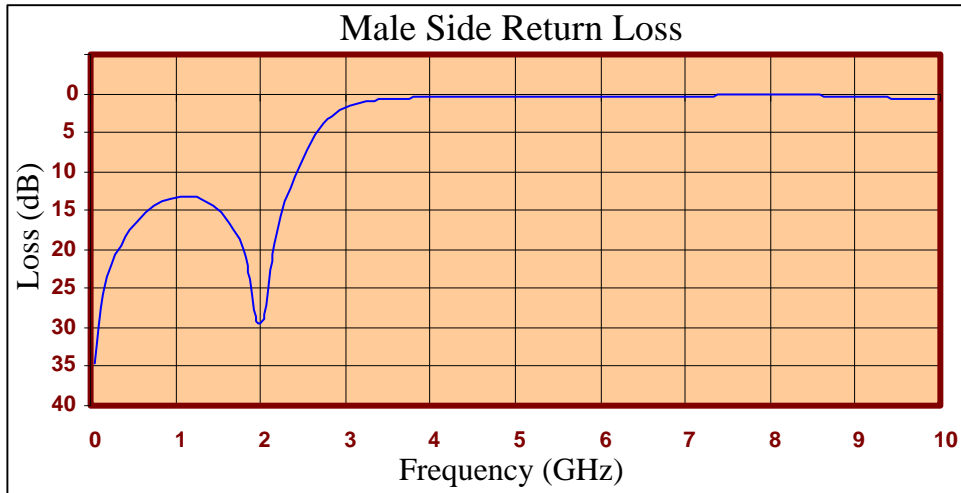
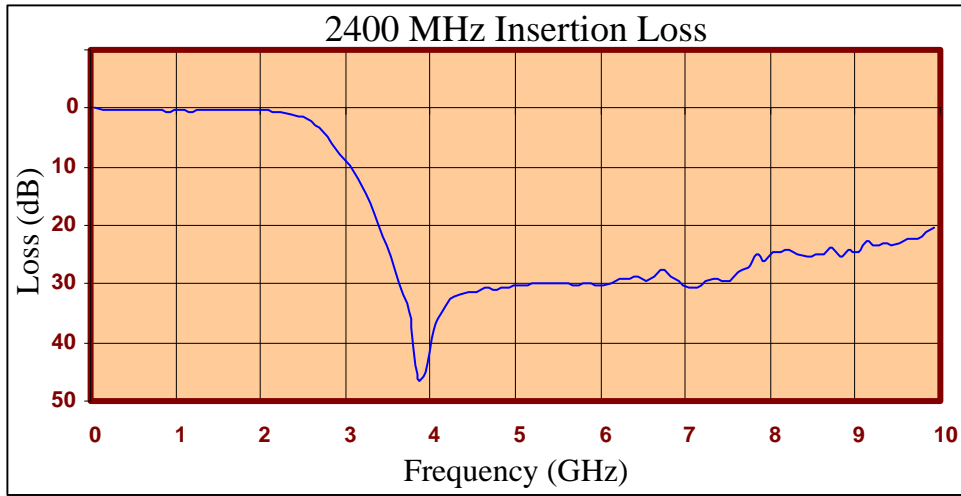
- +36dBm (4 Watts)
- Operating Temperature: -40°C to 85°C
- Storage Temperature: -55°C to 100°C



Crystek's new line of Low Pass Filters are designed in a rugged SMA housing. This filter line has excellent out-of-band rejection. Designed for Test Equipment and General Lab Use.

Rev C

Page 1 of 3





FREQ (MHz)	INSERTION LOSS (dB)	Male Return Loss (dB)	Female Return Loss (dB)
50.000	0.04	34.46	34.11
249.500	0.11	21.95	21.87
449.000	0.20	17.62	17.47
648.500	0.28	15.26	15.10
848.000	0.34	13.88	13.75
947.750	0.45	13.48	13.36
1047.500	0.42	13.28	13.17
1247.000	0.39	13.37	13.35
1446.500	0.39	14.31	14.41
1546.250	0.38	15.24	15.44
1646.000	0.41	16.64	16.98
1845.500	0.40	22.10	23.49
2045.000	0.40	29.01	29.04
2244.500	0.78	15.67	15.56
2444.000	1.41	9.46	9.69
2643.500	2.89	5.39	5.71
3042.500	9.67	1.52	1.40
3341.750	18.07	0.86	0.57
3641.000	29.86	0.66	0.48
4040.000	37.76	0.40	0.49
4339.250	31.96	0.34	0.43
4638.500	30.66	0.36	0.37
5037.500	30.34	0.41	0.41
5336.750	29.85	0.42	0.45
5636.000	30.01	0.42	0.47
6035.000	30.08	0.40	0.45
6334.250	29.13	0.38	0.40
6633.500	28.67	0.35	0.34
7032.500	30.80	0.30	0.30
7331.750	29.25	0.27	0.28
7631.000	28.07	0.24	0.31
8030.000	24.55	0.22	0.35
8329.250	24.94	0.20	0.39
8628.500	24.99	0.30	0.41
9027.500	24.73	0.42	0.42
9326.750	23.08	0.55	0.44
9626.000	22.45	0.59	0.47
9925.250	20.37	0.71	0.56

Product Control:

Crystek Part Number:	CLPFL-2400	Release Date:	04-Aug-2015
Revision Level:	C	Responsible:	K. Piotrowicz

Rev C
Page 3 of 3



X-ON Electronics

Largest Supplier of Electrical and Electronic Components

Click to view similar products for [Signal Conditioning](#) category:

Click to view products by [Crystek](#) manufacturer:

Other Similar products are found below :

[MAPDCC0001](#) [MAPDCC0004](#) [PD0409J5050S2HF](#) [880157](#) [HHS-109-PIN](#) [DC1417J5005AHF](#) [AFS14A30-2185.00-T3](#) [AFS14A35-1591.50-T3](#) [DS-323-PIN](#) [B39321R801H210](#) [1A0220-3](#) [JP510S](#) [LFB212G45SG8C341](#) [LFB322G45SN1A504](#) [LFL182G45TC3B746](#) [SF2159E](#) [30057](#) [FM-104-PIN](#) [CER0813B](#) [MAPDCC0005](#) [3A325](#) [40287](#) [41180](#) [ATB3225-75032NCT](#) [BD0810N50100AHF](#) [BD2425J50200AHF](#) [C5060J5003AHF](#) [JHS-115-PIN](#) [JP503AS](#) [DC0710J5005AHF](#) [DC2327J5005AHF](#) [DC3338J5005AHF](#) [43020](#) [LFB2H2G60BB1C106](#) [LFL15869MTC1B787](#) [X3C19F1-20S](#) [XC3500P-20S](#) [10013-20](#) [SF2194E](#) [CDBLB455KCAX39-B0](#) [TGL2208-SM, EVAL](#) [RF1353C](#) [PD0922J5050D2HF](#) [1E1305-3](#) [1F1304-3S](#) [1G1304-30](#) [B0922J7575AHF](#) [2020-6622-20](#) [TP-103-PIN](#) [BD1222J50200AHF](#)