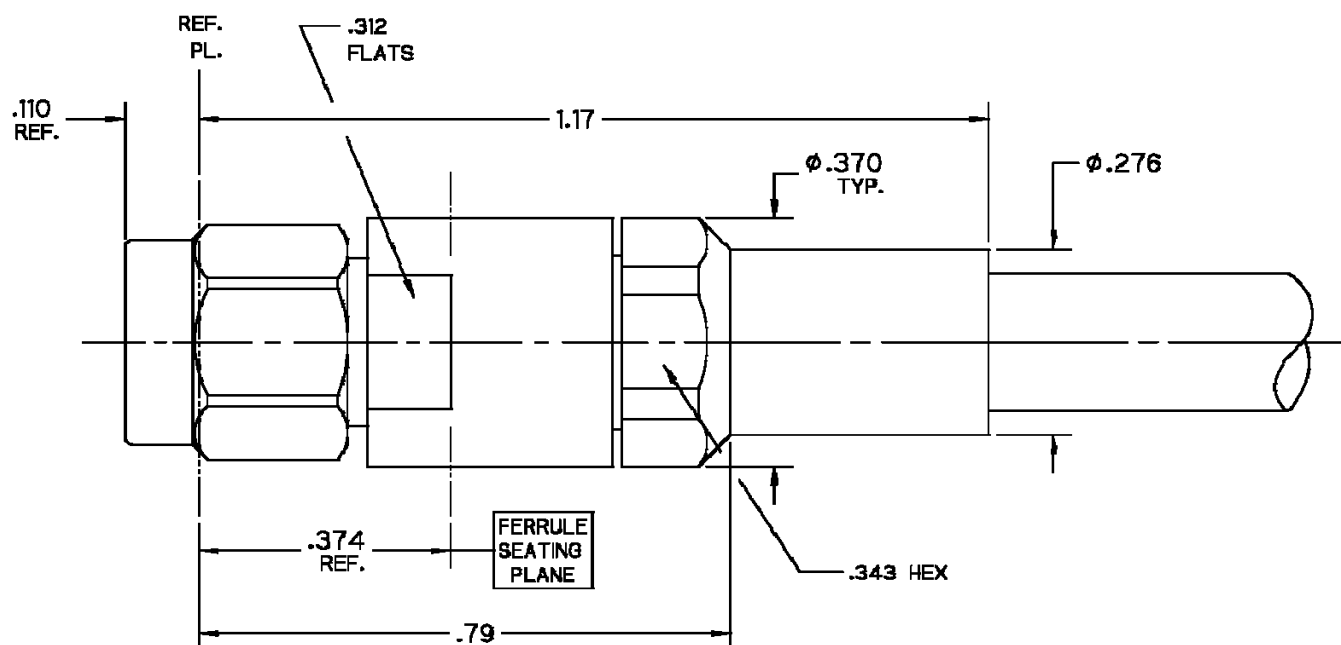


## 2.92mm Plug, Solder Clamp for Semflex HP190 Cable



### NOTES:

#### 1.0 Materials

- 1.1 Body, Coupling, and Clamp Nuts: Steel. Corrosion Resistant per ASTM-A582. UNS No. S30300.
- 1.2 Center Conductor: Beryllium Copper per ASTM-B196. UNS C17300.
- 1.3 Solder Ferrule: Brass per ASTM-B16. UNS C36000.
- 1.4 Lock Ring: Beryllium Copper per ASTM-B197. UNS C17200.
- 1.5 Gasket and O-Ring: Silicone Rubber per A-A-59588.
- 1.6 Dielectric Bead: Polyethylene Oxide (NORYL) per ASTM-D4349.
- 1.7 Cable Stop: Polyetherimide Thermoplastic (ULTEM 1000) per ASTM-D5205.

#### 2.0 Finishes

- 2.1 Center Contact and Solder Ferrule: Gold Plate per ASTM-B488 50 Microinches Min. thickness over Electrolytic Nickel Plate per ASTM-B689 50 Microinches Min. thickness.
- 2.2 Body, Coupling, and Clamp Nuts: Passivated per SAE-AMS-2700.
- 2.3 Gasket, O-Ring, Lock Ring, and Dielectrics: None.

#### 3.0 Interface: per CC-2.92mm-Pin.



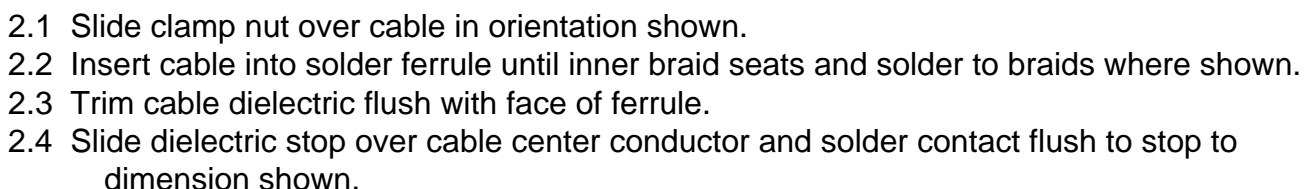


Diagram illustrating the cross-sectional view of a cable assembly. The assembly consists of a central HP190 CABLE surrounded by a DIELECTRIC layer. The dimensions are specified as follows:

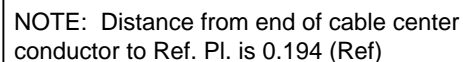
- Overall diameter:  $\pm .025$
- Inner diameter (cable):  $\pm .020$
- Outer diameter (dielectric):  $\pm .010$
- Length of the dielectric layer:  $\pm .335$
- Length of the cable:  $\pm .175$
- Length of the HP190 CABLE:  $\pm .230$

The assembly is labeled with "ROUND BRAID" and "HP190 CABLE".

1.1 Trim Cable as shown.



Step 2 | dimension shown.



Step 3	25-35 in-lbs.
--------	---------------

Crystek Part Number:	CS-FM-MS	Release Date:	04-Jan-11
Revision Level:	A	Responsible:	K. Piotrowicz



**CRYSTEK**  
CORPORATION

12730 COMMONWEALTH DRIVE • FORT MYERS, FLORIDA 33913  
PHONE: 239-561-3311 • 800-237-3061  
FAX: 239-561-1025 • [WWW.CRYSTEK.COM](http://WWW.CRYSTEK.COM)

## X-ON Electronics

Largest Supplier of Electrical and Electronic Components

*Click to view similar products for* [RF Connectors](#) / [Coaxial Connectors](#) *category:*

*Click to view products by* [Crystek](#) *manufacturer:*

Other Similar products are found below :

[8915-1511-000](#) [89674-0827](#) [6001-7071-019](#) [6002-7051-003](#) [6002-7551-202](#) [6059674-1](#) [619550-1](#) [630059-000](#) [M39030/3-01N](#) [6500-7071-046](#) [6769](#) [CX050L2AQ](#) [7002-1541-010](#) [7002-1542-011](#) [7004-1512-000](#) [7009-1511-004](#) [7010-1511-000](#) [7029-1511-060](#) [7101-1541-010](#) [7101-1571-002](#) [7145-1521-002](#) [7203-1571-003](#) [7209-1511-011](#) [7210-1511-015](#) [7210-1511-019](#) [73137-5015](#) [73216-2241](#) [73404-2300](#) [7405-1521-005](#) [7405-1521-802](#) [8527](#) [8547](#) [FS11V](#) [877931](#) [8808-1511-001](#) [9049-9513-000](#) [9074-9513-000](#) [9101-9573-002](#) [910A205F](#) [9130-9573-002](#) [PL11SC-026](#) [PL375-33](#) [PL40-5](#) [PL74C-221](#) [PL75MC-217](#) [PL803-7](#) [980-8666-005](#) [1200690078](#) [1-201144-1](#) [R107003010W](#)