

## CUSO33xx Model

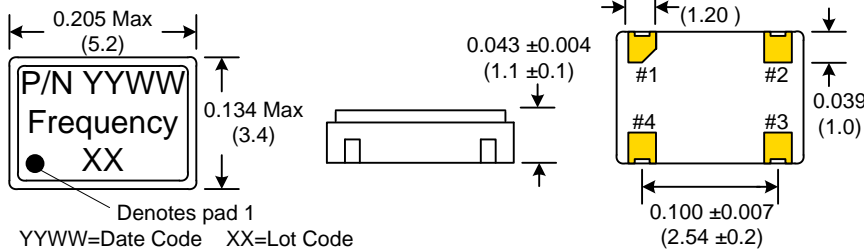
3.2x5.0 mm SMD, 3.3V, HCMOS

<b>Frequency Range:</b>	1.544 MHz to 160.000 MHz
<b>Frequency Stability:</b>	±25ppm to ±100ppm
<b>Temperature Range:</b>	
Operating:	0°C to 70°C
(Option M)	-20°C to 70°C
(Option E)	-40°C to 85°C
Storage:	-45°C to 120°C
<b>Input Voltage:</b>	3.3V ± 0.3V
<b>Input Current:</b>	<30 MHz 4-10mA (freq. dependent) >31 MHz 10-20mA (freq. dependent)
Standby Mode:	10uA Max
<b>Output:</b>	HCMOS
Symmetry:	45/55% Max @ 50% Vdd
Rise/Fall Time:	2ns Typical, 4ns Max
Logic:	"0" = 10% Vdd Max "1" = 90% Vdd Min
Load:	15pF Max
<b>Jitter:</b>	12kHz to 20MHz 0.5ps Typical, 1ps Max RMS
<b>Aging:</b>	<3ppm 1 <sup>st</sup> year, 1ppm every year thereafter

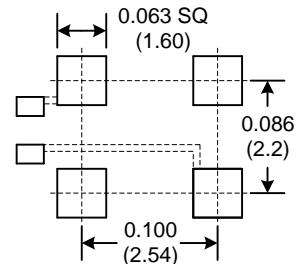


Designed to meet application requirements for smaller layout areas. The CUSO (Crystek Ultra Small Oscillator) Series utilizes fundamental and 3<sup>rd</sup> overtone crystal design thereby providing the proven performance of our larger 5x7mm package. Standby mode and Power-save Pull-up Resistance is standard. Packaged on tape and reel in quantities of 1K.

Dimensions inches (mm)  
All dimensions are Max unless otherwise specified.

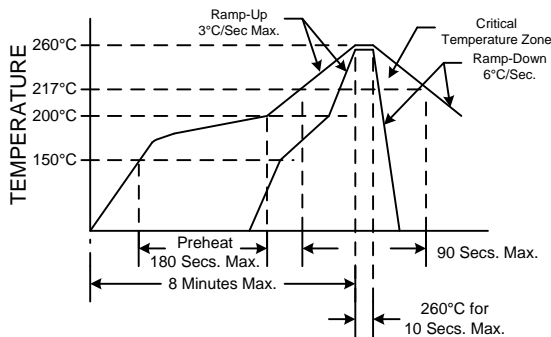


### SUGGESTED PAD LAYOUT

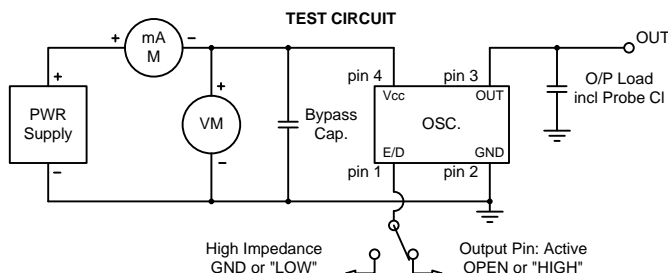


0.01uF Bypass Capacitor Recommended

### RECOMMENDED REFLOW SOLDERING PROFILE



NOTE: Reflow Profile with 240°C peak also acceptable.



### Crystek Part Number Guide

Example: CUSO3392-44.736  
Example: CUSOM3392-44.736  
Example: CUSOE3392-44.736

Temperature			Frequency Stability
0/70°C	-20/70°C	-40/85°C	
CUSO3390	CUSOM3390	CUSOE3390	±100ppm
CUSO3392	CUSOM3392	CUSOE3392	±50ppm
CUSO3391	CUSOM3391	CUSOE3391	±25ppm

Enable/Disable		
Function pin 1	Output pin	Oscillator State
Open	Active	Normal Operation
"1" level 0.7xVdd Min	Active	Normal Operation
"0" level 0.3xVdd Max	High Z	Stopped

Rev: H

Date: 23-Feb-2016

Page 1 of 1

Specifications subject to change without notice.

## X-ON Electronics

Largest Supplier of Electrical and Electronic Components

*Click to view similar products for [Standard Clock Oscillators](#) category:*

*Click to view products by [Crystek](#) manufacturer:*

Other Similar products are found below :

[601252](#) [F335-25](#) [F535L-33.333](#) [F535L-50](#) [ECS-2018-160-BN-TR](#) [MXO45HS-2C-66.6666MHZ](#) [SiT1602BI-22-33E-50.000000E](#) [SiT8209AI-32-33E-125.000000](#) [SIT8918AA-11-33S-50.000000G](#) [SM4420TEV-40.0M-T1K](#) [F335-24](#) [F335-40](#) [F535L-10](#) [F535L-12](#) [F535L-16](#) [F535L-24](#) [F535L-27](#) [F535L-48](#) [PE7744DW-100.0M](#) [CSX-750FCC14745600T](#) [ASF1-3.686MHZ-N-K-S](#) [XO57CTECNA3M6864](#) [ECS-2100A-147.4](#) [601251](#) [EP16E7E2H26.000MTR](#) [SIT8918AA-11-33S-16.000000G](#) [XO3003](#) [9120AC-2D2-33E212.500000](#) [9102AI-243N25E100.00000](#) [8208AC-82-18E-25.00000](#) [ASDK2-32.768KHZ-LR-T3](#) [8008AI-72-XXE-24.545454E](#) [8004AC-13-33E-133.33000X](#) [AS-4.9152-16-SMD-TR](#) [ASFL1-48.000MHZ-LC-T](#) [SIT8920AM-31-33E-25.0000](#) [DSC1028DI2-019.2000](#) [9121AC-2C3-25E100.00000](#) [9102AI-233N33E100.00000X](#) [9102AI-233N25E200.00000](#) [9102AI-232H25S125.00000](#) [9102AI-133N25E200.00000](#) [9102AC-283N25E200.00000](#) [9001AC-33-33E1-30.000](#) [3921AI-2CF-33NZ125.000000](#) [5730-1SF](#) [PXA000010](#) [8003AI-12-33S-40.00000Y](#) [1602BI-13-33S-19.200000E](#) [8208AI-2F-18E-25.000000X](#)