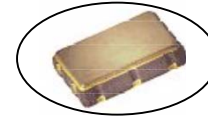


CMOS

Voltage Controlled Crystal Oscillator

CVHD-037X Model 5x7 mm SMD, 3.3V, CMOS

Frequency Range:	30.000 to 170.000 MHz
Operating Temperature Range:	-40°C to 85°C
Storage Temperature Range:	-45°C to 90°C
Input Voltage:	3.3V ± 5%
Control Voltage:	1.65V ± 1.65V
Input Current:	15mA Max
Output:	CMOS
Symmetry:	45/55% Max @ 50% Vdd
Rise/Fall Time:	3ns Max @ 10% to 90%
Pullability APR:	±50ppm Min
Linearity:	10%
Load:	15pF Max
Logic "1" Level:	0.9×Vdd Min
Logic "0" Level:	0.1×Vdd Max
Input Impedance:	5-10 MΩ
Enable Delay Time:	2ms Max
Disable Delay Time:	200ns Max
Phase Noise (Typical):	
10 Hz Offset:	-75 dBc/Hz
100 Hz Offset:	-100 dBc/Hz
1 kHz Offset:	-130 dBc/Hz
10 kHz Offset:	-145 dBc/Hz
100 kHz Offset:	-155 dBc/Hz
1 MHz Offset:	-160 dBc/Hz
10 MHz Offset:	-160 dBc/Hz



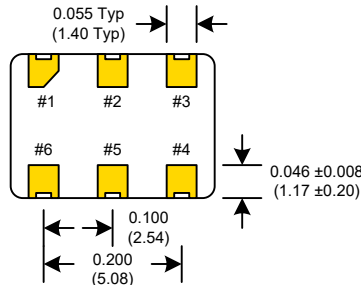
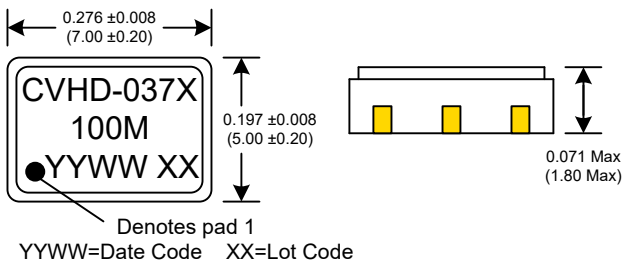
Standard Frequencies (MHz)
80.000
100.000
122.880
125.000

Mechanical:	
Shock:	MIL-STD-883, Method 2002, Condition B
Solderability:	MIL-STD-883, Method 2003
Vibration:	MIL-STD-883, Method 2007, Condition A
Solvent Resistance:	MIL-STD-202, Method 215
Resistance to Soldering Heat:	MIL-STD-202, Method 210, Condition I or J
Environmental:	
Thermal Shock:	MIL-STD-883, Method 1011, Condition A
Moisture Resistance:	MIL-STD-883, Method 1004

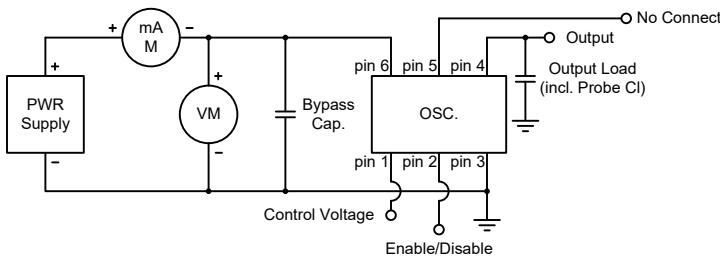
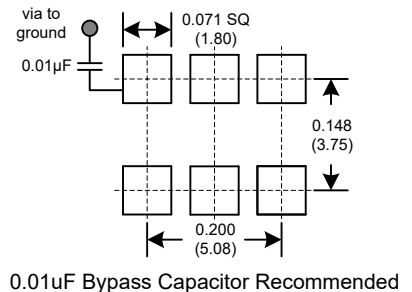
Part Number Example: CVHD-037X-100.000 = 3.3V, ±50ppm APR, 100 MHz

Dimensions inches (mm)

All dimensions are Max unless otherwise specified.



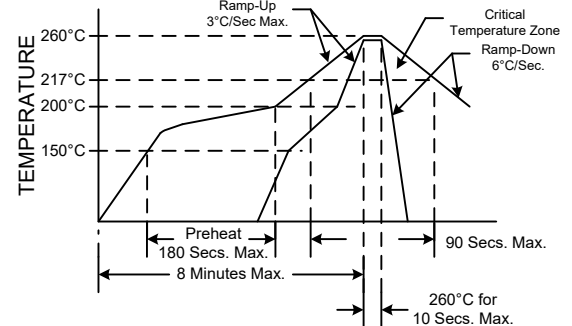
SUGGESTED PAD LAYOUT



PIN	Connection
1	Cont. Volt
2	E/D
3	GND
4	Output
5	NC
6	Vcc

Enable/Disable	
Function pin 2	Output pin
Open	Active
"1" level 0.7×Vdd Min	Active
"0" level 0.3×Vdd Max	High Z

RECOMMENDED REFLOW SOLDERING PROFILE



NOTE: Reflow Profile with 240°C peak also acceptable.

Available on 16mm Tape and Reel in quantities of 1,000 pcs.

Rev: H
Date: 18-Dec-2019
Page 1 of 1

Crystek Corporation reserves the right to make changes to its products and/or information contained herein without notice. No liability is assumed as a result of its use or application.

X-ON Electronics

Largest Supplier of Electrical and Electronic Components

Click to view similar products for [VCXO Oscillators](#) category:

Click to view products by [Crystek](#) manufacturer:

Other Similar products are found below :

[3808AI-DF-33NG-80.0000](#) [SIT3808AI-CF-33EM-50.000000X](#) [603281](#) [YNETHE125](#) [FRSONT019](#) [SiT3701AC-43-33C-10.00000X](#)
[315LB3I1250T](#) [CVSS-945-125.000](#) [VX-501-0245-160M0](#) [CVHD-950-122.880](#) [CVHD-950-80.000](#) [CVHD-950X-100.000](#) [CVPD-920-100.000](#) [ASG-P-V-A-1.000GHZ](#) [ECXV-P37C2M-640.000](#) [CVHD950X-125.000](#) [CVHD-957-22.57920](#) [ECXV-P37C2N-155.520](#) [ECXV-P37C2N-56.000](#) [ECXV-P37C2N-184.320](#) [ECXV-P37C2N-155.000](#) [ECXV-P35C2N-155.520](#) [LFVCXO067515Bulk](#) [ASG-D-V-A-1.000GHZ](#)
[ASG-D-V-A-491.520MHz](#) [CVHD-950-74.25](#) [CVPD-920-74.25](#) [ABLNO-V-92.160MHZ](#) [ABLNO-V-120.000MHZ](#) [ABLNO-V-80.000MHZ](#)
[ABLJO-V-100.000MHZ](#) [ABLJO-V-120.000MHZ](#) [ABLJO-V-122.880MHZ](#) [ABLJO-V-150.000MHZ](#) [ABLJO-V-155.520MHZ](#) [ABLJO-V-200.000MHZ](#) [ABLJO-V-200.000MHZ-T](#) [ABLJO-V-96.000MHZ](#) [ABLNO-V-100.000MHZ](#) [ABLNO-V-100.000MHZ-T2](#) [ABLNO-V-120.000MHZ-T2](#) [ABLNO-V-122.880MHZ](#) [ABLNO-V-125.000MHZ](#) [ABLNO-V-156.250MHZ](#) [ABLNO-V-96.000MHZ](#) [ABLNO-V-96.000MHZ-T2](#) [ABLNO-V-104.000MHZ](#) [ABLNO-V-125.000MHZ-T2](#) [ABLNO-V-155.520MHZ](#) [ASG2-D-V-A-1000.000MHZ](#)