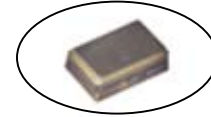


Temperature Compensated Crystal Oscillator Voltage Trim

CVT32 Model

3.2x5.0 mm SMD, 3V, TCVCXO

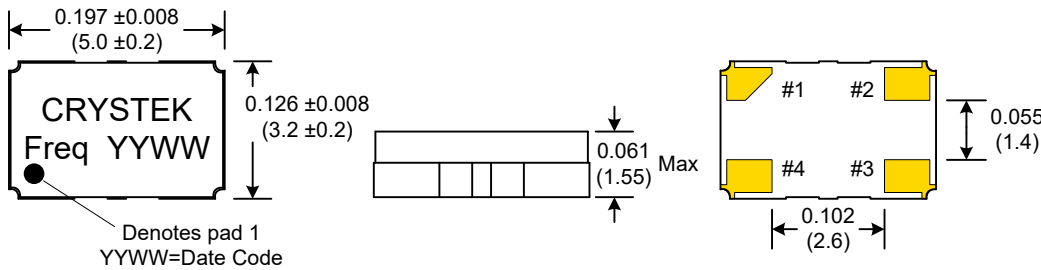
Frequency Range:	10 MHz to 30 MHz
Calibration Tolerance:	±1.5ppm
Frequency Stability:	±2.5ppm
Temperature Range:	-20°C to 80°C
Storage:	-40°C to 90°C
Input Voltage:	3.0V ±10%
Input Current:	1.2mA Typical, 2mA Max
Output:	0.8Vp-p Min
Waveform:	Clipped Sine
Load:	6-15 kohm // 2-10pF
Voltage Control:	1.5V ± 1.0V
Vcont Trim.	±4ppm Min, ±13ppm Max
Harmonics:	-9 dBc Max
Phase Noise:	10Hz offset -83 dBc/Hz Max
	100Hz offset -115 dBc/Hz Max
	1kHz offset -135 dBc/Hz Max
	10kHz offset -140 dBc/Hz Max
Aging:	1ppm Max per year



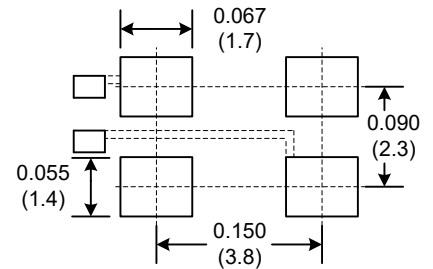
Designed to meet today's requirements for precision operation and small layout applications. Temperature compensation is accomplished through digital technology. Standard packaging is 1k tape and reel.

Dimensions inches (mm)

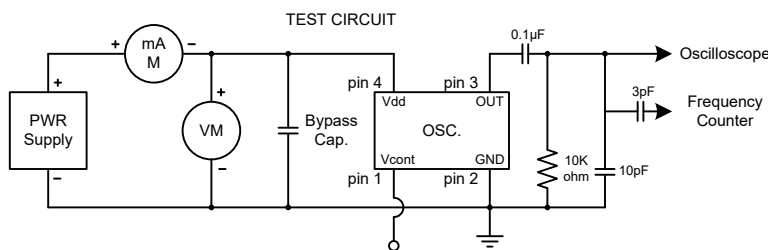
All dimensions are Max unless otherwise specified.



SUGGESTED PAD LAYOUT

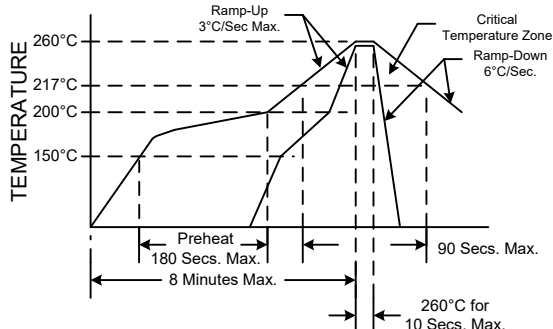


0.1uF Bypass Capacitor Recommended



PIN	Function
1	Vcont
2	GND
3	OUT
4	VDD

RECOMMENDED REFLOW SOLDERING PROFILE



NOTE: Reflow Profile with 240°C peak also acceptable.

Crystek Part Number Guide

Part Number	Frequency Stability
CVT32-Frequency	± 2.5ppm
Example: P/N CVT32-19.680MHZ = 3.0V Input Voltage ±1.5ppm Calibration Tolerance ±2.5ppm Frequency Stability -20°C to 80°C Operating Temp. Volt. Trim, Clipped Sinewave	

Note* Not Recommended for ultrasonic wash

Crystek Corporation reserves the right to make changes to its products and/or information contained herein without notice. No liability is assumed as a result of its use or application.

Rev: M

Date: 17-Jun-2021

Page 1 of 1

X-ON Electronics

Largest Supplier of Electrical and Electronic Components

Click to view similar products for [TCXO Oscillators](#) category:

Click to view products by [Crystek](#) manufacturer:

Other Similar products are found below :

[SiT5000AI-3D-33E0-10.000000X](#) [THD3031035LK280005-10.0M](#) [AST3TDATAACJ5-10.0000MHz](#) [AST3TDATAACJ5-20.0000MHz](#)
[AST3TDA53TACJ2-19.2000MHz](#) [AST3TDA53TACJ2-38.8800MHz](#) [AST3TDATAACJ5-19.2000MHz](#) [AST3TDATAACJ5-38.8800MHz](#)
[SiT5155AI-FK-33E0-10.000000F](#) [CVT32-10.000](#) [SIT5356AI-FQ-33E0-25.000000X](#) [SIT5357AI-FQ-33N0-100.000000X](#) [DS32KHZSN+T&R](#)
[XTCLH25M000THJA0P0](#) [LFTCXO075793Cutt](#) [LFTCXO077229Cutt](#) [LFPTXO000002Bulk](#) [LFTCXO077228Cutt](#) [LFTCXO077230Cutt](#)
[LFTCXO075792Cutt](#) [AST3TQ53-T-10.000MHz-5-C](#) [ATX-11-F-26.000MHz-F05-T](#) [ATX-11-F-27.000MHz-F05-T](#) [ATX-12-F-32.000MHz-](#)
[F05-T](#) [ATX-13-F-26.000MHz-F05-T](#) [I538-2O7- 25.000 MHz](#) [I537-2O7- 39.000 MHz](#) [I537-2O7- 25.000 MHz](#) [ECS-TXO-2016-33-320-TR](#)
[ECS-TXO-2016-33-120-TR](#) [ECS-TXO-2016-33-250-TR](#) [ECS-TXO-2016-33-200-TR](#) [ECS-TXO-20CSMV-AC-260-AY-TR](#) [TG2016SMN](#)
[26.0000M-MCGNNM0](#) [TG2016SMN 25.0000M-MCGNNM0](#) [TG2016SMN 25.0000M-MCGNNM3](#) [TG2520SMN 16.0000M-MCGNNM0](#)
[TG2520SMN 25.0000M-MCGNNM0](#) [TG2520SMN 40.0000M-ECGNNM0](#) [TG2520SMN 24.0000M-ECGNNM0](#) [TG2520SMN 20.0000M-](#)
[MCGNNM0](#) [TG2520SMN 30.0000M-ECGNNM0](#) [TG2520SMN 30.000M-MCGNNM0](#) [TG2520SMN 27.0000M-MCGNNM3](#) [TG2520SMN](#)
[32.0000M-MCGNNM3](#) [TG2520SMN 32.0000M-ECGNNM3](#) [LFPTXO000001Bulk](#) [LFTCXO063711BULK](#) [LFTCXO063713BULK](#)
[LFTCXO063715BULK](#)