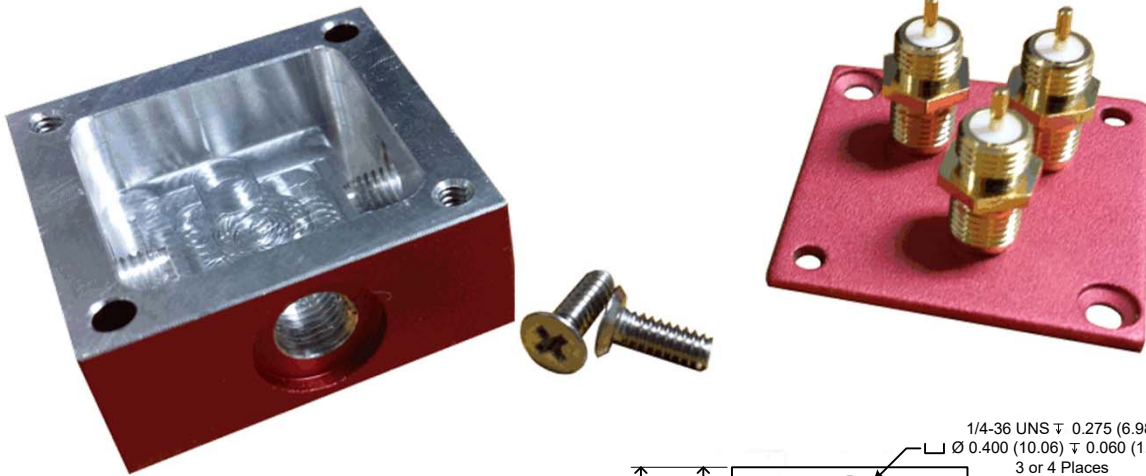


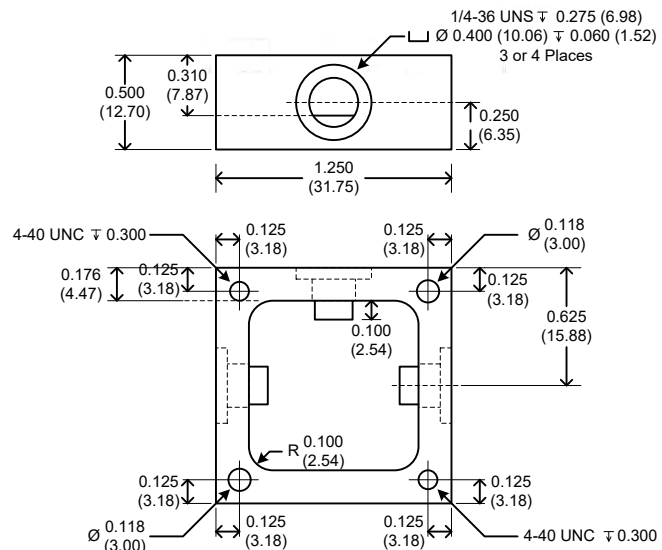
CONNECTORIZED  
ENCLOSURE  
ENHANCED DURABILITY AND  
EASY INTEGRATION

Part Numbers:  
RedBox-Kit-3 (3 Port)  
RedBox-Kit-4 (4 Port)



Notes:

- 1) Material: Alodine Aluminum
- 2) Color: Red Alodine
- 3) Dimensions are post alodined
- 4) Dimensions are Inches (mm)
- 5) Tolerance on all dimensions is within  $\pm 0.005$  (0.127)
- 6) Depth of pocket is 0.310 (7.87)
- 7) Option with 4 threaded holes available
- 8) Loctite 262 is recommended to secure the SMAs to the housing.  
Please follow Loctite's instructions



Crystek's robust alodined aluminum enclosure is the perfect solution to any small electronic enclosure need. The robust aluminum enclosure (1.25" × 1.25" × 0.59") with SMA connectors allows for implementation into many applications. This enclosure is offered in two styles with three or four SMA connectors provided. The enclosure is drilled and tapped to accept (1/4 × 36 UNA) threaded fittings and accepts a PCB thickness of 0.031" for exact center pin connection.

**Product Control:**

Crystek Part Number:	RedBox-Kit-3	Release Date:	29-Jul-2020
Revision Level:	B	Responsible:	C. Vales

Crystek Corporation reserves the right to make changes to its products and/or information contained herein without notice. No liability is assumed as a result of its use or application.

## X-ON Electronics

Largest Supplier of Electrical and Electronic Components

*Click to view similar products for [Electrical Enclosures](#) category:*

*Click to view products by [Crystek](#) manufacturer:*

Other Similar products are found below :

[120-401](#) [120-905](#) [120-909](#) [120-403](#) [130-004](#) [MR-25L+](#) [30-8739](#) [PIP-11774SCREW](#) [30-9715](#) [30-9777-BU](#) [105-905](#) [110-902](#) [110-901](#)  
[A16N12BLP](#) [110-406](#) [110-401](#) [110-404](#) [120-405](#) [34861601](#) [106-009](#) [106-505](#) [105-405](#) [111-005](#) [127-909](#) [106-502](#) [130-503](#) [127-455](#)  
[9511150](#) [9511017](#) [9820011](#) [NSYTDB5PL](#) [137-455](#) [130-001](#) [105-904](#) [120-404](#) [137-005](#) [130-505](#) [127-406](#) [AB 1,5.0](#) [AB2.0](#) [ABM.0](#)  
[73345601](#) [F-MP](#) [H-MP](#) [M-MP](#) [PAT 12040](#) [2461000](#) [9121230](#) [79541301](#) [19001001](#)