

编码器规格书

ENCODERS SPECIFICATIONS

适用型号 : ED16-D 系列
 APPLICABLE MODELS: ED16-D Series

一 构造 CONSTRUCTION

形状,寸法,依照图面规定

外观 各部应良好无锈蚀、裂痕、电镀不良现象
 APPEARANCE: EVERY PART SHOULD BE FINISHED NOT TO EXIST RUST
 FLAW CRACK AND PLATING

二 机械的性能 (Mechanical characteristics)

ITEMS	SPECIFICATION
全回转角度: Total rotational angle,	360°
回转力度: Rotational torque	3~24mN.m 30~240gf.cm
轴押引强度: Push-pull strength	50N/5.1Kgf max
C.C.位置: Click position	<input type="checkbox"/> 0 <input type="checkbox"/> 24 detent

三 电气的性能 (Electrical characteristics)

ITEMS	SPECIFICATION
定格电力: Ratings	5V DC.0.5mA
最高使用电流: Maximum operating voltage	5mA
绝缘抵抗: Insulation resistance	100MΩ min. at 50V DC
耐电压: Voltage proof	50V AC
使用环境温度: Usage environment temperature	-20°C~+70°C

滑动杂音:
Slider noise (突跳 Bounce) $t1, t3 \leq 3ms$ (测定条件:回转速度 360° /s Test conditions 360° /s)
 $t2 \leq 2ms$

输出信号和回转方向:
Output signal and Rotational direction

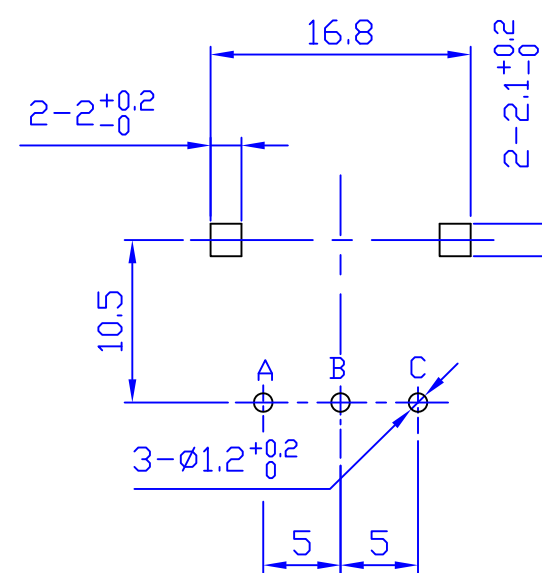
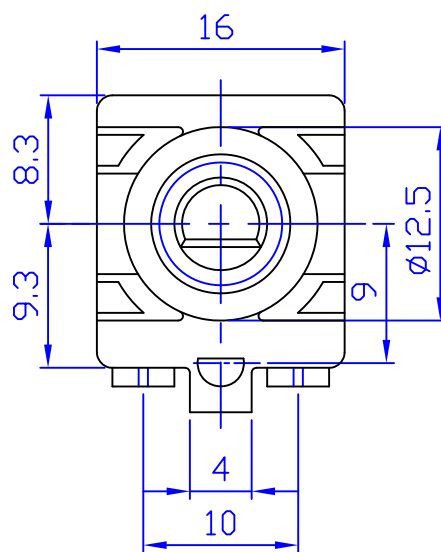
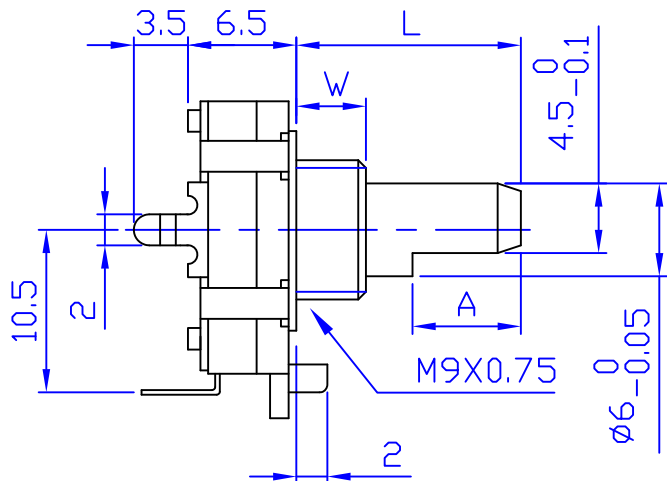
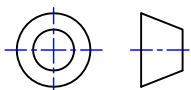
A signal: OFF, ON
 B signal: (square wave)
 定位安定点
 Detent stability point
 顺时针方向
 C.W. direction

四 开关性能 (Push-on switch specifications)

开关回路: Switch circuit	单极单投 single pole and single throw(push on)
开关移动量: (mm) Travel of switch	0.5 ^{+0.4} _{-0.3}
开关作动力: Operating force of switch	6±3 N / 600±300gf.cm
定格电力: Ratings	DC5V 10mA(最小定格 DC5V 1mA) (minimum ratings DC 5V 1mA)
接触抵抗: Contact resistance	初期 100mΩ 寿命后 200 mΩ first period:100mΩ ,200mΩ after the end of useful life is reached
负荷寿命特性: Operating life	20,000 cycles min.

东莞市长泰尔电子有限公司
 DONG GUAN CHANG TAI ER ELECTRONICS CO.,LTD

制作 Approved	审核 Examine	核准 Approve

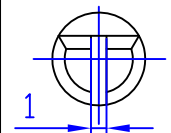
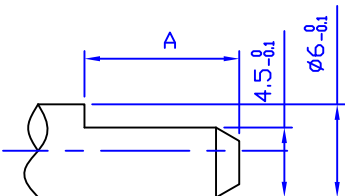


Mounting hole detail

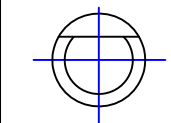
轴的类型:

F □ Shaft Style

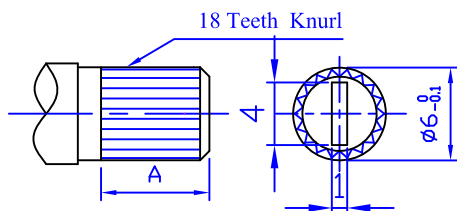
FA Shaft Style



FB Shaft Style



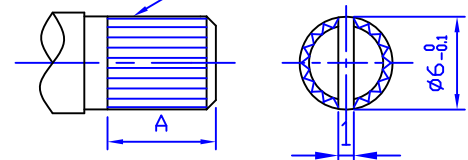
TB Shaft Style



L	15	20	25			
A	7	12	12			

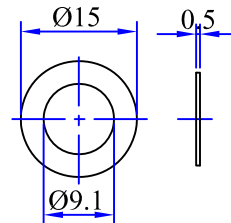
KA Shaft Style

18 Teeth Knurl

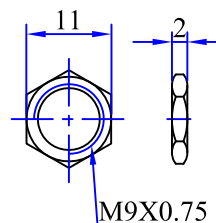


L	15	20	25			
A	6.5	11.5	14			

Washer垫圈(可选件)



Nut螺母(可选件)



product code	W
ED161120	5
ED161220	7
ED161320	10
ED161B20 轴套为塑胶料	7

东莞市长泰尔电子有限公司

未注尺寸公差	比例	2:1	版本	1.0	设计	审核	批准
L ≤ 1.0时 ±0.1	品名	ED161编码器组立图					
1.0 < L ≤ 10时 ±0.3	图号	ED161□20-					
10 < L ≤ 30时 ±0.5							
30 < L ≤ 100时 ±1.0							

X-ON Electronics

Largest Supplier of Electrical and Electronic Components

Click to view similar products for [Coded Rotary Switches](#) category:

Click to view products by [CTR](#) manufacturer:

Other Similar products are found below :

[PT65503RT](#) [Y36D02243FPLFT](#) [RTAP31S12WFLSP](#) [MADR-16H1](#) [GSER-10](#) [6KF001B-3S10R4-0](#) [EC11E153442W](#) [EC11E1534441](#) [SC-2110](#) [SD-2010TB](#) [MER-16H](#) [EDR-08](#) [USR-10](#) [FSR-08](#) [FSR-04S](#) [ESR-16](#) [HAMR-10S](#) [SDR-10H](#) [QSR-16H](#) [HAMR-16](#) [FDR-04S](#) [EDR-16S](#) [ESR-10S](#) [QDR-08H1](#) [TDR-04](#) [EDR-08S](#) [ESR-16H](#) [QDR-10](#) [EDR-10S](#) [QSR-06S](#) [ESR-08S](#) [EC11E156040N](#) [EC11B15243DC](#) [EC35AH220501](#) [EC18AGB20406](#) [EC11E09244C3](#) [EC11G1534414](#) [EC11E156T402](#) [EC60A1520405](#) [EC11E1564454](#) [EC11J0925501](#) [EC11E15204B1](#) [EC11E1564439](#) [EC50A0920403](#) [ED103180-FE14.5S7.5-A16-1010](#) [ED08E42S-FE15C7.0-A16-1020](#) [ED08C030-FE18C9.0-A16-1002X](#) [ED08C210-FE18A6.0-A16-1002](#) [ED08C110-FE18S9.0-A16-1040](#) [ED08C150-BM20S6.0-A16-1026](#)