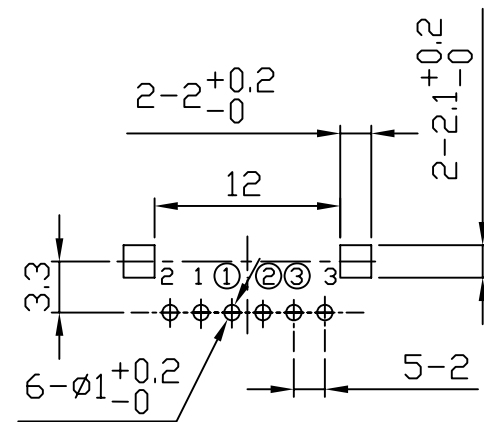
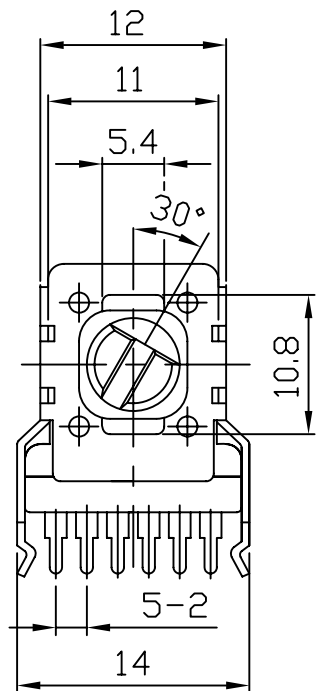
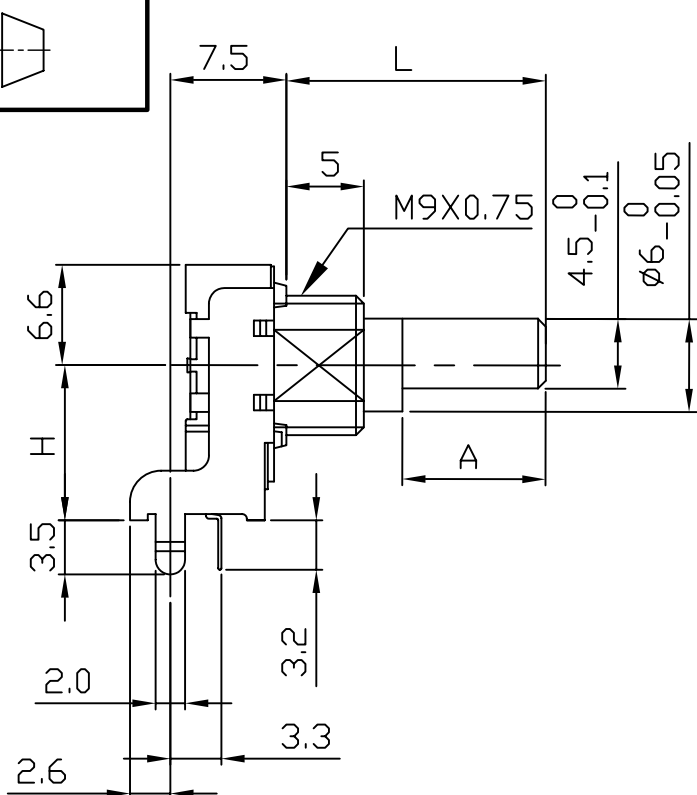
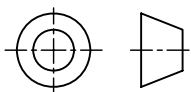


电位器规格书

POTENTIOMETER SPECIFICATIONS

1 一般事项 General information	
1-1 适用型号 Applicable models	R111 系列 R111 Serial
1-2 使用环境温度 Usage environment temperature	<input checked="" type="checkbox"/> - 10℃ ~ + 70℃ <input type="checkbox"/> - 20℃ ~ + 70℃
1-3 保存环境温度 Storage environment temperature	<input checked="" type="checkbox"/> - 20℃ ~ + 70℃ <input type="checkbox"/> - 40℃ ~ + 70℃
1-4 测试条件 Test condition	温度: 5~35℃, 湿度: 45~85%HR Temperature: 5~35℃, Moisture: 45~85% HR
1-5 环保要求 Environmental requisition	本产品符合 RoHS 指令 This product is compliant with RoHS Directive
1-6 耐焊接热 Soldering heat-resistance	1、手工焊接温度最高 350℃ ± 5℃, 3 秒; 2、自动焊接温度最高 260℃ ± 5℃, 3 秒; 基板表面预热温度最高 100℃, 1 分钟以内; 3、以上过程均保证在 1 到 2 次; 4、不适用回流焊。 1. Soldering iron Max ,350℃ ± 5℃ at 3 sec. 2. Auto soldering 260℃ ± 5℃ max. at 3 sec. Preheating temperature of board surface: 100℃ max. at within 1 minutes. 3. To guarantee the above process at 1 or 2 times. 4. No apply the reflow soldering.
1-7 原产地 Country of origin	中国 China
2 构造 Construction	
2-1 外观 Appearance	各部件应完整, 无锈蚀、裂痕、电镀不良 Every part should finished, not exist rust flaw crack and bad plating
2-2 寸法 Measurements	依照图面规定 Under conditions prescribed by design drawing.
3 机械性能 Mechanical characteristics	
3-1 全回转角度 Total rotational angle	300° ± 10°
3-2 回转力矩 Rotational torque	20~200gf.cm (旋转速度: 60° /1 秒) 20~200gf.cm (Rotational velocity : 60° /1 Sec.)
3-3 CC 脱出力 Detent torque	40~250gf.cm
3-4 CC 点数 Detent quantity	<input checked="" type="checkbox"/> 0 <input type="checkbox"/> _____

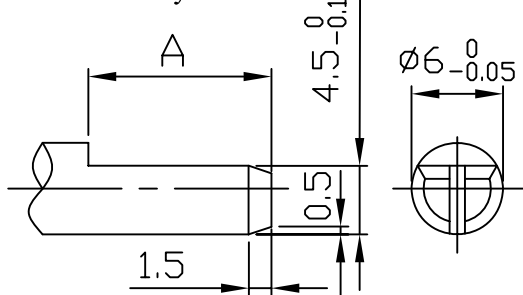
3-5 回转止动强度 Rotational stopper strength	≥3Kgf.cm			
3-6 轴压引强度 Pull-Push Strength of Shaft	≥5Kgf			
3-7 螺母锁紧强度 Nut tightening strength	≥8Kgf.cm *只适用带轴套的型号 Apply the model have bushing only.			
3-8 轴摇晃度 Shaft wobble	在单个轴芯顶端施加 250gf，轴径向偏移量小于：0.7*轴长 L 尺寸/20mm On the tip of the single shaft exert 250gf，Shaft radial deviant be smaller than: 0.7*shaft long L size/20mm			
4 电气性能 Electrical characteristics				
4-1 全阻抗值 Total resistance	<input checked="" type="checkbox"/> 10 KΩ ±20% <input type="checkbox"/> KΩ ±10% <input type="checkbox"/> KΩ + ___%/- ___%			
4-2 阻抗变化特性 Resistance taper	<input type="checkbox"/> A <input checked="" type="checkbox"/> B <input type="checkbox"/> C <input type="checkbox"/> _____			
4-3 残留阻抗值（端子：1-2，2-3） End resistance（Terminal :1-2, 2-3）	R≤10KΩ：≤10Ω； 10KΩ<R≤250KΩ：≤20Ω； R>250KΩ：≤0.1%R			
4-4 定格电力 Ratings power	0.05W			
4-5 最高使用电压 Maximum operating voltage	20V DC 或 50V AC 20V DC or 50V AC			
4-6 滑动杂音 Slider noise	<100mV			
4-7 同步误差 Gang error	<input checked="" type="checkbox"/> ±4dB（-40dB~0dB） <input type="checkbox"/> ±3dB（-40dB~0dB） *只适用于双联 Apply the Dual-Unit only			
4-8 绝缘抵抗 Insulation resistance	250V DC， >100MΩ			
4-9 耐电压 Voltage proof	250V AC 1 分钟以上 1 Minute at 250V AC			
4-10 回转寿命 Rotational life	<input checked="" type="checkbox"/> 10,000 cycles <input type="checkbox"/> 15,000 cycles 注：无负荷状态以每小时 600 周旋转，允许阻值最大变化±15%。 On the without load status according to the 600 r/h rotation, permissible resistance change ±15% max.			
东莞市长泰尔电子有限公司 DONG GUAN CHANG TAI ER ELECTRONIC CO., LTD.		制作 Designed By	审核 Checked By	核准 Approved By



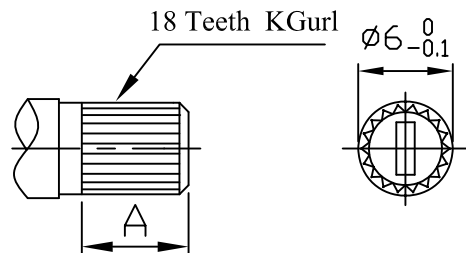
Mounting hole detail

轴的类型:

FA Shaft Style



TB Shaft Style



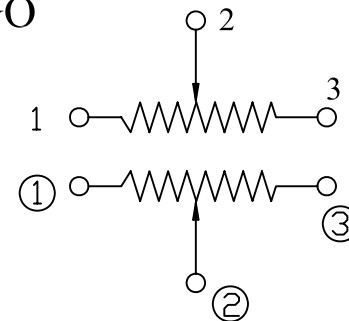
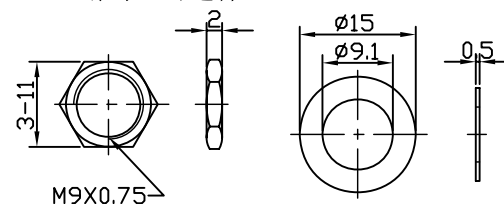
L	12.5	15	20	22.5	25	27.5	30	17.5
SpecifcatioGs	20	22.5	27.5	30	32.5	35	37.5	25
A	7	7	12	12	12	12	12	12

L	12.5	15	20	22.5	25	27.5	30	17.5
SpecifcatioGs	20	22.5	27.5	30	32.5	35	37.5	25
A	7	7	12	12	12	12	12	12

CIRCUIT:GO

Nut螺母 (可选件)

Washer垫圈 (可选件)



东莞市长泰尔电子有限公司

product code	H
R111A1GO	10
R111B1GO	12.5

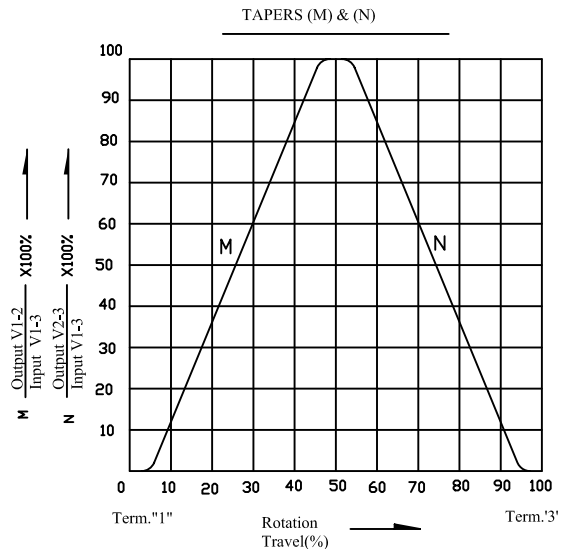
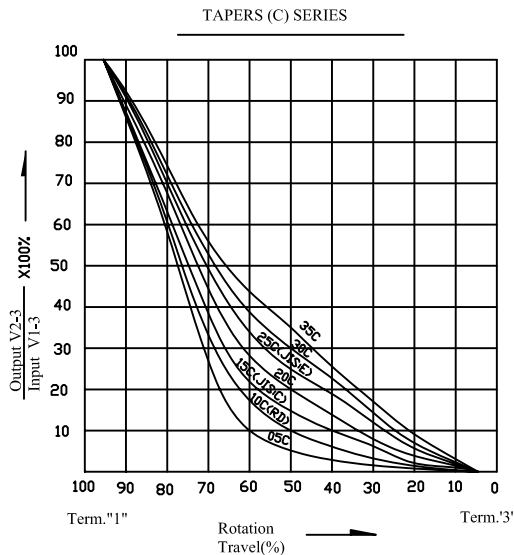
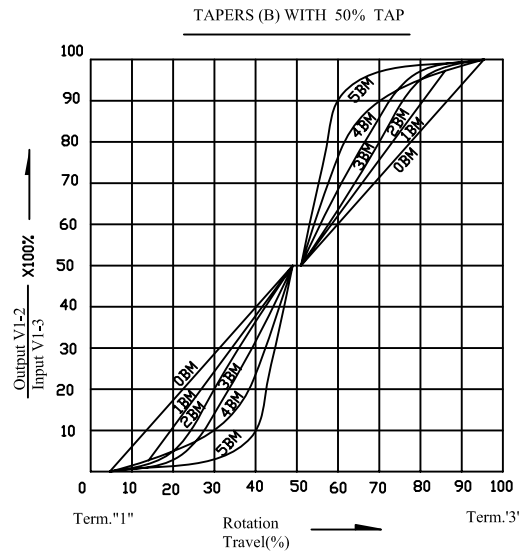
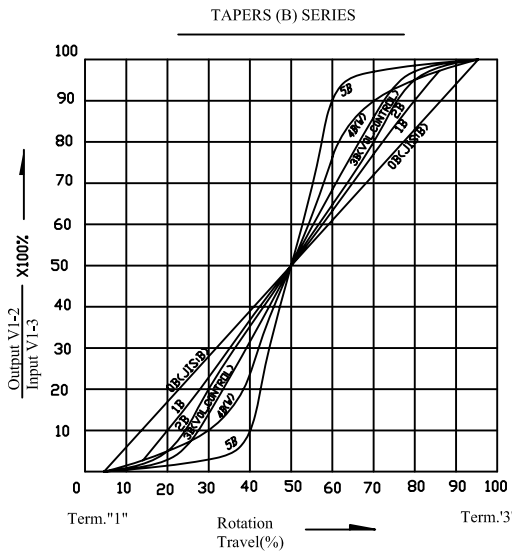
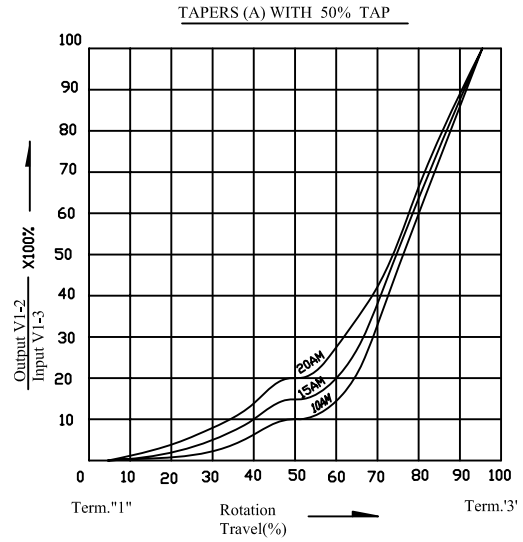
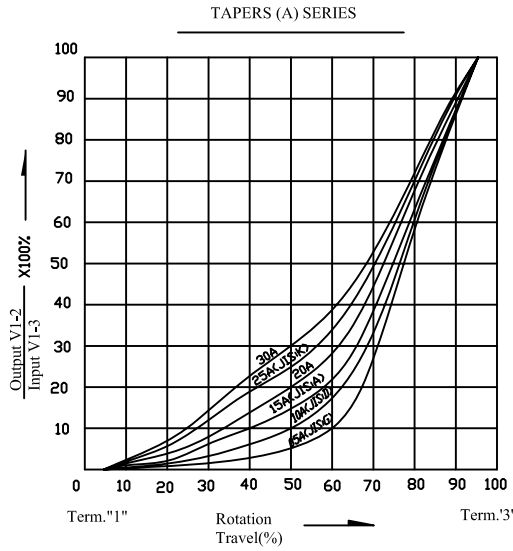
未注尺寸公差	
L ≤ 1.0吋	±0.1
1.0 < L ≤ 10吋	±0.3
10 < L ≤ 30吋	±0.5
30 < L ≤ 100吋	±1.0

比例	2:1	版本	1.1	设计	审核	批准
品名	R111□1GO 组立图					
图号	R111□1GO-					

东莞市长泰尔电子有限公司

DONG GUAN CHANG TAIER ELECTRONIC CO., LTD

阻抗变化特性 Resistance tapers



X-ON Electronics

Largest Supplier of Electrical and Electronic Components

Click to view similar products for [Potentiometers](#) category:

Click to view products by [CTR](#) manufacturer:

Other Similar products are found below :

[580SX4Q25F102SP](#) [580SX4Q25F103ZP](#) [58C2-2](#) [590SX1N32F103SS](#) [591SXJ48S252SC](#) [591SXP56S252SC](#) [591SXP56S503SC](#) [D31409](#)
[70B1G048K502X-A](#) [70B1M032S502W](#) [70B1N056S202W](#) [70B8N056F502W](#) [70J8N048S104U](#) [70L1N040P103W](#) [70L1N048P103X](#)
[70L1N048S103W](#) [GA2G056S101UA](#) [GA2G056S251UA](#) [GA2G056S501UA](#) [GA2L040S102UC](#) [GA2L040S103UC](#) [GA2L040S501UC](#)
[GS1G044P103UA](#) [GS1T032S103UA](#) [A43-1500](#) [A43-20K](#) [A47-200K](#) [A4720K](#) [RK14K1220-F25-C0-A103](#) [RK14K1220F25C0C104](#)
[RK14K1220-F25-C1-B103](#) [14910FBGLFY00103KA](#) [C0342008 5K](#) [J97589](#) [RV170F-10-15R1-B500K-0021](#) [917523A](#) [A43-40](#) [A43-750](#)
[A43S-5](#) [A47-15K](#) [A47-1K](#) [A4750K](#) [SPPG056P103U](#) [SWE-10](#) [GA2G040F103BA](#) [GA2G056S503UA](#) [GA2G056S504UA](#) [GA2L040S502UC](#)
[GA2L040S503UC](#) [POT-3217-02 \(MW22S-3217-500\)](#)