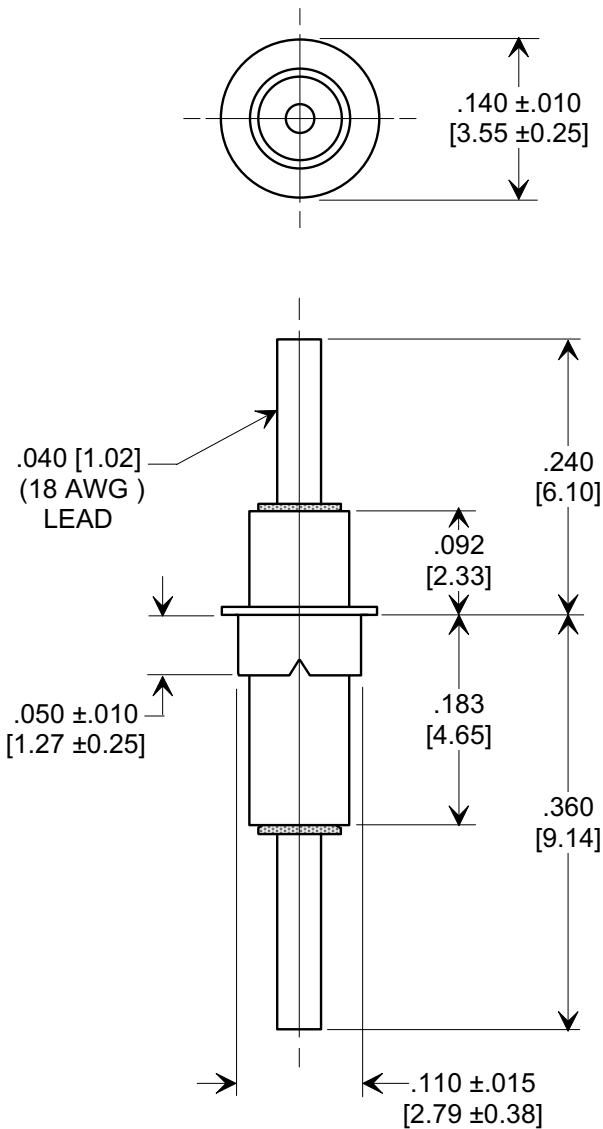
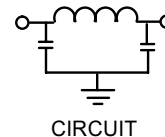
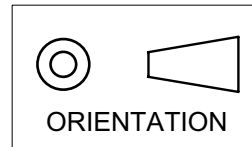


Electrical Testing
per Tusonix standard
test plans and Mil-Std-202
Test Methods.

MARKETING SALES DRAWING
DIMENSIONS IN INCHES - DO NOT SCALE THIS DRAWING
DIMENSIONS IN METRIC - []



| MIN. CAP. pF | WORKING VOLTAGE | | I.R. MIN. @ 100 (VDC.) | DWV (VDC) | CURRENT Idc. | MINIMUM NO LOAD INSERTION LOSS (dB) AT 25°C PER MIL-STD-220 | | | |
|--------------|-----------------|-------|------------------------|-----------|--------------|---|---------|-------|--------|
| | 85°C | 125°C | | | | 10 MHz | 100 MHz | 1 GHz | 10 GHz |
| 3000 | 125 | 50 | 10 G Ω | 250 | 15 | 7 | 50 | 65 | 60 |

| | | | | | | | |
|--------------|----------------------------|--|--|--|--|---|--|
| X-2015 Rev-0 | REVISION RECORD | | 0 Original Release C.O. 2910 RND TO COMP FMT. S.M. 07-13-00 1 20000717-5-07 ADDED DIM. .050, DWV & I.R. DIM. .140 WAS .138, .092 WAS .100 & .183 WAS .196. S.M. 01-08-04 2 20040108-2-01 | --TOLERANCES-- Unless Otherwise Specified | | Title EYELET STYLE EMI FILTER | |
| | DECIMAL ± .031 [0.79] | | | Drawn S.M. 07-13-00 | | Scale 6 X | |
| | ANGLES ± | | | Approved T.C. 07-13-00 | | A | |
| | TUSONIX TUCSON, ARIZONA | | | 4100-003 | | | |

X-ON Electronics

Largest Supplier of Electrical and Electronic Components

Click to view similar products for [EMI Feedthrough Filters](#) category:

Click to view products by [CTS](#) manufacturer:

Other Similar products are found below :

[FN7611-63-M6](#) [FN7612-10-M3](#) [FN7660-100-M8](#) [1202F-054](#) [1609991-8](#) [1609992-2](#) [16DFC6-C](#) [16FFD6-HE](#) [2-1609992-2](#) [2443-007-X5S0-102MLF](#) [2443-007-X5W0-502ZLF](#) [2463-001-X5S0-471MLF](#) [1609990-8](#) [1609991-3](#) [1609992-1](#) [1609992-3](#) [1609993-1](#) [1609993-7](#)
[200AFC6-P](#) [200DFC6-P](#) [FN7510-100-M8](#) [FN7510-32-M4](#) [FN7562-100-M8](#) [FN7562-200-M10](#) [FN7563-100-M8](#) [FN7611-10-M3](#) [FN7612-63-M6](#) [FN7661-16-M4](#) [2450-001-X5U0-102PLF](#) [2499-003-X5S0-152MLF](#) [32AFC6-H](#) [4100-000LF](#) [4201-050LF](#) [4204-001LF](#) [4253-002LF](#)
[4306-019LF](#) [4101-004LF](#) [4201-003LF](#) [4208-000LF](#) [4600-067](#) [094-6526-0000](#) [100AFC6-G](#) [10AFC6-B](#) [10DFC6-C](#) [1-1609990-3](#) [1-1609990-7](#) [1-1609992-8](#) [1-1609990-1](#) [1-1609991-1](#) [FN7514-32-M4](#)