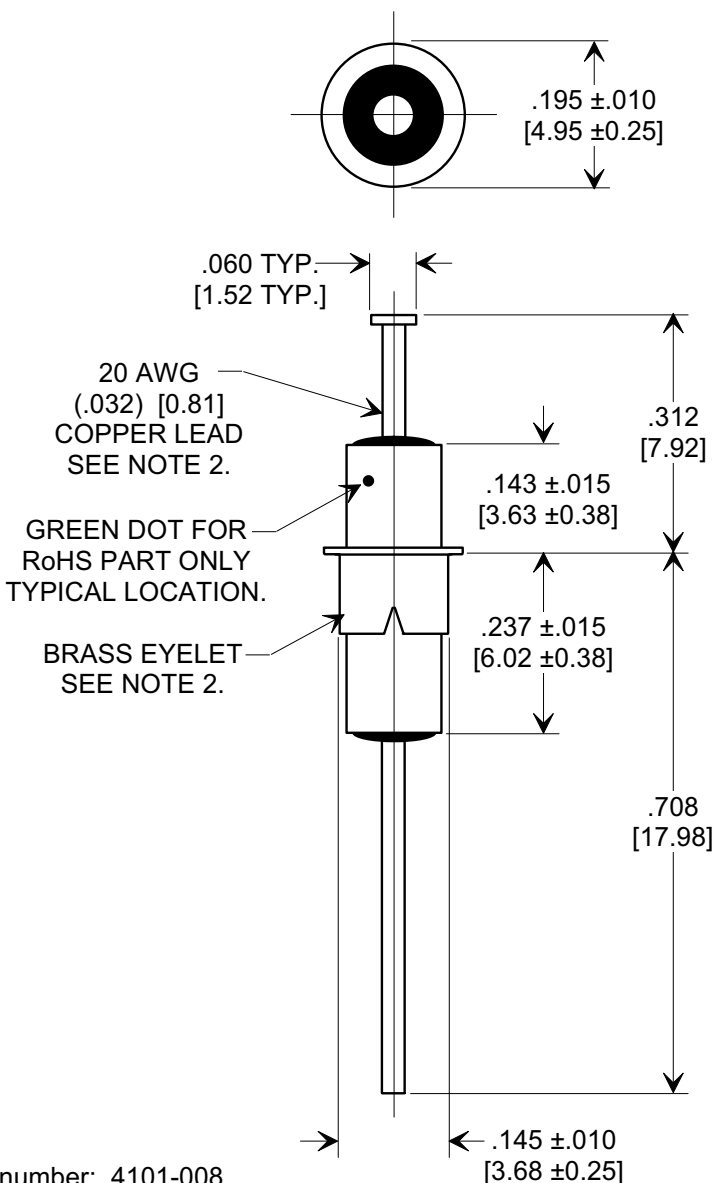
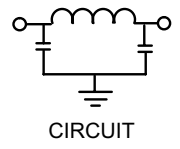
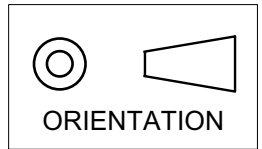


MARKETING SALES DRAWING
DIMENSIONS IN INCHES - DO NOT SCALE THIS DRAWING
DIMENSIONS IN METRIC - []

Electrical Testing
per Tusonix standard
test plans and Mil-Std-202
Test Methods.



Notes:

- Tusonix Standard part number: 4101-008.
Tusonix RoHS compliant part number: 4101-008 LF.
Customer must specify Standard or RoHS part number when ordering.
- Lead finish: Standard Part No.: 60/40 solder plated. RoHS Part No. Silver Plated.
Eyelet finish Standard Part No.: 60/40 solder plated. RoHS Part No. Silver Plated.
- Part Marking: Standard has no marking. RoHS part: Green Dot.

MIN. CAP (pF)	WORKING VOLTAGE (WVDC)		CURRENT Idc	I.R. MIN. @ 100 (VDC.)	DWV 25 SEC. (VDC)	MINIMUM NO-LOAD INSERTION LOSS (dB) AT 25°C PER MIL-STD-220			
	85°C	125°C				10 MHz	100 MHz	1 GHz	10 GHz
5500	200 VDC	100 VDC	10A	10 G Ω	400	14	55	70	70

X-2015 Rev-0	REVISION RECORD						--TOLERANCES-- Unless Otherwise Specified	Title	
	0	Original Release						EYELET STYLE EMI FILTER	
	1	CHANGED TOL. +.005, -.010 WAS ±.010, 200 VDC WAS 140 & 70. E.C. 11-05-87					DECIMAL ± .031 [.79]	Drawn	Scale
	2	WAS SK6848-000-S ADDED .060 TYP DIM. E.C. 11-23-87					ANGLES ±	S.M. 01-19-00	4 X
	3	DWG. # WAS 4101-008-000-S. E.C. 01-21-88					TUSONIX TUCSON, ARIZONA	Approved	T.C. 01-19-00
	4	4301 RDN TO COMP FMT. & ADDED METRIC. DIM. .143 WAS .156 & DIM .237 WAS .250. DELETED S. WASHERS. S.M. 01-19-00						A	4101-008
5	20000120-1-01 TOL. ±.010 WAS +.005 -.010. 100VDC WAS 200. ADDED TINNED COPPER.S.M. 07-14-03								
6	20030711-1-02 ADDED NOTES, IR & DWV. S.M. 09-14-05								
6	20050829-1-06								

X-ON Electronics

Largest Supplier of Electrical and Electronic Components

Click to view similar products for [EMI Feedthrough Filters](#) category:

Click to view products by [CTS](#) manufacturer:

Other Similar products are found below :

[FN7611-63-M6](#) [FN7612-10-M3](#) [FN7660-100-M8](#) [1202F-054](#) [1609991-8](#) [1609992-2](#) [16DFC6-C](#) [16FFD6-HE](#) [2-1609992-2](#) [2443-007-X5S0-102MLF](#) [2443-007-X5W0-502ZLF](#) [2463-001-X5S0-471MLF](#) [1609990-8](#) [1609991-3](#) [1609992-1](#) [1609992-3](#) [1609993-1](#) [1609993-7](#) [200AFC6-P](#) [200DFC6-P](#) [FN7510-100-M8](#) [FN7510-32-M4](#) [FN7562-100-M8](#) [FN7562-200-M10](#) [FN7563-100-M8](#) [FN7611-10-M3](#) [FN7612-63-M6](#) [FN7661-16-M4](#) [2450-001-X5U0-102PLF](#) [2499-003-X5S0-152MLF](#) [32AFC6-H](#) [4100-000LF](#) [4201-050LF](#) [4204-001LF](#) [4253-002LF](#) [4306-019LF](#) [4101-004LF](#) [4201-003LF](#) [4208-000LF](#) [4600-067](#) [094-6526-0000](#) [100AFC6-G](#) [10AFC6-B](#) [10DFC6-C](#) [1-1609990-3](#) [1-1609990-7](#) [1-1609992-8](#) [1-1609990-1](#) [1-1609991-1](#) [FN7514-32-M4](#)