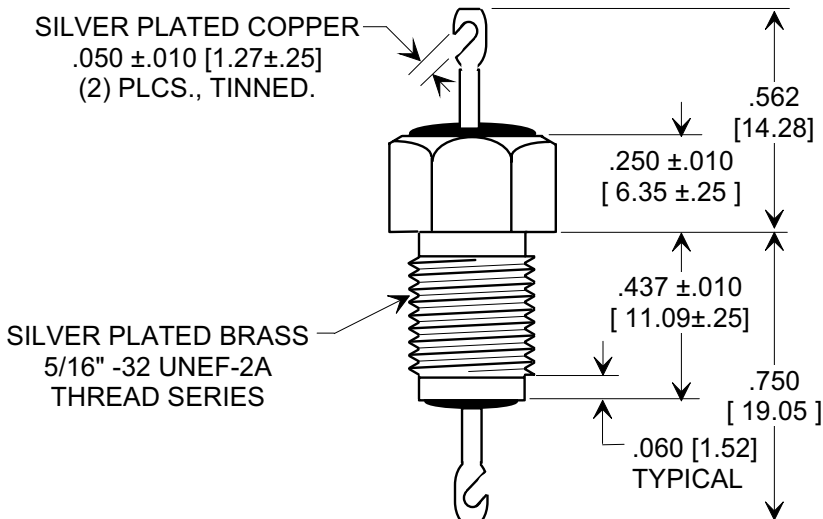
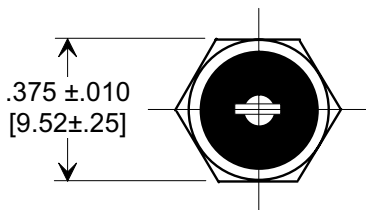
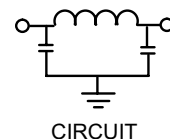
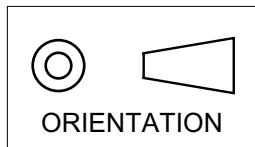


MARKETING SALES DRAWING

DIMENSIONS IN INCHES - DO NOT SCALE THIS DRAWING
 DIMENSIONS IN METRIC - []

Electrical Testing
 per Tusonix standard
 test plans and Mil-Std-202
 Test Methods.



NOTES:

- TUSONIX STANDARD PART NUMBER: 4206-006.
 TUSONIX RoHS COMPLIANT PART NUMBER: 4206-006 LF.
 CUSTOMER MUST SPECIFY STANDARD OR RoHS PART NUMBER WHEN ORDERING.
- LEAD FINISH: STANDARD PART #: SILVER PLATED WITH 60/40 SOLDER DIP. RoHS PART #: SILVER PLATED WITH 95.5 Sn/3.8 Ag/0.7 Cu SOLDER DIP.
- PART MARKING: TRADEMARK AND VARIATION NUMBER ON HEX FLATS.
 STANDARD PART: BLACK INK. RoHS PART: GREEN INK.
- SUPPLIED WITH SILVER PLATED HEX NUT AND INTERNAL TOOTH LOCK WASHER.

CAP. (pF)	WORKING VOLTAGE DC (V)		CURRENT dc (A)	MINIMUM NO LOAD INSERTION LOSS (dB) AT 25°C PER MIL-STD -220			
	3000 MIN.	85 °C		125 °C	10 MHz	100 MHz	1 GHz
	1000	500	25 A	10	55	70	70

X-2015 Rev-0	REVISION RECORD	Title	
	Original Release C.O.	EMI LOW PASS FILTER	
	DIM. 562 WAS .567. SM 12-5-97		
	19971203-5-01	Drawn E.C. 06-07-96	Scale 2 X
NOTE REVISED & DELETED VAR. S.M. 06-08-99	Approved B.Mc. 06-07-96		
19990607-3-03	TUSONIX TUCSON, ARIZONA		
ADDED NOTES 1-3 & CIRCUIT. S.M. 07-29-05	A	4206-006	
20050727-3-02			

TOLERANCES
 unless otherwise specified
 2 PLC.
 DECIMAL ± $\frac{}{}$
 3 PLC.
 DECIMAL ± .031 [0.79]

ANGLES ± $\frac{}{}$

X-ON Electronics

Largest Supplier of Electrical and Electronic Components

Click to view similar products for [EMI Feedthrough Filters](#) category:

Click to view products by [CTS](#) manufacturer:

Other Similar products are found below :

[FN7611-63-M6](#) [FN7612-10-M3](#) [FN7660-100-M8](#) [1202F-054](#) [1609991-8](#) [1609992-2](#) [16DFC6-C](#) [16FFD6-HE](#) [2-1609992-2](#) [2443-007-X5S0-102MLF](#) [2443-007-X5W0-502ZLF](#) [2463-001-X5S0-471MLF](#) [1609990-8](#) [1609991-3](#) [1609992-1](#) [1609992-3](#) [1609993-1](#) [1609993-7](#)
[200AFC6-P](#) [200DFC6-P](#) [FN7510-100-M8](#) [FN7510-32-M4](#) [FN7562-100-M8](#) [FN7562-200-M10](#) [FN7563-100-M8](#) [FN7611-10-M3](#) [FN7612-63-M6](#) [FN7661-16-M4](#) [2450-001-X5U0-102PLF](#) [2499-003-X5S0-152MLF](#) [32AFC6-H](#) [4100-000LF](#) [4201-050LF](#) [4204-001LF](#) [4253-002LF](#)
[4306-019LF](#) [4101-004LF](#) [4201-003LF](#) [4208-000LF](#) [4600-067](#) [094-6526-0000](#) [100AFC6-G](#) [10AFC6-B](#) [10DFC6-C](#) [1-1609990-3](#) [1-1609990-7](#) [1-1609992-8](#) [1-1609990-1](#) [1-1609991-1](#) [FN7514-32-M4](#)