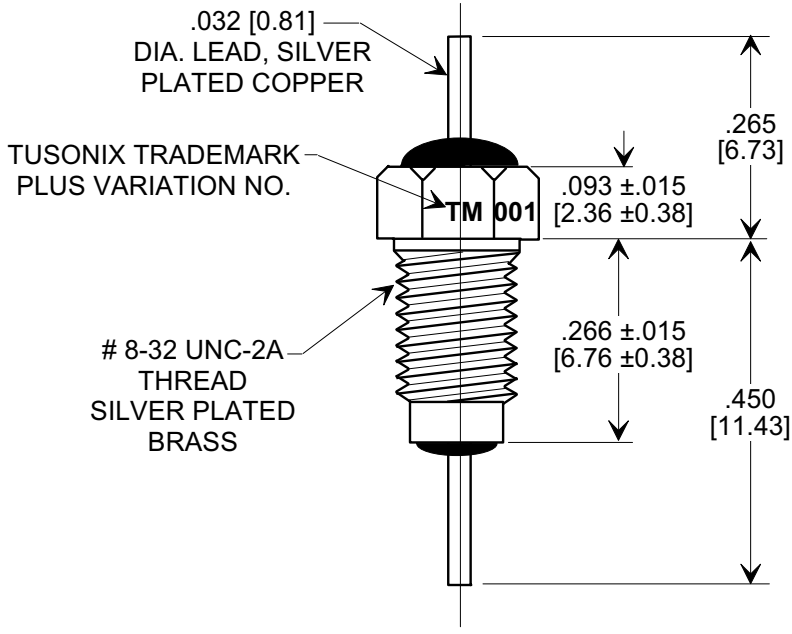
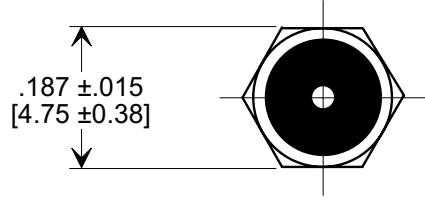
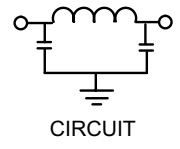
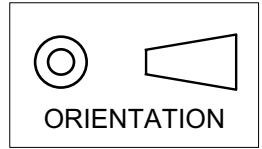


MARKETING SALES DRAWING

DIMENSIONS IN INCHES - DO NOT SCALE THIS DRAWING
DIMENSIONS IN METRIC - []

Electrical Testing
 per Tusonix standard
 test plans and Mil-Std-202
 Test Methods.



NOTES:

- TUSONIX STANDARD PART NUMBER: 4251-001.
 TUSONIX RoHS COMPLIANT PART NUMBER: 4251-001 LF.
 CUSTOMER MUST SPECIFY STANDARD OR RoHS PART NUMBER WHEN ORDERING.
- PART MARKING: TRADEMARK AND VARIATION NUMBER ON HEX FLATS.
 STANDARD PART: BLACK INK. RoHS PART: GREEN INK.
- SUPPLIED WITH SILVER PLATED COPPER ALLOY HEX NUT AND INTERNAL TOOTH LOCK WASHER.

15,000	50 VDC	10 GΩ	250 VDC	10 A	5	9	18	45	65	70	70
MIN. CAP.(pf)	+125 °C DC WORKING VOLTAGE	I.R. MIN. @ 100 VDC	DWV	CURRENT	1 MHz	3 MHz	10 MHz	30 MHz	100 MHz	300 MHz	1GHz
MINIMUM NO LOAD INSERTION LOSS (dB) AT 25°C PER MIL-STD-220											

X-2015 Rev-0	REVISION RECORD				TUSONIX TUCSON, ARIZONA	--TOLERANCES-- Unless Otherwise Specified		Title MULTI LAYER BUSHING STYLE EMI FILTER			
	Original Release C.O. 6611	0	HDIM'S REVISED .81 WAS .812 6.7 WAS 6.75. TITLE CHGD. E.C. 5-26-92			DECIMAL ± .031 [0.79]					
	6667	1	RDN TO COMP FMT. S.M. 06-03-02			ANGLES ±		Drawn S. M. 02-28-02		Scale 4 X	
	20020528-3-02	2	DWV 250 WAS 125. S.M. 09-22-03			Approved T.C. 02-58-02		A		4251-001	
20030922-5-03	3	ADDED NOTES 1-3. S.M. 10-06-05									
20050927-7-03	4										

X-ON Electronics

Largest Supplier of Electrical and Electronic Components

Click to view similar products for [EMI Feedthrough Filters](#) category:

Click to view products by [CTS](#) manufacturer:

Other Similar products are found below :

[FN7611-63-M6](#) [FN7612-10-M3](#) [FN7660-100-M8](#) [1202F-054](#) [1609991-8](#) [1609992-2](#) [16DFC6-C](#) [16FFD6-HE](#) [2-1609992-2](#) [2443-007-X5S0-102MLF](#) [2443-007-X5W0-502ZLF](#) [2463-001-X5S0-471MLF](#) [1609990-8](#) [1609991-3](#) [1609992-1](#) [1609992-3](#) [1609993-1](#) [1609993-7](#)
[200AFC6-P](#) [200DFC6-P](#) [FN7510-100-M8](#) [FN7510-32-M4](#) [FN7562-100-M8](#) [FN7562-200-M10](#) [FN7563-100-M8](#) [FN7611-10-M3](#) [FN7612-63-M6](#) [FN7661-16-M4](#) [2450-001-X5U0-102PLF](#) [2499-003-X5S0-152MLF](#) [32AFC6-H](#) [4100-000LF](#) [4201-050LF](#) [4204-001LF](#) [4253-002LF](#)
[4306-019LF](#) [4101-004LF](#) [4201-003LF](#) [4208-000LF](#) [4600-067](#) [094-6526-0000](#) [100AFC6-G](#) [10AFC6-B](#) [10DFC6-C](#) [1-1609990-3](#) [1-1609990-7](#) [1-1609992-8](#) [1-1609990-1](#) [1-1609991-1](#) [FN7514-32-M4](#)