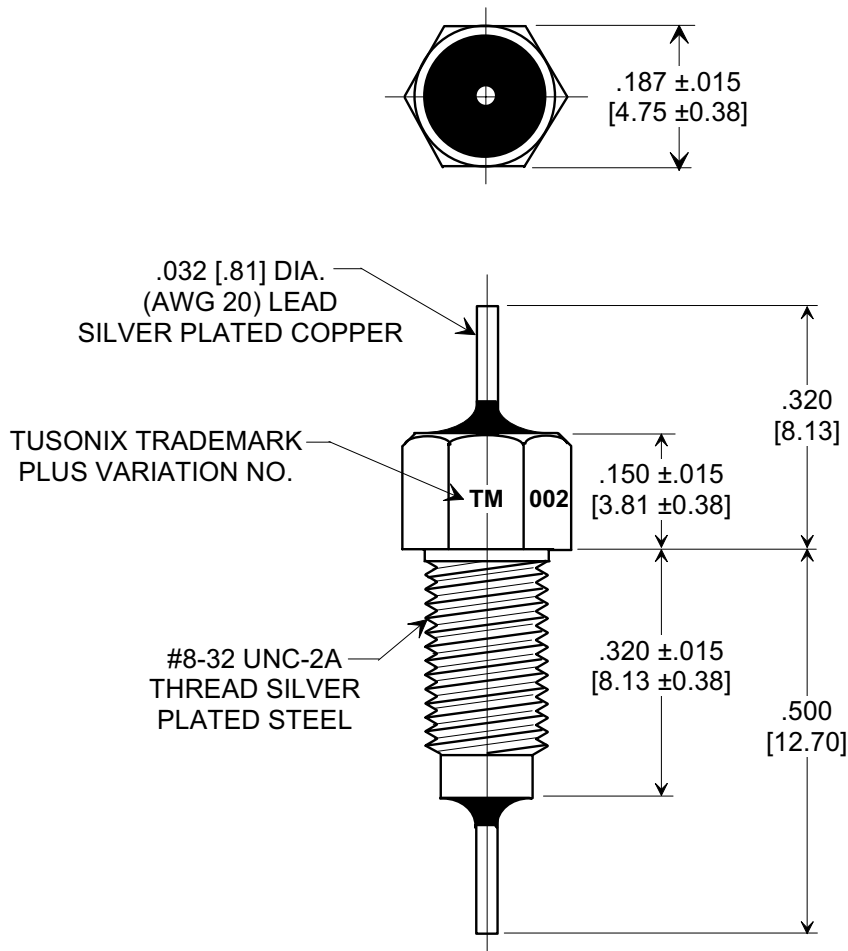
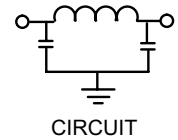
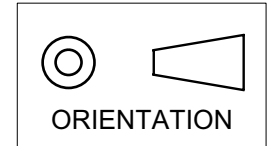


MARKETING SALES DRAWING
DIMENSIONS IN INCHES - DO NOT SCALE THIS DRAWING
DIMENSIONS IN METRIC []


Electrical Testing
per Tusonix standard
test plans and Mil-Std-202
Test Methods.



NOTES:

1. TUSONIX STANDARD PART NUMBER: 4251-002.
TUSONIX RoHS COMPLIANT PART NUMBER: 4251-002 LF.
CUSTOMER MUST SPECIFY STANDARD OR RoHS PART NUMBER WHEN ORDERING.
2. PART MARKING: TRADEMARK AND VARIATION NUMBER ON HEX FLATS.
STANDARD PART: BLACK INK. RoHS PART: GREEN INK.
3. SUPPLIED WITH SILVER PLATED COPPER ALLOY HEX NUT AND INTERNAL TOOTH LOCK WASHER.

| MIN. CAP. | 125°C WORKING VOLTAGE | CURRENT Vdc | IR MIN. | DWV | MINIMUM NO LOAD INSERTION LOSS (dB) @ 25°C PER MIL-STD-220 | | | | |
|--------------|-----------------------------|----------------|------------|---------|---|--------|---------|-------|--------|
| | | | | | 1 MHz | 10 MHz | 100 MHz | 1 GHz | 10 GHz |
| 12,000 pF | 125 VDC | 10 A | 10 G Ω | 500 VDC | 5 | 28 | 65 | 70 | 70 |

| | | | | | | | | | | | | | |
|--------------|--------------------------------------|--|--|--|--|--|---|--|--|---------------------|--|-----------|--|
| X-2015 Rev-0 | REVISION RECORD | | | <div>--TOLERANCES-- Unless Otherwise Specified</div> <div>DECIMAL ± .031 [0.79]</div> <div>ANGLES ± </div> <div><div>TUSONIX</div><div>TUCSON, ARIZONA</div></div> | | | Title MULTILAYER BUSHING STYLE EMI FILTER | | | Drawn S.M. 02-28-02 | | Scale 4 X | |
| | Approved T.C. 02-28-02 | | | | | | | | | | | | |
| | Original Release C.O. 6611 | | | | | | DIM'S REVISED, TITLE CHNGD. E.C. 05-26-92 | | | A | | 4251-002 | |
| | 0 | | | | | | | | | | | | |
| | 1 | | | | | | | | | | | | |
| | 2 | | | | | | | | | | | | |
| 3 | | | | | | | | | | | | | |
| 4 | | | | | | | | | | | | | |

X-ON Electronics

Largest Supplier of Electrical and Electronic Components

Click to view similar products for [EMI Feedthrough Filters](#) category:

Click to view products by [CTS](#) manufacturer:

Other Similar products are found below :

[FN7611-63-M6](#) [FN7612-10-M3](#) [FN7660-100-M8](#) [1202F-054](#) [1609991-8](#) [1609992-2](#) [16DFC6-C](#) [16FFD6-HE](#) [2-1609992-2](#) [2443-007-X5S0-102MLF](#) [2443-007-X5W0-502ZLF](#) [2463-001-X5S0-471MLF](#) [1609990-8](#) [1609991-3](#) [1609992-1](#) [1609992-3](#) [1609993-1](#) [1609993-7](#) [200AFC6-P](#) [200DFC6-P](#) [FN7510-100-M8](#) [FN7510-32-M4](#) [FN7562-100-M8](#) [FN7562-200-M10](#) [FN7563-100-M8](#) [FN7611-10-M3](#) [FN7612-63-M6](#) [FN7661-16-M4](#) [2450-001-X5U0-102PLF](#) [2499-003-X5S0-152MLF](#) [32AFC6-H](#) [4100-000LF](#) [4201-050LF](#) [4204-001LF](#) [4253-002LF](#) [4306-019LF](#) [4101-004LF](#) [4201-003LF](#) [4208-000LF](#) [4600-067](#) [094-6526-0000](#) [100AFC6-G](#) [10AFC6-B](#) [10DFC6-C](#) [1-1609990-3](#) [1-1609990-7](#) [1-1609992-8](#) [1-1609990-1](#) [1-1609991-1](#) [FN7514-32-M4](#)