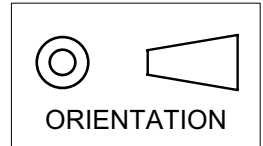
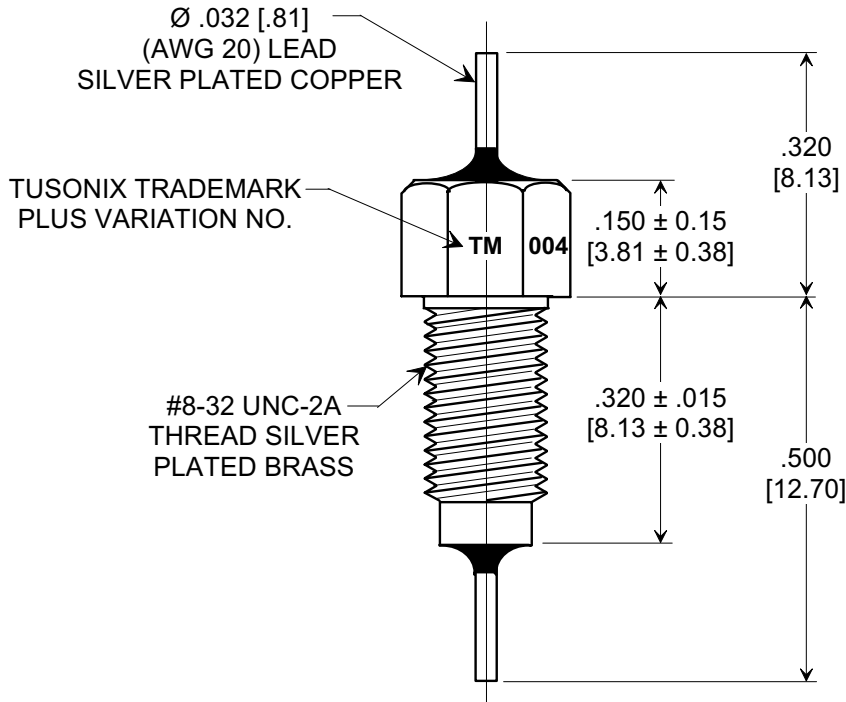
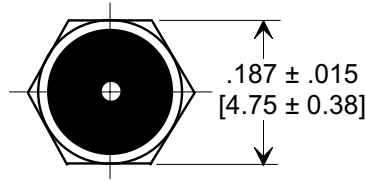
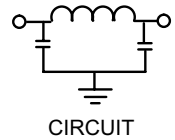


MARKETING SALES DRAWING
DIMENSIONS IN INCHES - DO NOT SCALE THIS DRAWING
DIMENSIONS IN METRIC []

This drawing is the property of Tusonix, Inc., and may not be used, reproduced, published or disclosed to others without expressed authorization by Tusonix Inc.



Electrical Testing
per Tusonix standard
test plans and Mil-Std-202
Test Methods.



NOTES:

- TUSONIX STANDARD PART NUMBER: 4251-004.
TUSONIX RoHS COMPLIANT PART NUMBER: 4251-004 LF.
CUSTOMER MUST SPECIFY STANDARD OR RoHS PART NUMBER WHEN ORDERING.
- PART MARKING: TRADEMARK AND VARIATION NUMBER ON HEX FLATS.
STANDARD PART: BLACK INK. RoHS PART: GREEN INK.
- SUPPLIED WITH SILVER PLATED COPPER ALLOY, HEX NUT AND INTERNAL TOOTH LOCK WASHER.

MIN. CAP.	125°C WORKING VOLTAGE	CURRENT Vdc	IR MIN.	DWV	MINIMUM NO LOAD INSERTION LOSS (dB) @ 25°C PER MIL-STD-220				
					1 MHz	10 MHz	100 MHz	1 GHz	10 GHz
28,000 pF	100 VDC	10 A	10 G Ω	300 VDC	10	38	75	75	75

X-2015 Rev-0	REVISION RECORD						--TOLERANCES-- Unless Otherwise Specified	Title										
	0	Original Release	6611	DIM'S REVISED, TITLE CHNGD.				MULTILAYER BUSHING STYLE EMI FILTER										
	1	6667	WVDC WAS 70. E.C. 07-11-94	2	RDN TO COMP FMT & ADDED NOTE & SILVER PLATED.	3	DIM'S IN METRIC & IR MIN, DWV ADDED	4	COPPER ALLOY WAS PHOSPHOR BRONZE	5	ADDED NOTES 1 & 2.	6	ON BUSHING BRASS WAS STEEL. S.M. 04-04-06	DECIMAL ± .031 [0.79]	Drawn	S.M. 12-03-98	Scale	4 X
	1	6667	WVDC WAS 70. E.C. 07-11-94	2	RDN TO COMP FMT & ADDED NOTE & SILVER PLATED.	3	DIM'S IN METRIC & IR MIN, DWV ADDED	4	COPPER ALLOY WAS PHOSPHOR BRONZE	5	ADDED NOTES 1 & 2.	6	ON BUSHING BRASS WAS STEEL. S.M. 04-04-06	ANGLES ±	Approved	E.F. 12-03-98		
	1	6667	WVDC WAS 70. E.C. 07-11-94	2	RDN TO COMP FMT & ADDED NOTE & SILVER PLATED.	3	DIM'S IN METRIC & IR MIN, DWV ADDED	4	COPPER ALLOY WAS PHOSPHOR BRONZE	5	ADDED NOTES 1 & 2.	6	ON BUSHING BRASS WAS STEEL. S.M. 04-04-06	TUSONIX				
	1	6667	WVDC WAS 70. E.C. 07-11-94	2	RDN TO COMP FMT & ADDED NOTE & SILVER PLATED.	3	DIM'S IN METRIC & IR MIN, DWV ADDED	4	COPPER ALLOY WAS PHOSPHOR BRONZE	5	ADDED NOTES 1 & 2.	6	ON BUSHING BRASS WAS STEEL. S.M. 04-04-06	TUCSON, ARIZONA	A	4251-004		

X-ON Electronics

Largest Supplier of Electrical and Electronic Components

Click to view similar products for [EMI Feedthrough Filters](#) category:

Click to view products by [CTS](#) manufacturer:

Other Similar products are found below :

[FN7611-63-M6](#) [FN7612-10-M3](#) [FN7660-100-M8](#) [1202F-054](#) [1609991-8](#) [1609992-2](#) [16DFC6-C](#) [16FFD6-HE](#) [2-1609992-2](#) [2443-007-X5S0-102MLF](#) [2443-007-X5W0-502ZLF](#) [2463-001-X5S0-471MLF](#) [1609990-8](#) [1609991-3](#) [1609992-1](#) [1609992-3](#) [1609993-1](#) [1609993-7](#) [200AFC6-P](#) [200DFC6-P](#) [FN7510-100-M8](#) [FN7510-32-M4](#) [FN7562-100-M8](#) [FN7562-200-M10](#) [FN7563-100-M8](#) [FN7611-10-M3](#) [FN7612-63-M6](#) [FN7661-16-M4](#) [2450-001-X5U0-102PLF](#) [2499-003-X5S0-152MLF](#) [32AFC6-H](#) [4100-000LF](#) [4201-050LF](#) [4204-001LF](#) [4253-002LF](#) [4306-019LF](#) [4101-004LF](#) [4201-003LF](#) [4208-000LF](#) [4600-067](#) [094-6526-0000](#) [100AFC6-G](#) [10AFC6-B](#) [10DFC6-C](#) [1-1609990-3](#) [1-1609990-7](#) [1-1609992-8](#) [1-1609990-1](#) [1-1609991-1](#) [FN7514-32-M4](#)