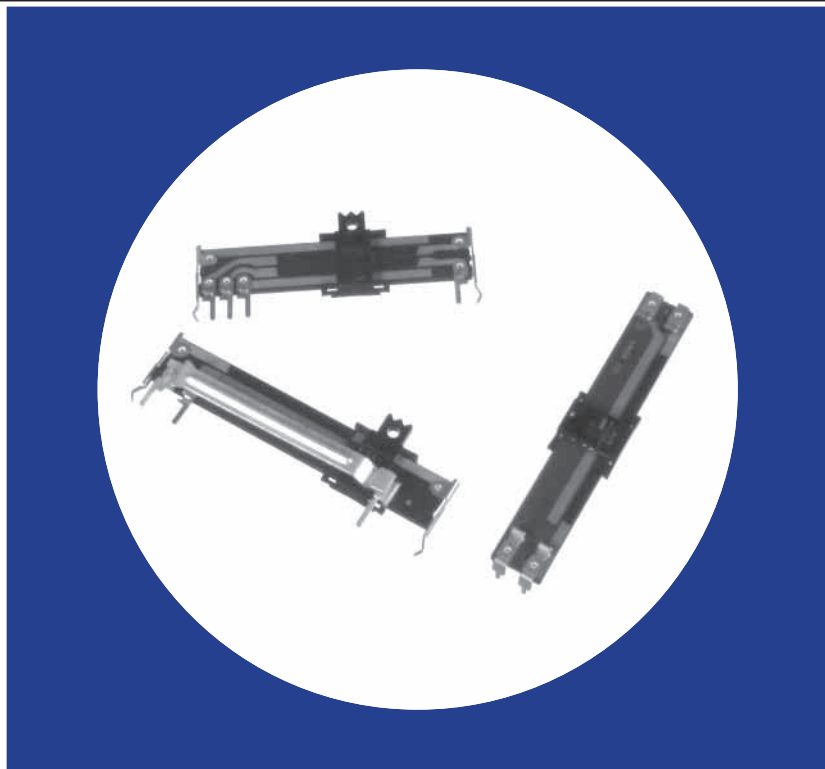


Commercial Linear Motion Carbon Composition Slide Potentiometer

Features

- 10-60mm slider travel
- Innovative AC power switch (SPST, SPDT)
- Center detent available
- Single or dual element designs
- Economical
- Wide resistance range
- Slim construction
- RoHS Compliant



Patent No.: US: 5,959,525 , Taiwan: 204502.

Electrical and Mechanical Specifications

Resistance Range

500 ohms through 1 megohms, linear
Consult CTS for audio taper

Resistance Tolerance

±30%, ±20%, ±10%

Insulation Resistance

10 Megohms minimum at 250 VDC

Maximum Operating Voltage

Taper	10mm	15mm 20mm	30mm	45mm	60mm
Linear	100VDC	150VDC 200VDC	250VDC	300VDC	500VDC
Non-linear	50VDC	50VDC 150VDC	200VDC	250VDC	300VDC

Power Rating, watts

Taper	10mm	15mm 20mm	30mm	45mm	60mm
Linear	0.05w	0.1w	0.2w	0.25w	0.5w
Non-linear	0.025w	0.05w	0.1w	0.15w	0.25w

Power Switch (optional)

SPST - 10,000 cycles carrying 1,000 watts 120 VAC
(Tungsten-filament)

SPDT - 10,000 cycles carrying 600 watts 120 VAC
(Tungsten-filament)

Slide Travel

Potentiometer without switch:

X and U Style: 10, 15, 20, 30, 45, and 60mm

V Style: 10, 15, 25, 40, and 55mm

Potentiometer with switch:

30mm = 27mm electrical + 3mm switch (SPST only)

20mm = 17mm electrical + 3mm switch

Operating Force

Potentiometer : 20-150 g

Switch : 100-500 g

Stop Strength

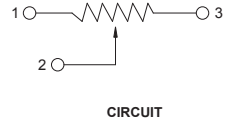
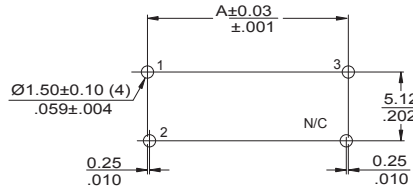
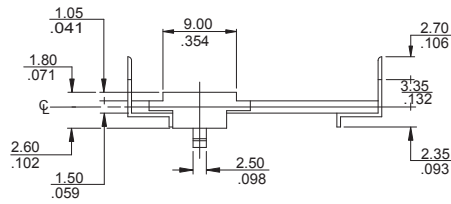
3K gf maximum, measured at base of slider

Operating Life

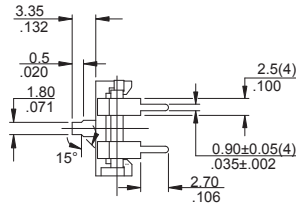
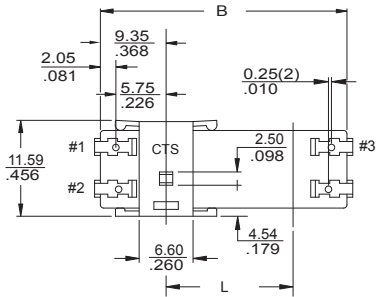
Standard : 10,000 cycles

Special : 100,000 , 250,000 cycles

TYPE 448V MONO



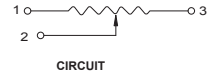
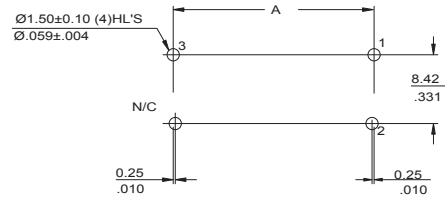
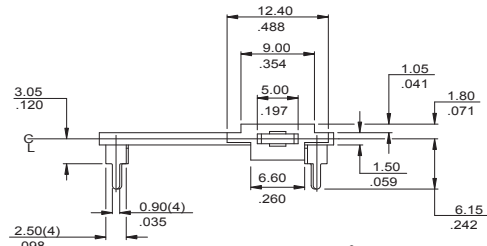
CIRCUIT



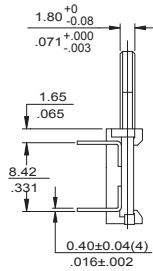
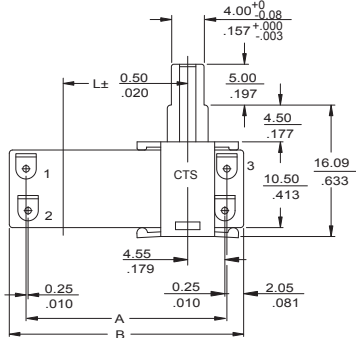
MODEL	DIMENSIONS		
	L (Travel)	A	B
448V-10M	10/ .394	30.20/1.189	28.70/1.130
448V-15M	15/ .591	35.20/1.387	33.70/1.372
448V-25M	25/ .984	45.20/1.180	43.70/1.721
448V-40M	40/ 1.575	60.20/2.370	58.70/2.311
448V-55M	55/ 2.166	75.20/2.961	73.70/2.902

DIMENSION: mm
INCH

TYPE 448U MONO



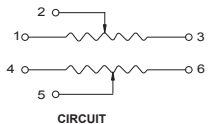
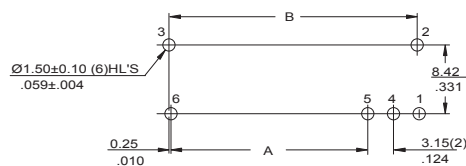
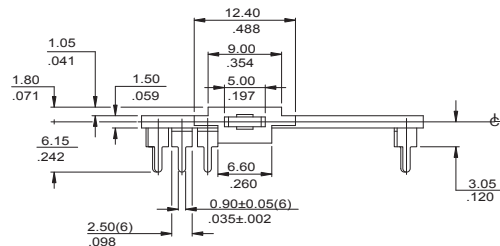
CIRCUIT



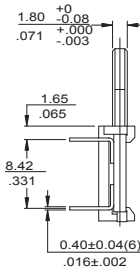
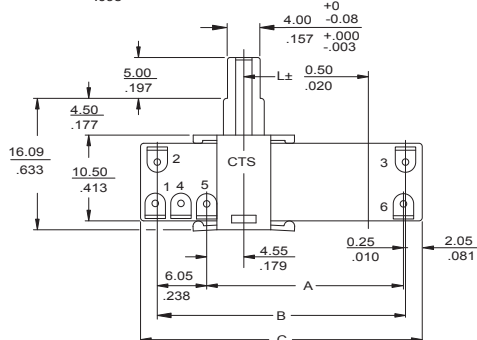
MODEL	DIMENSIONS		
	L (Travel)	A	B
448U-10M	10/ .394	19.60/ .772	23.70/ .933
448U-15M	15/ .591	24.60/ .969	28.70/1.130
448U-20M	20/ .787	29.60/1.165	33.70/1.327
448U-30M	30/ 1.181	39.60/1.559	43.70/1.720
448U-45M	45/ 1.772	54.60/2.149	58.70/2.311
448U-60M	60/ 2.362	69.60/2.740	73.70/2.902

DIMENSION: mm
INCH

TYPE 448U DUAL



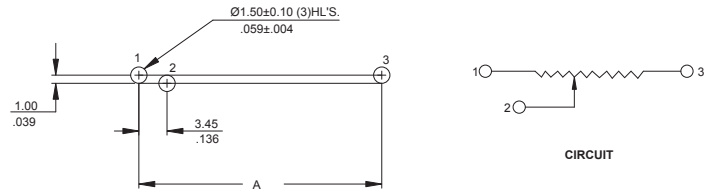
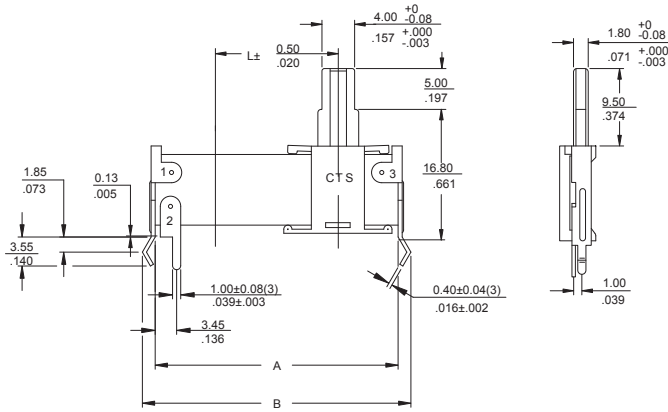
CIRCUIT



MODEL	DIMENSIONS			
	L (Travel)	A	B	C
448U-20D	20/ .787	29.10/1.146	35.40/1.394	39.50/1.555
448U-30D	30/ 1.181	39.10/1.539	45.40/1.787	49.50/1.949
448U-45D	45/ 1.772	54.10/2.130	60.40/2.378	64.50/2.539

DIMENSION: mm
INCH

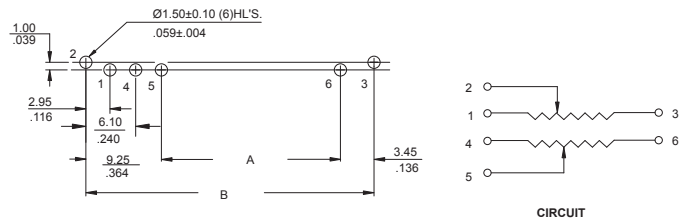
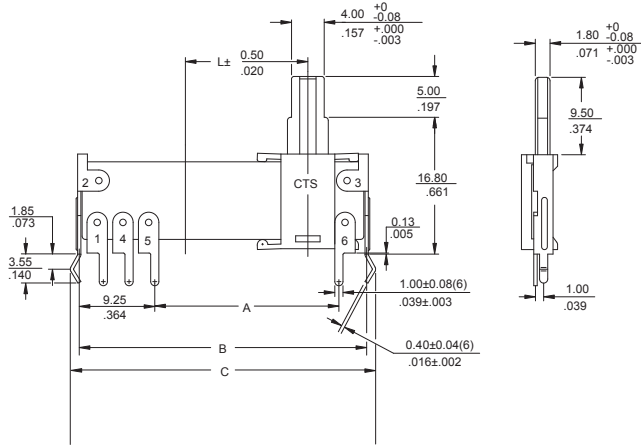
TYPE 448X MONO



MODEL	DIMENSIONS		
	L (Travel)	A	B
448X-10M	10/ .394	24.50/ .965	26.60/1.047
448X-15M	15/ .591	29.50/1.161	31.60/1.244
448X-20M	20/ .787	34.50/1.359	36.60/1.441
448X-30M	30/ 1.181	44.50/1.752	46.60/1.835
448X-45M	45/ 1.772	59.50/2.343	61.60/2.425
448X-60M	60/ 2.362	74.50/2.934	76.60/3.016

DIMENSION: mm
INCH

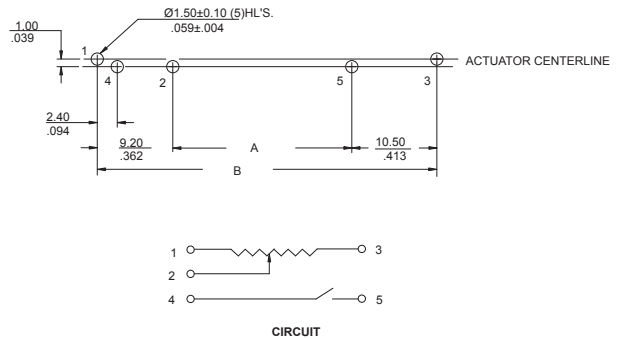
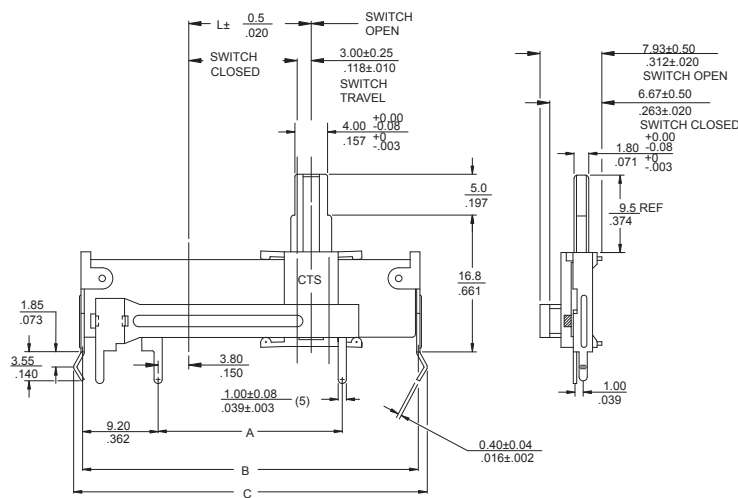
TYPE 448X DUAL



MODEL	DIMENSIONS			
	L (Travel)	A	B	C
448X-20D	20/ .787	27.60/1.087	40.30/1.587	42.40/1.669
448X-30D	30/ 1.181	37.60/1.481	50.30/1.981	52.40/2.063
448X-45D	45/ 1.772	52.60/2.071	65.30/2.571	67.40/2.654

DIMENSION: mm
INCH

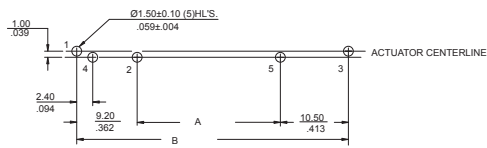
TYPE 448X MONO W/SPST SWITCH



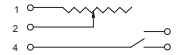
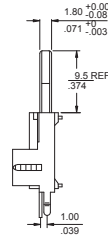
MODEL	DIMENSIONS			
	L (Travel)	A	B	C
448X-20MS	20/ .787	27.50/1.083	47.20/1.859	49.20/1.937
448X-30MS	30/ 1.181	37.50/1.476	57.20/2.272	59.20/2.331

DIMENSION: mm
INCH

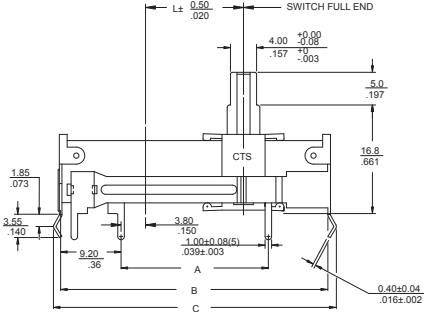
TYPE 448X MONO W/SPDT SWITCH (with style A actuator only)



DIMENSION: $\frac{\text{mm}}{\text{INCH}}$

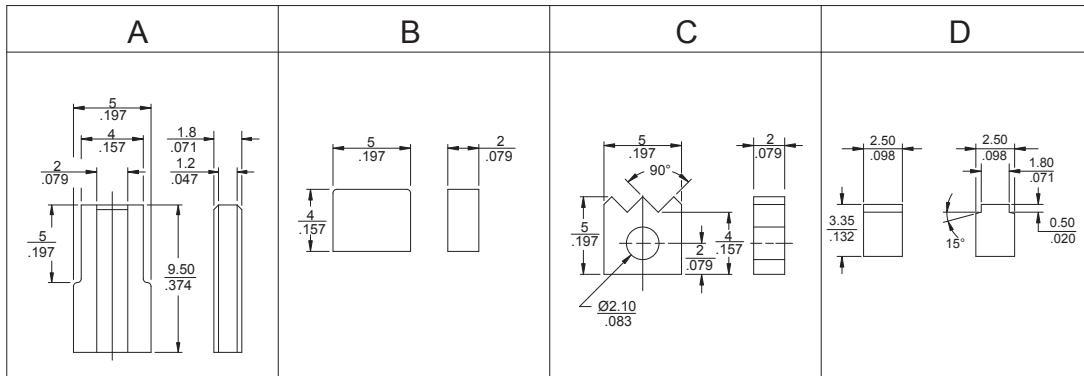


CIRCUIT

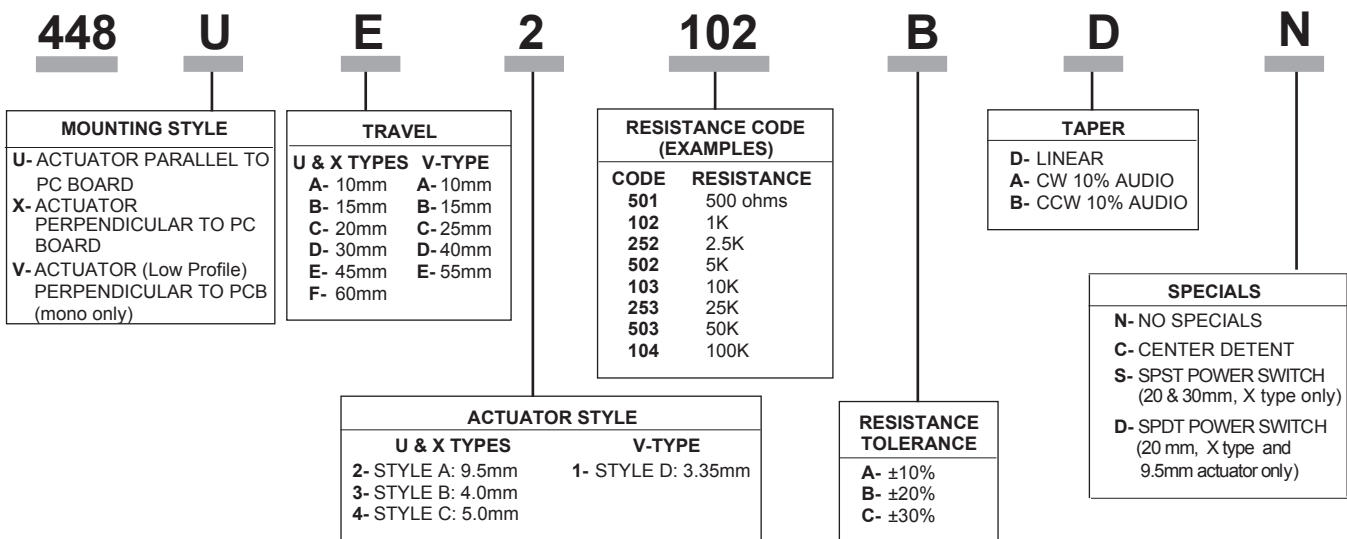


MODEL	DIMENSIONS			
	L (Travel)	A	B	C
448X-20MS	20/ .787	27.50/1.083	47.20/1.859	49.20/1.937

448 Series Actuator Styles



Ordering Information



Consult CTS for dual resistance element, customized, or not listed features.

X-ON Electronics

Largest Supplier of Electrical and Electronic Components

Click to view similar products for [Slide Potentiometers](#) category:

Click to view products by [CTS](#) manufacturer:

Other Similar products are found below :

[M22](#) [MHS133K](#) [MSS12A](#) [MSSA22](#) [M42A](#) [MSS42G](#) [SS-4928](#) [RSA0K11A901L](#) [SLB124145](#) [SLB1340R45](#) [RA6020F-10-20D1-B50K](#)
[RA4520F-10-20D1-B50K](#) [TSS11AGPC](#) [X22205CAAF](#) [448XC2103BDN](#) [X22205A-437W](#) [T22205BAAE](#) [SS-22J08-G5](#) [X22205AAAL](#)
[K22208EAAG](#) [PS15-10PC1BR10K](#) [1101M1S3ZQI2](#) [1201M1S1ZBE2](#) [1101M2S4AGE2](#) [1101M2S6ABE2](#) [1201M1S3ZBE2](#) [EVA-](#)
[JQKR15Y14](#) [EVA-NADR15A14](#) [EVA-NADR15D14](#) [EVA-NE4R15A14](#) [EVB-NADR15Y14](#) [ASE1D](#) [ASE1E](#) [ASE2D](#) [MFP113D](#) [MFP130](#)
[MFP1323](#) [MFP1424](#) [MFP161D](#) [MFP2220R](#) [MFP231P](#) [MFP261N](#) [MMP1010DRA1](#) [MMP131](#) [L202021MS02Q](#) [MFP120](#) [MFP 130 R](#)
[MFP1323R](#) [MFP140](#) [MFP140-R](#)