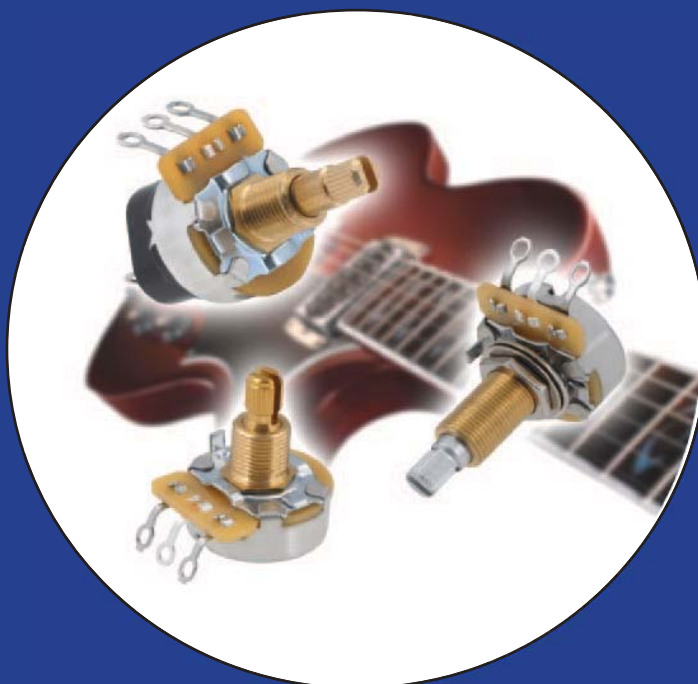


### CTS Guitar Series 24mm Potentiometer

#### Features

- Low Noise
- Robust Construction
- Proprietary Anti-Static Lube
- Brass Shaft
- Brass Bushing
- Smooth Feel
- Various Shaft Trims
- Wide Selection of Tapers
- Reduced Shaft Wobble
- Solderable Cover



#### Electrical and Mechanical Specifications

##### Resistance Values

25K $\Omega$ , 50K $\Omega$ , 100K $\Omega$ , 250K $\Omega$ , 500K $\Omega$ , 1M $\Omega$

##### Resistance Tolerance

$\pm 10\%$ ,  $\pm 20\%$

##### Resistance Tapers

See Resistance Taper Chart for Available Tapers

##### Rotational Torque

Standard Torque: 0.75-6.00 in.oz.  
Low Torque: 0.50-2.00 in.oz.

##### Rotational Angle

Mechanical: Approx. 300°

##### Power Rating

0.25 watts @ 55°C

##### RoHS Compliant

##### Bushing

3/8" – 32 UNEF  
.250", .375", .500", .625", or .750" long

##### Shaft Length

.500", .625", .750", .875", 1.00", or 1.125"

##### Shaft Trim

Round, Flat, or Slot & Knurled

##### Stop Strength

9 in. lbs. minimum

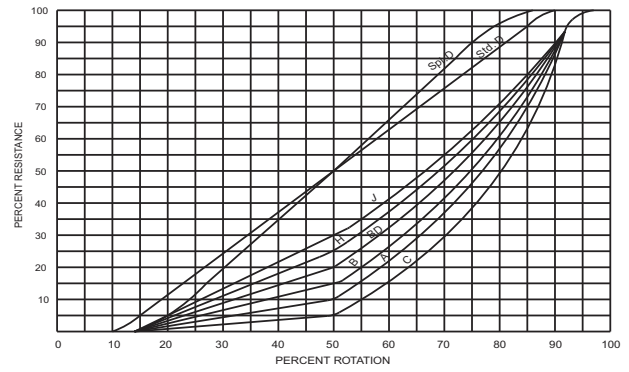
##### Push-Pull Strength of Shaft

30 lbs. minimum

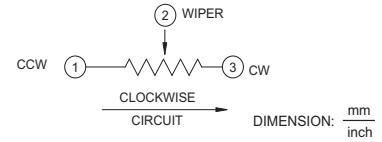
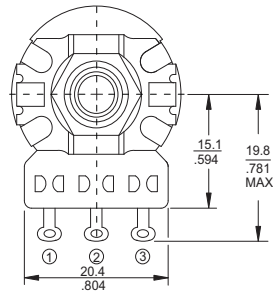
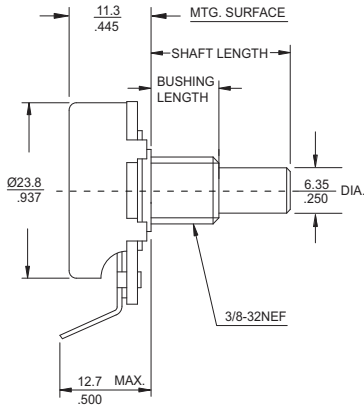
The CTS 450G Guitar Series Potentiometers are the same popular potentiometers used in guitars for years. This new series offers standard constructions for simplified ordering and pricing. CTS customized potentiometers are still available upon request.

# Resistance Tapers

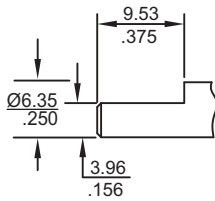
Standard Linear and Tapered Curves (no taps)		
CTS Curve No.	% Resistance @ 50% Rotation	
Std. D	50%	
Spl. D (EIA "S" Curve)	50%	
C	5%	
A	10%	
B	15%	
BD	20%	
H	25%	
J	30%	



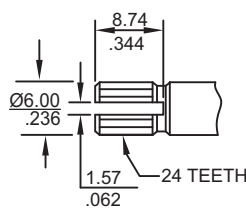
# Metal Shaft, Bushing Mount, Solder Lug Terminals



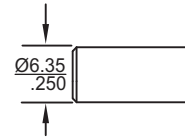
# Shaft Trim



F - Flat



K - Slot & Knurled



R - Round

DIMENSION: mm / inch

# Ordering Information

<b>450G</b>	<b>T</b>	<b>2</b>	<b>4</b>	<b>K</b>	<b>253</b>	<b>B</b>	<b>4</b>	<b>S</b>
<b>TERMINAL STYLE</b>	<b>BUSHING LENGTH</b>	<b>SHAFT LENGTH</b>	<b>SHAFT TRIM</b>	<b>RESISTANCE CODE</b>	<b>TOLERANCE</b>	<b>TAPER</b>	<b>TORQUE</b>	
T - SOLDER LUG	2 - .250" 3 - .375" 4 - .500" 5 - .625" 6 - .750"	4 - .500" 5 - .625" 6 - .750" 7 - .875" 8 - 1.00" 9 - 1.125"	R - ROUND F - FLAT K - SLOT & KNURLED	<b>CODE RESISTANCE</b> 253 25 K 503 50 K 104 100 K 254 250 K 504 500 K 105 1 M	A - ± 10% B - ± 20%	1 - LINEAR (STD. D) 2 - 10% AUDIO (A) 3 - LINEAR (SPL. D) 4 - 15% AUDIO (B) 5 - 5% AUDIO (C) 6 - 20% AUDIO (BD) 7 - 25% AUDIO (H) 8 - 30% AUDIO (J)	S - STANDARD L - LOW TORQUE	

Please consult factory for custom features not listed.

## X-ON Electronics

Largest Supplier of Electrical and Electronic Components

*Click to view similar products for [Potentiometers](#) category:*

*Click to view products by [CTS](#) manufacturer:*

Other Similar products are found below :

[58C2-2](#) [590SX1N32F103SS](#) [591SXJ48S252SC](#) [591SXP56S252SC](#) [591SXP56S503SC](#) [D31409](#) [70B1G048K502X-A](#) [70B1M032S502W](#)  
[70B1N056S202W](#) [70B8N056F502W](#) [70J8N048S104U](#) [70L1N040P103W](#) [70L1N048P103X](#) [70L1N048S103W](#) [GA2L040S102UC](#)  
[GA2L040S103UC](#) [GS1G044P103UA](#) [GS1N048P103UA](#) [GS1T032S103UA](#) [A43-1500](#) [A43-20K](#) [A47-200K](#) [A4720K](#) [RA20LASD251A](#)  
[132-2-0-202](#) [132-0-0-202](#) [RK14K1220-F25-C0-A103](#) [RK14K1220F25C0C104](#) [RK14K1220-F25-C1-B103](#) [14910FAGJSX10102KA](#)  
[14910FBGLFY00103KA](#) [14910AABHSX10103KA](#) [14910FAGJSX10104KA](#) [152-01031](#) [C0342008 5K](#) [P270-109A](#) [J97589](#) [23M728](#)  
[248BBHS0XB25104MA](#) [RV170F-10-15R1-B500K-0021](#) [RV8NAYSB104A](#) [917523A](#) [A43-40](#) [A43-750](#) [A43S-5](#) [A47-15K](#) [A4750K](#)  
[SPPG048S103U](#) [SPPG056P103U](#) [SWE-10](#)