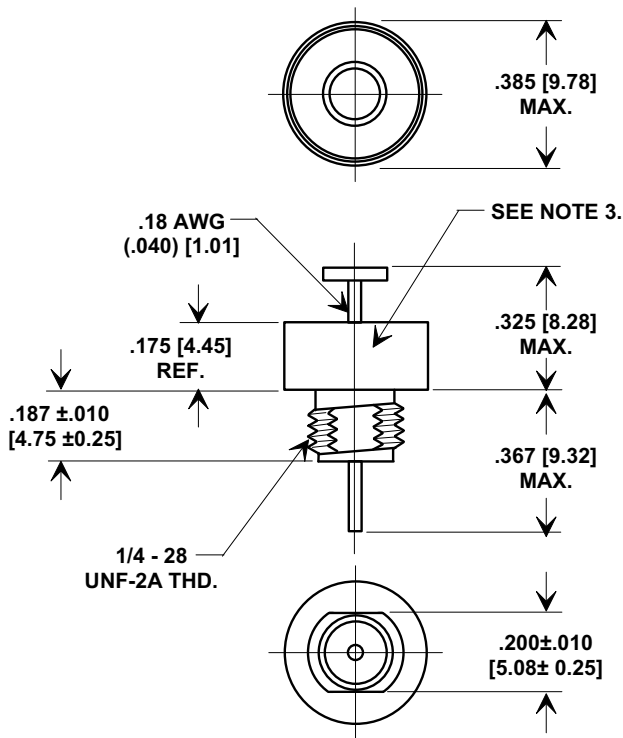
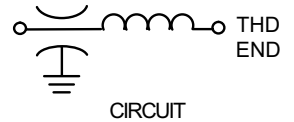
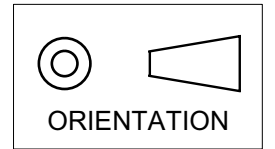


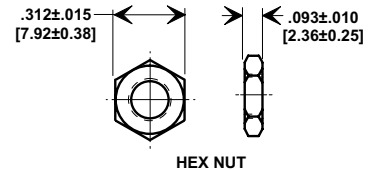
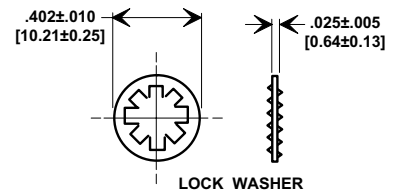
Electrical Testing
per Tusonix standard
test plans and Mil-Std-202
Test Methods.

MARKETING SALES DRAWING
DIMENSIONS IN INCHES - DO NOT SCALE THIS DRAWING
DIMENSIONS IN METRIC - []



NOTES:

1. TUSONIX STANDARD PART NUMBER: 4600-050.
TUSONIX RoHS COMPLIANT PART NUMBER: 4600-050 LF.
CUSTOMER MUST SPECIFY STANDARD OR RoHS PART NUMBER WHEN ORDERING.
2. MATERIALS:
BUSHING - TIN PLATED STEEL.
LEAD STANDARD PART; SOLDER PLATED COPPER.
RoHS PART; SILVER PLATED COPPER.
NUT - TIN PLATED BRASS.
L"WASHER - TIN PLATED PHOSPHOR BRONZE.
3. PART MARKING: TRADEMARK AND VARIATION NUMBER.
STANDARD PART: BLACK INK. RoHS PART: GREEN INK.
4. MOUNTING TORQUE: 8 lb - ins. max.
5. DCR - .01 max.
6. MAX. SOLDER TEMPERATURE 500°F.



MIN. CAP (UF)	DWV (VDC)	I.R. MIN. @ 100 (VDC.)	WORKING VOLTAGE D.C.		CURRENT DC (AMPS).	MIN. NO LOAD INSERTION LOSS (dB) @ 25°C PER MIL-STD-220					TEMP. CHARAC.	
			85°C	125°C		30 KHz	100 KHz	300 KHz	1 MHz	10 MHz		1 GHz
1.4	300	10 G	100	70	15	15	25	34	44	60	70	X7W

REVISION RECORD Original Release C.O. 6769 METRIC DIMS & NOTES ADDED. E.C. 7-17-92 6789 WVDC REVISED 100 & 70 WERE 80 & 50. L.E. 10-26-92 6992 RDN TO COMP FMT. S.M. 02-14-02 20020213-4-03 WORKING VOLTAGE REV'D 100, 70 WERE 80, 50 & TEMP. CHARAC. ADDED 20020903-1-02 ADDED NOTE S 1 & 3. REVISED NOTE 2. S.M. 06-24-05 20050608-2-02	--TOLERANCES-- Unless Otherwise Specified		Title COAXIAL BROADBAND - "C"	
	DECIMAL ±	ANGLES ±	Drawn S.M. 02-14-02	Scale 2 X
	TUSONIX TUCSON, ARIZONA		Approved T.C. 02-14-02	
	A	4600-050		

X-2015 Rev-0

X-ON Electronics

Largest Supplier of Electrical and Electronic Components

Click to view similar products for [EMI Feedthrough Filters](#) category:

Click to view products by [CTS](#) manufacturer:

Other Similar products are found below :

[FN7611-63-M6](#) [FN7612-10-M3](#) [FN7660-100-M8](#) [1202F-054](#) [1609991-8](#) [1609992-2](#) [16DFC6-C](#) [16FFD6-HE](#) [2-1609992-2](#) [2443-007-X5S0-102MLF](#) [2443-007-X5W0-502ZLF](#) [2463-001-X5S0-471MLF](#) [1609990-8](#) [1609991-3](#) [1609992-1](#) [1609992-3](#) [1609993-1](#) [1609993-7](#)
[200AFC6-P](#) [200DFC6-P](#) [FN7510-100-M8](#) [FN7510-32-M4](#) [FN7562-100-M8](#) [FN7562-200-M10](#) [FN7563-100-M8](#) [FN7611-10-M3](#) [FN7612-63-M6](#) [FN7661-16-M4](#) [2450-001-X5U0-102PLF](#) [2499-003-X5S0-152MLF](#) [32AFC6-H](#) [4100-000LF](#) [4201-050LF](#) [4204-001LF](#) [4253-002LF](#)
[4306-019LF](#) [4101-004LF](#) [4201-003LF](#) [4208-000LF](#) [4600-067](#) [094-6526-0000](#) [100AFC6-G](#) [10AFC6-B](#) [10DFC6-C](#) [1-1609990-3](#) [1-1609990-7](#) [1-1609992-8](#) [1-1609990-1](#) [1-1609991-1](#) [FN7514-32-M4](#)