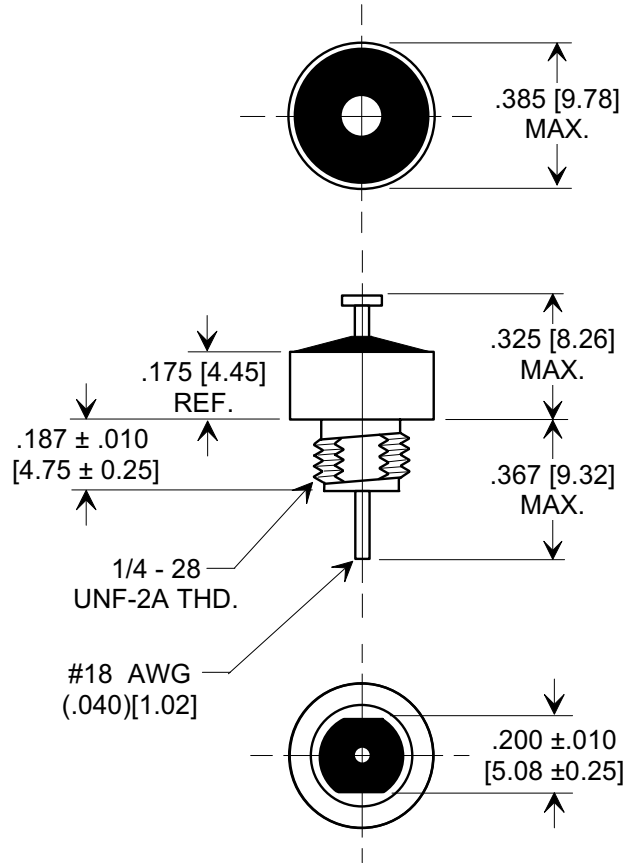
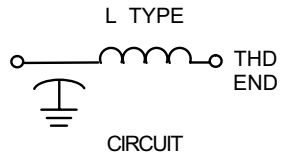
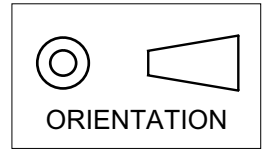


# MARKETING SALES DRAWING

DIMENSIONS IN INCHES - DO NOT SCALE THIS DRAWING  
 DIMENSIONS IN METRIC - [ ]

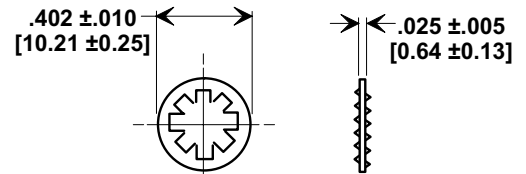
Electrical Testing  
 per Tusonix standard  
 test plans and Mil-Std-202  
 Test Methods.



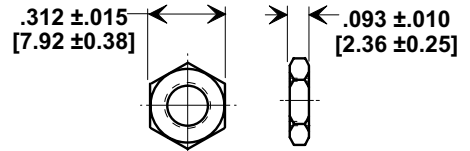
NOTES:

- TUSONIX STANDARD PART NUMBER: 4600-053.  
 TUSONIX RoHS COMPLIANT PART NUMBER: 4600-053 LF.  
 CUSTOMER MUST SPECIFY STANDARD OR RoHS PART NUMBER WHEN ORDERING.
- MATERIALS:  
 BUSHING - TIN PLATED STEEL.  
 LEAD STANDARD PART; SOLDER PLATED COPPER.  
 RoHS PART; SILVER PLATED COPPER.  
 NUT - TIN PLATED BRASS.  
 L"WASHER - TIN PLATED PHOSPHOR BRONZE.
- PART MARKING: TRADEMARK AND VARIATION NUMBER.  
 STANDARD PART: BLACK INK. RoHS PART: GREEN INK.
- MOUNTING TORQUE: 8 lb - ins. max.
- DCR - .01Ω max.
- MAX. SOLDER TEMPERATURE 500°F.

MOUNTING HARDWARE



LOCK WASHER



HEX NUT

MIN. Cx (μF)	WVDC		CURRENT DC (AMPS)	D.W.V. (VDC)	I.R. MIN.	MIN. NO LOAD INSERTION LOSS (dB) PER MIL-STD 220 @ +25°C						TEMP. CHARA.
	85°C	125°C				30 KHz	100 KHz	300 KHz	1 MHz	10 MHz	1GHz	
1.4	80	50	15	300	500 M Ω	15	25	34	44	60	70	X7R

X-2015 Rev-0	REVISION RECORD		<b>TUSONIX</b> TUCSON, ARIZONA	--TOLERANCES-- Unless Otherwise Specified		Title <b>COAXIAL BROADBAND - "L"</b>	
	0	Original Release C.O. 930129-1		DECIMAL ±			
	4	-066 ADDED 0-400 TO 125°C. S.M. 11-18-97		ANGLES ±		Drawn S.M. 08-19-02	Scale 2 X
	5	1997111-9-03 REVISED DWG & DRAWING MADE FOR EACH VAR. S.M. 08-19-02				Approved B.Mc. 08-19-02	
		20020819-3-01 REVISED & ADDED NOTES. S.M. 01-05-06			A		4600-053
		20060104-3-01					

## X-ON Electronics

Largest Supplier of Electrical and Electronic Components

*Click to view similar products for [EMI Feedthrough Filters](#) category:*

*Click to view products by [CTS](#) manufacturer:*

Other Similar products are found below :

[FN7611-63-M6](#) [FN7612-10-M3](#) [FN7660-100-M8](#) [1202F-054](#) [1609991-8](#) [1609992-2](#) [16DFC6-C](#) [16FFD6-HE](#) [2-1609992-2](#) [2443-007-X5S0-102MLF](#) [2443-007-X5W0-502ZLF](#) [2463-001-X5S0-471MLF](#) [1609990-8](#) [1609991-3](#) [1609992-1](#) [1609992-3](#) [1609993-1](#) [1609993-7](#)  
[200AFC6-P](#) [200DFC6-P](#) [FN7510-100-M8](#) [FN7510-32-M4](#) [FN7562-100-M8](#) [FN7562-200-M10](#) [FN7563-100-M8](#) [FN7611-10-M3](#) [FN7612-63-M6](#) [FN7661-16-M4](#) [2450-001-X5U0-102PLF](#) [2499-003-X5S0-152MLF](#) [32AFC6-H](#) [4100-000LF](#) [4201-050LF](#) [4204-001LF](#) [4253-002LF](#)  
[4306-019LF](#) [4101-004LF](#) [4201-003LF](#) [4208-000LF](#) [4600-067](#) [094-6526-0000](#) [100AFC6-G](#) [10AFC6-B](#) [10DFC6-C](#) [1-1609990-3](#) [1-1609990-7](#) [1-1609992-8](#) [1-1609990-1](#) [1-1609991-1](#) [FN7514-32-M4](#)