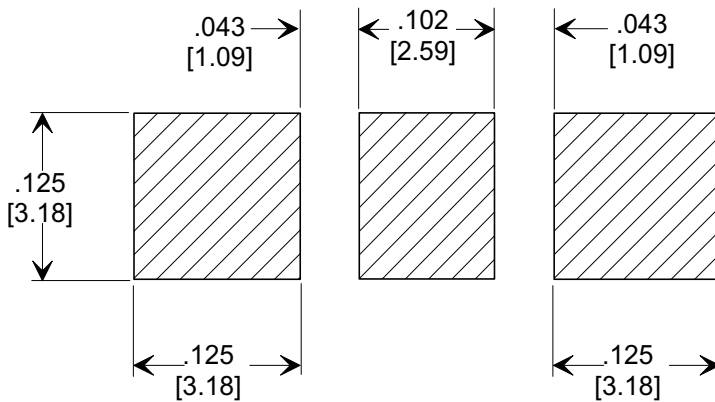
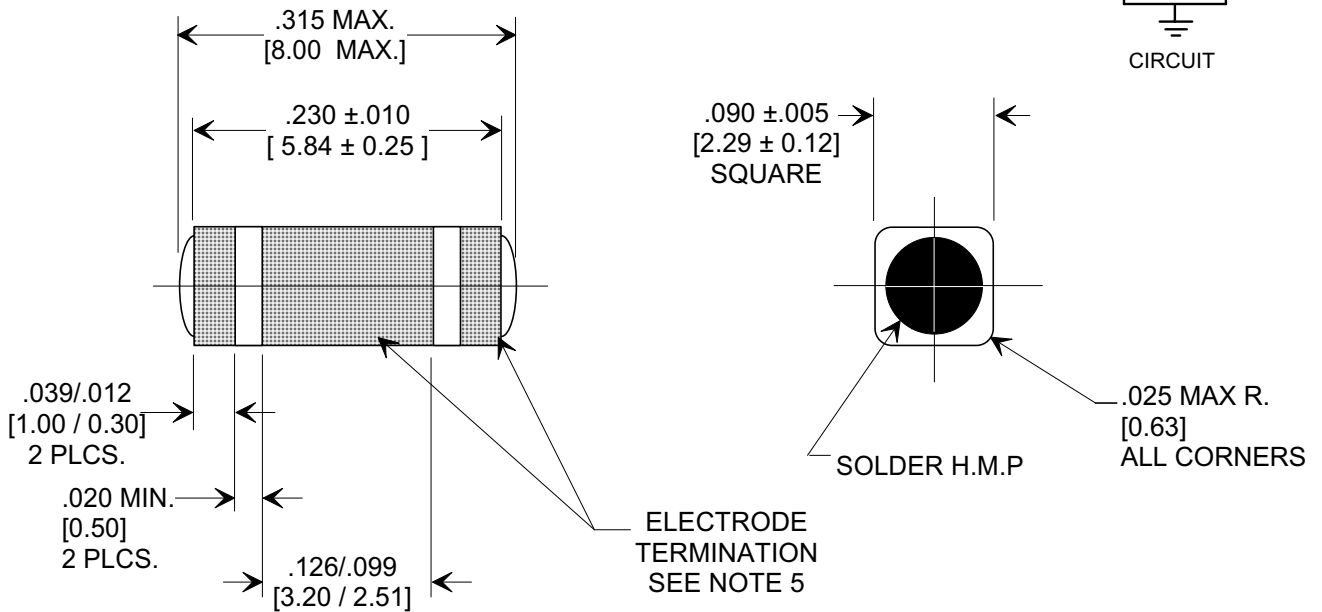
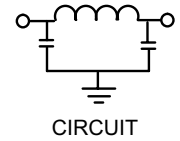
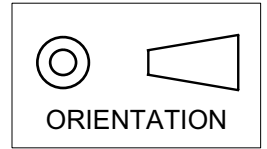


**MARKETING SALES DRAWING**  
**DIMENSIONS IN INCHES - DO NOT SCALE THIS DRAWING**  
**DIMENSIONS IN METRIC [ ]**

Electrical Testing  
 per Tusonix standard  
 test plans and Mil-Std-202  
 Test Methods.



1. INDUCTANCE TO BE 0.1 H MINIMUM.
2. PACKAGE: BULK OR BLISTER TAPE TO IEC-60286-3 TYPE II AND EIA-481-A.
3. TUSONIX STANDARD PART NUMBER: 4700-003.  
TUSONIX RoHS COMPLIANT PART NUMBER: 4700-003 LF.  
CUSTOMER MUST SPECIFY STANDARD OR RoHS PART NUMBER WHEN ORDERING.
4. PART MARKING: STANDARD PART: NO MARKING.  
RoHS PART: LABELED ON PACKAGING ONLY.
5. ELECTRODE TERMINATION: STANDARD 60/40 SOLDER; RoHS COMPLIANT - MATTE TIN.

CAP.	TOLERANCE	WVDC		TEST VOLTAGE	I.R.MIN. @ 100 (VDC.)	IDC	TYPICAL NO LOAD INSERTION LOSS dB AT 25°C PER MIL-STD-220		
		85°C	+125°C				10 MHZ	100 MHZ	1 GHZ
2000 pF	GMV	100	100	300 VDC	10 G	10 A	10	45	70

X-2015 Rev-0

REVISION RECORD	Original Release C.O. <b>941020-1</b>	REISSUE <b>941020-1</b> DIM. .230 WAS .238 E.C. 11-16-94	REISSUE <b>941020-1</b> REVISED DWG. ORIENTATION SYMBOL & I.R. MIN. @ 100 (VDC) ADDED S.M. 02-13-03	REISSUE <b>20030213-1-12</b> REVISED DRAWING. S.M. 06-20-03	REISSUE <b>20030619-2-01</b> ADDED NOTES 3,4 & 5. S.M. 06-10-05	REISSUE <b>20050607-5-02</b>	--TOLERANCES-- Unless Otherwise Specified	Title <b>SURFACE MOUNT SQUARE STYLE PI FILTER</b>
	DECIMAL ± .005 [0.13]						Drawn FG 9-9-94	
	ANGLES ±						Approved NV 9-9-94	
	<b>TUSONIX</b> TUCSON, ARIZONA						<b>A</b>	<b>4700-003</b>

## X-ON Electronics

Largest Supplier of Electrical and Electronic Components

*Click to view similar products for [cts manufacturer](#):*

Other Similar products are found below :

[744C083333JP](#) [296UD504B1N](#) [262XR102B](#) [744C083102JP](#) [CB3LV-3C-32M7680](#) [744C083222JP](#) [743C083103JP](#) [770101223](#)  
[026TB32R253B1A1](#) [CB3-3C-50M0000](#) [ATS040SM-1](#) [APF30-30-13CB/A01](#) [MXO45HST-3C-16M0000](#) [ATS061C](#) [743C083104JP](#)  
[744C083472JP](#) [77083103P](#) [218-10LPSTRF](#) [O7050147456MFDA4SC](#) [402WF20012IMR](#) [KFF6516A](#) [194-8MST](#) [742C083330JPTR](#) [750-](#)  
[101-R120](#) [TFE322T32K7680R](#) [TX0506-1B](#) [766143221GP](#) [77061333P](#) [403C35D12M00000](#) [CTS-1621](#) [284TBCF502A26A1](#) [766163560GP](#)  
[CB3-3I-20M0000](#) [4400-032](#) [ATS12ASM-1](#) [201XR104B](#) [770103101P](#) [CA25C5003HLT](#) [209-2MSF](#) [6740-2015](#) [CB3-3C-1M5440](#) [T8031-5V](#)  
[767163104D](#) [PB1-36ND](#) [ATS049BSM-1E](#) [4400-095LF](#) [209-6LPST](#) [MP100B](#) [767141102GP](#) [766145191APTR7](#)