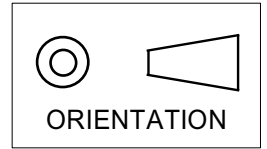


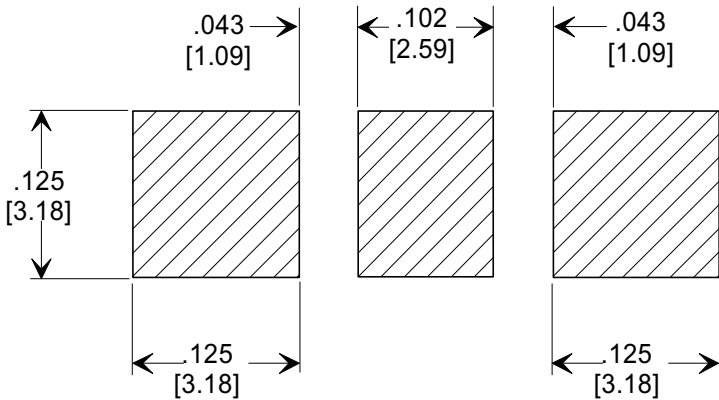
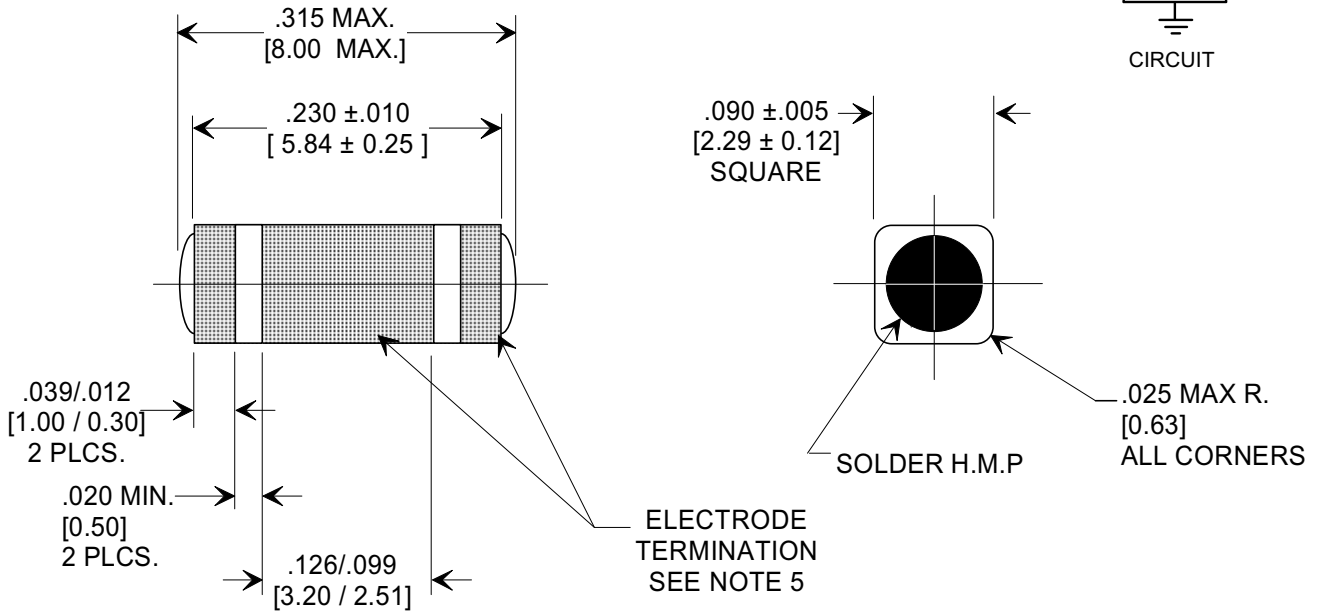
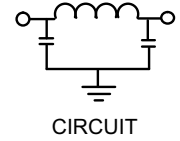
# MARKETING SALES DRAWING

**DIMENSIONS IN INCHES - DO NOT SCALE THIS DRAWING**  
**DIMENSIONS IN METRIC [ ]**

This drawing is the property of Tusonix, Inc., and may not be used, reproduced, published or disclosed to others without expressed authorization by Tusonix Inc.



**Electrical Testing**  
per Tusonix standard  
test plans and Mil-Std-202  
Test Methods.



**SUGGESTED MOUNTING PATTERN**

1. INDUCTANCE TO BE 0.1  $\mu$ H MINIMUM.
2. PACKAGE: BLISTER TAPE TO IEC-60286-3 TYPE II AND EIA-481-A. FOR 2,000 PIECE REEL ADD "M" TO THE PART NUMBER FOR 7,000 PIECE REEL ADD "T" TO THE PART NUMBER
3. TUSONIX NON-RoHS PART NUMBER: 4700-003 M OR 4700-003 T . TUSONIX RoHS COMPLIANT PART NUMBER: 4700-003 M LF OR 4700-003 T LF. CUSTOMER MUST SPECIFY STANDARD OR RoHS PART NUMBER WHEN ORDERING.
4. PART MARKING: STANDARD PART: NO MARKING. RoHS PART: LABELED ON PACKAGING ONLY.
5. ELECTRODE TERMINATION: STANDARD 60/40 SOLDER; RoHS COMPLIANT - MATTE TIN.

CAP.	TOLERANCE	WVDC		TEST VOLTAGE	I.R.MIN. @ 100 (VDC.)	IDC	TYPICAL NO LOAD INSERTION LOSS dB AT 25°C PER MIL-STD-220		
		85°C	+125°C				10 MHZ	100 MHZ	1 GHZ
2000 pF	GMV	100	100	300 VDC	10 G $\Omega$	10 A	10	45	70

X-2015 Rev-0

REVISION RECORD	0	Original Release	941020-1	ADDED DC COLUMN	E.C. 10-26-94
	1	REISSUE	941020-1	DIM. .230 WAS .238	E.C. 11-16-94
	2	REISSUE	941020-1	REVISED DWG. ORIENTATION SYMBOL & I.R. MIN. @ 100 (VDC) ADDED S.M. 02-13-03	
	3	20030213-1-12	REVISED DRAWING.	S.M. 06-20-03	
	4	20030619-2-01	ADDED NOTES 3,4 & 5.	S.M. 06-10-05	
	5	20050607-5-02	ADDED PROPERTY NOTE.	S.M. 03-09-07	
	6	20070301-1-01	NOTES 2,3 REVISED	L.E. 10-08-12	
	B	ECO-3124			
		--TOLERANCES-- Unless Otherwise Specified		Title	
		DECIMAL $\pm$ .005 [0.13]		SURFACE MOUNT SQUARE STYLE PI FILTER	
		ANGLES $\pm$		Drawn	Scale
		TUSONIX TUCSON, ARIZONA		FG 9-9-94	7 X
		A		Approved	
				NV 9-9-94	
				4700-003	

## X-ON Electronics

Largest Supplier of Electrical and Electronic Components

*Click to view similar products for [Feed Through Capacitors](#) category:*

*Click to view products by [CTS](#) manufacturer:*

Other Similar products are found below :

[PSM4-402Z-20B](#) [CKD110JB1E470S](#) [CKD510JB1E473S](#) [CKD510JB1H221S](#) [CKD510JB1H470S](#) [4700-003MLF](#) [4700-053LF](#) [4701-001MLF](#) [4701-002MLF](#) [SSM1-402E-10B](#) [SSM1-402E-10T1](#) [SSM1-152P-05T1](#) [4700-009MLF](#) [SSM1-101Z-05B](#) [SSM1F-402E-10T1](#) [SSM1-202P-05T1](#) [0805J0500471MATE03](#) [PSM4-103Z-20T0](#) [0805J1000470MATE03](#) [SF0603C101SBNBB](#) [SSM1-402Z-10T1](#) [PSM4F-402Z-20T0](#) [CX0603MRX7R6BB104](#) [CX1206MKX7R9BB104](#) [CX0603MRX7R9BB103](#) [YFF15PC0J105MT000N](#) [NFM15CC222D1A3D](#) [NFM15CC223C1C3D](#) [NFM15CC223C1A3D](#) [NFM18PC225B1A3D](#) [CX0603MRX5R6BB224](#) [CX0603MRX7R9BB103](#) [CX0805MRX7R0BB103](#) [CX0805MRX7R8BB223](#) [CX1206MKX7R7BB224](#) [CX1206MKX7R9BB104](#) [NFM31HK104R1H3L](#) [NFM31HK223R1H3L](#) [NFM15PC224R1A3D](#) [DSS1NB32A223Q91A](#) [DSS1NB31H104Q91A](#) [NFE31PT101C1E9L](#) [NFE31PT220R1E9L](#) [NFE61PT330B1H9L](#) [NFE61PT681B1H9L](#) [NFM31KC104R1H3L](#) [NFM41CC223R2A3L](#) [DSS1NB32A103Q91A](#) [DSS1NB32A102Q91A](#) [NFE31PT471F1E9L](#)