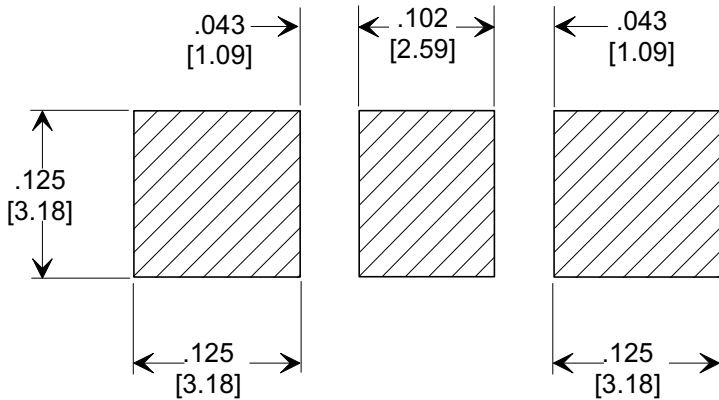
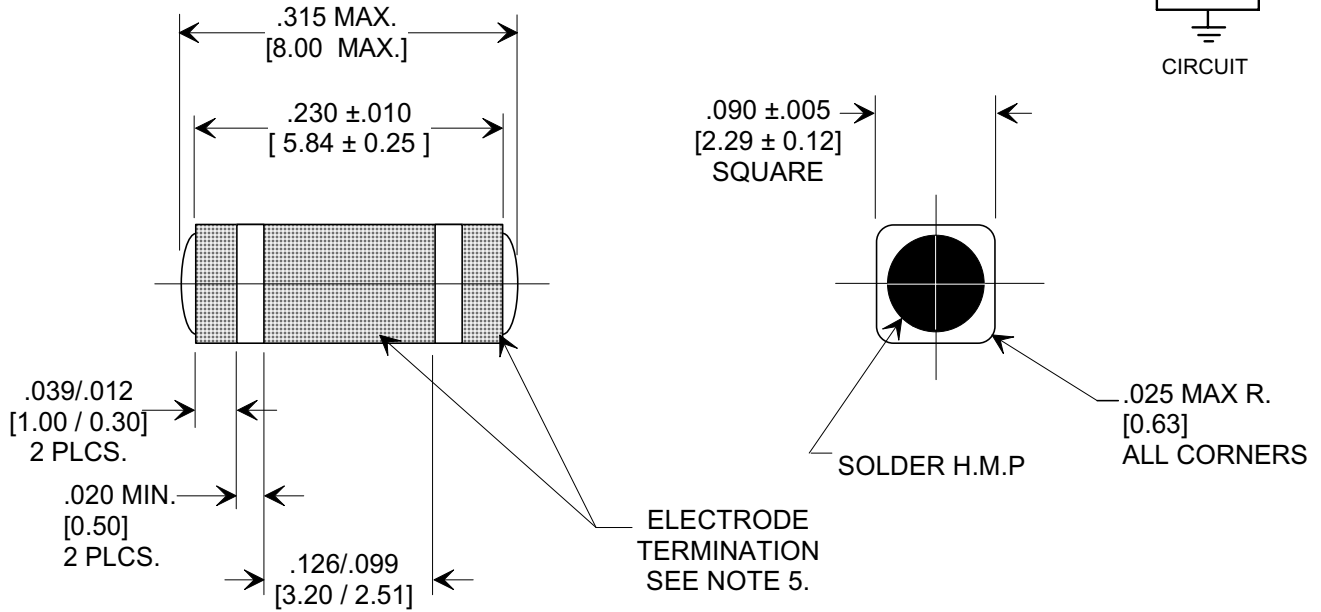
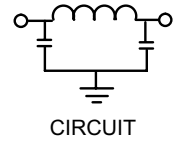
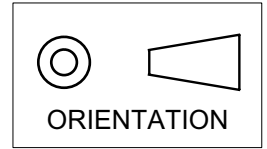


MARKETING SALES DRAWING

DIMENSIONS IN INCHES - DO NOT SCALE THIS DRAWING
 DIMENSIONS IN METRIC []

Electrical Testing
 per Tusonix standard
 test plans and Mil-Std-202
 Test Methods.



SUGGESTED MOUNTING PATTERN

1. INDUCTANCE TO BE 0.1 μ H MINIMUM.
2. PACKAGE: BULK OR BLISTER TAPE TO IEC-60286-3 TYPE II AND EIA-481-A.
3. TUSONIX STANDARD PART NUMBER: 4700-005. TUSONIX RoHS COMPLIANT PART NUMBER: 4700-005 LF. CUSTOMER MUST SPECIFY STANDARD OR RoHS PART NUMBER WHEN ORDERING.
4. PART MARKING: STANDARD PART: NO MARKING. RoHS PART: LABELED ON PACKAGING ONLY.
5. ELECTRODE TERMINATION: STANDARD 60/40 SOLDER; RoHS COMPLIANT - MATTE TIN.

CAP.	TOLERANCE	WVDC		TEST VOLTAGE	I.R.MIN. @ 100 (VDC.)	IDC	TYPICAL NO LOAD INSERTION LOSS dB AT 25°C PER MIL-STD-220		
		85°C	+125°C				10 MHZ	100 MHZ	1 GHZ
1000 pF	GMV	100	100	300 VDC	10 G Ω	10 A	7	40	65

X-2015 Rev-0	REVISION RECORD
	Original Release
	0
	DELETED ITEMS 000, 001, 002 & 007. S.M. 01-16-97
	8
	970109-3
	DIM. .085 ±.005 WAS .083 ±.004. S.M. 07-1598
	9
	19980715-8-03
	ITEM 009 & ORIENTATION SYMBOL ADDED L.E. 06-18-01
	10
	20010618-5-01
	DIM .090 WAS .085. REVISED MOUNTING PAT. ADDED ITEMS FROM 4700-050. S.M. 09-19-01
	11
20010918-3-01	
REVISED DWG. DRAWING MADE FOR EACH VAR. S.M. 02-13-03	
12	
20030213-1-02	
REVISED DRAWING. S.M. 06-20-03	
13	
20030619-2-02	
REVISED NOTES. S.M. 06-20-03	
14	
20050916-1-02	

--TOLERANCES-- Unless Otherwise Specified DECIMAL ± .005 [0.13] ANGLES ±	Title SURFACE MOUNT SQUARE STYLE PI FILTER Drawn FG 9-9-94 Scale 7 X Approved NV 9-9-94
TUSONIX TUCSON, ARIZONA	A 4700-005

X-ON Electronics

Largest Supplier of Electrical and Electronic Components

Click to view similar products for [Feed Through Capacitors](#) category:

Click to view products by [CTS](#) manufacturer:

Other Similar products are found below :

[PSM4-402Z-20B](#) [CKD110JB1E470S](#) [CKD510JB1E473S](#) [CKD510JB1H221S](#) [CKD510JB1H470S](#) [4700-003MLF](#) [4700-053LF](#) [4701-001MLF](#) [4701-002MLF](#) [SSM1-402E-10B](#) [SSM1-402E-10T1](#) [SSM1-152P-05T1](#) [4700-009MLF](#) [SSM1-101Z-05B](#) [SSM1F-402E-10T1](#) [SSM1-202P-05T1](#) [0805J0500471MATE03](#) [PSM4-103Z-20T0](#) [0805J1000470MATE03](#) [SF0603C101SBNBB](#) [SSM1-402Z-10T1](#) [PSM4F-402Z-20T0](#) [CX0603MRX7R6BB104](#) [CX1206MKX7R9BB104](#) [CX0603MRX7R9BB103](#) [YFF15PC0J105MT000N](#) [NFM15CC222D1A3D](#) [NFM15CC223C1C3D](#) [NFM15CC223C1A3D](#) [NFM18PC225B1A3D](#) [CX0603MRX5R6BB224](#) [CX0603MRX7R9BB103](#) [CX0805MRX7R0BB103](#) [CX0805MRX7R8BB223](#) [CX1206MKX7R7BB224](#) [CX1206MKX7R9BB104](#) [NFM31HK104R1H3L](#) [NFM31HK223R1H3L](#) [NFM15PC224R1A3D](#) [DSS1NB32A223Q91A](#) [DSS1NB31H104Q91A](#) [NFE31PT101C1E9L](#) [NFE31PT220R1E9L](#) [NFE61PT330B1H9L](#) [NFE61PT681B1H9L](#) [NFM31KC104R1H3L](#) [NFM41CC223R2A3L](#) [DSS1NB32A103Q91A](#) [DSS1NB32A102Q91A](#) [NFE31PT471F1E9L](#)