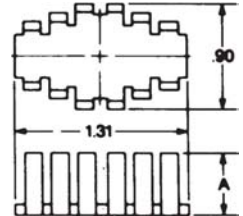


HEAT SINKS FOR METAL AND PLASTIC CASE, CASE-MOUNTED SEMICONDUCTORS



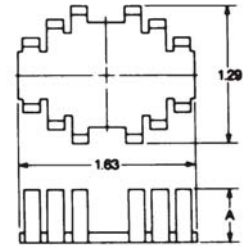
LA-A Series

Semiconductor Case Type	*Ø °C/W	Part Number		"A" Dim.
		Commercial Black	Military Black	
TO126/127/220	17.0	LAE66A3CB	—	0.75
TO126/127/220	14.7	LAE66A4CB	—	1.00



LA-B Series

Semiconductor Case Type	*Ø °C/W	Part Number		"A" Dim.
		Commercial Black	Military Black	
TO-3	14.1	LAIC3B2CB	LAIC3B2B	0.50
TO-3	12.0	LAIC3B3CB	LAIC3B3B	0.75
TO-3	14.1	LATO3B2CB	LATO3B2B	0.50
TO-3	12.0	LATO3B3CB	LATO3B3B	0.75

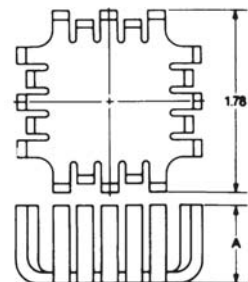


*Natural convection, case-ambient mounted on G1U board

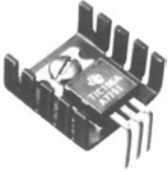


UP and UP1 Series

Semiconductor Case Type	*Ø °C/W	Part Number		"A" Dim.
		Commercial Black	Military Black	
TO-3	7.1	UP-TO3-CB	UP-TO3-B	1.00
TO-3	10.4	UP1-348-CB		0.50

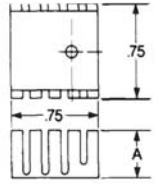


BOARD-MOUNTED HEAT SINKS



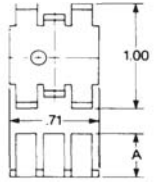
PC Series

Semiconductor Case Type	*Ø °C/W	Part Number		"A" Dim.
		Unplated	Commercial Black	
TO-126/127/220	27.3	PC1-1UB	PC1-1CB	.38



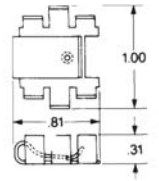
PA Series

Semiconductor Case Type	*Ø °C/W	Part Number		"A" Dim.
		Unplated	Commercial Black	
TO-126/127/220	28.8	PA1-1U	PA1-1CB	.50



PSC2 Series

Semiconductor Case Type	*Ø °C/W	Part Number	
		Unplated	Commercial Black
TO-220 (Anti-Rotation Tabs)	36.7	PSC2T2U	PSC2T2CB



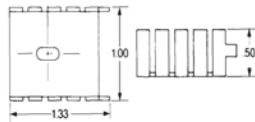
VERTICALLY MOUNTED HEAT SINKS WITH BOARD-MOUNTED TABS

Vertical Tab Mounted Heat Sinks



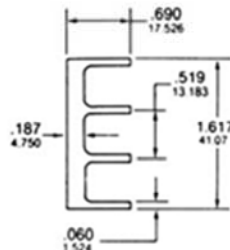
Fig. 1

Semiconductor Case Type	*Ø °C/W	Part Number	
		Unplated	Commercial Black
TO-126/127/220	20.0	PB1-36UB	PB1-36CB

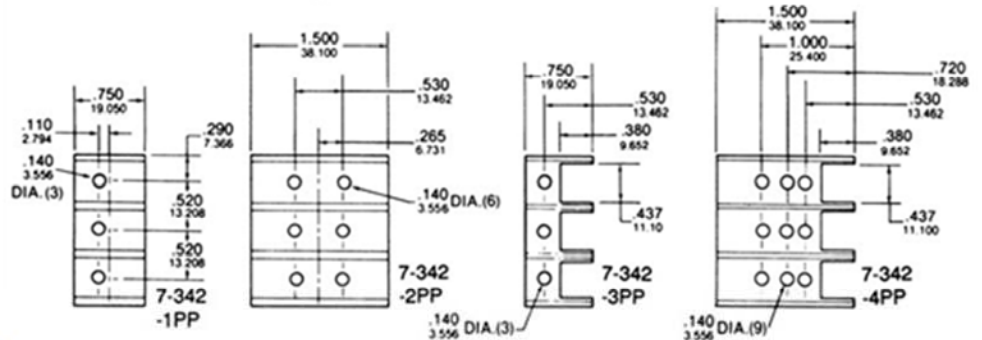
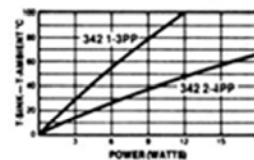


*Natural convection, case-ambient mounted on G10 board

7-342-1, -2, -3, -4

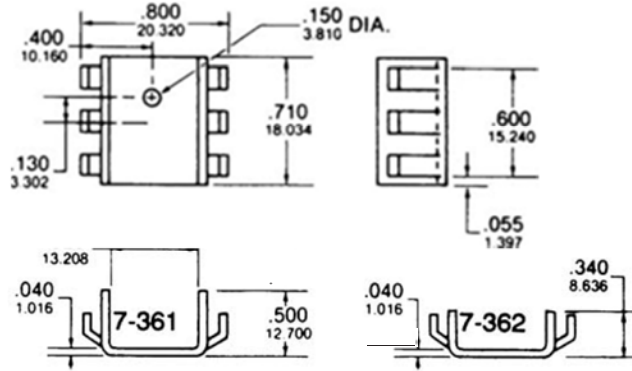


Material 6063-T5 Aluminum
Finish Black Anodize

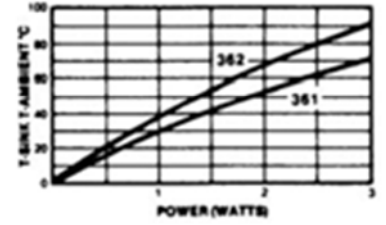


BOARD AND VERTICALLY MOUNTED HEAT SINKS

7-361 & 7-362



Material... 1100-H14 Aluminum
Finish..... Black Anodize



X-ON Electronics

Largest Supplier of Electrical and Electronic Components

Click to view similar products for [Heat Sinks](#) category:

Click to view products by [CTS](#) manufacturer:

Other Similar products are found below :

[581102B00000G](#) [656-15ABPE](#) [657-20ABPNE](#) [7020B-TC12-MTG](#) [73452PPBA](#) [7G0011A](#) [PF720G](#) [A22-4026](#) [120-1873-007](#) [HAH10L](#)
[1542616-1](#) [HS-2506-F1](#) [HS-87M0-F2](#) [218-40CTE3](#) [25-7520](#) [SW50-4G](#) [231-75PAB-13V](#) [231-75PAB-15V](#) [253-122ABE-22](#) [PSC22CB](#)
[HAF10L](#) [HAQ10T](#) [D10100-28](#) [BDN183CBA01](#) [3-21053-4](#) [32438](#) [TX0506-1B](#) [TX1806B](#) [LAE66A3CB](#) [WA-DT2-101E](#) [511-3U](#)
[73381PPBA](#) [73403PPBA](#) [7G0047C](#) [COMX-440-HSP](#) [510-12M](#) [D10650-40T5](#) [V8511 Y](#) [APF40-40-13CB/A01](#) [780653U04500G](#) [ATS-](#)
[54310K-C2-R0](#) [FK 216 CB SA](#) [FK 231 SA 220](#) [648-51AB](#) [657-20ABPESC](#) [2341BG](#) [679-25AG](#) [FK 212 CB SA](#) [FK225 SA L1](#) [680-5K](#)