

Material:

* Insulation:

Glass filled polyester UL 94V-0

* Contact: Brass

Ordering Code:

CA21 ** S A 1 *0
 ① ② ③ ④ ⑤ ⑥

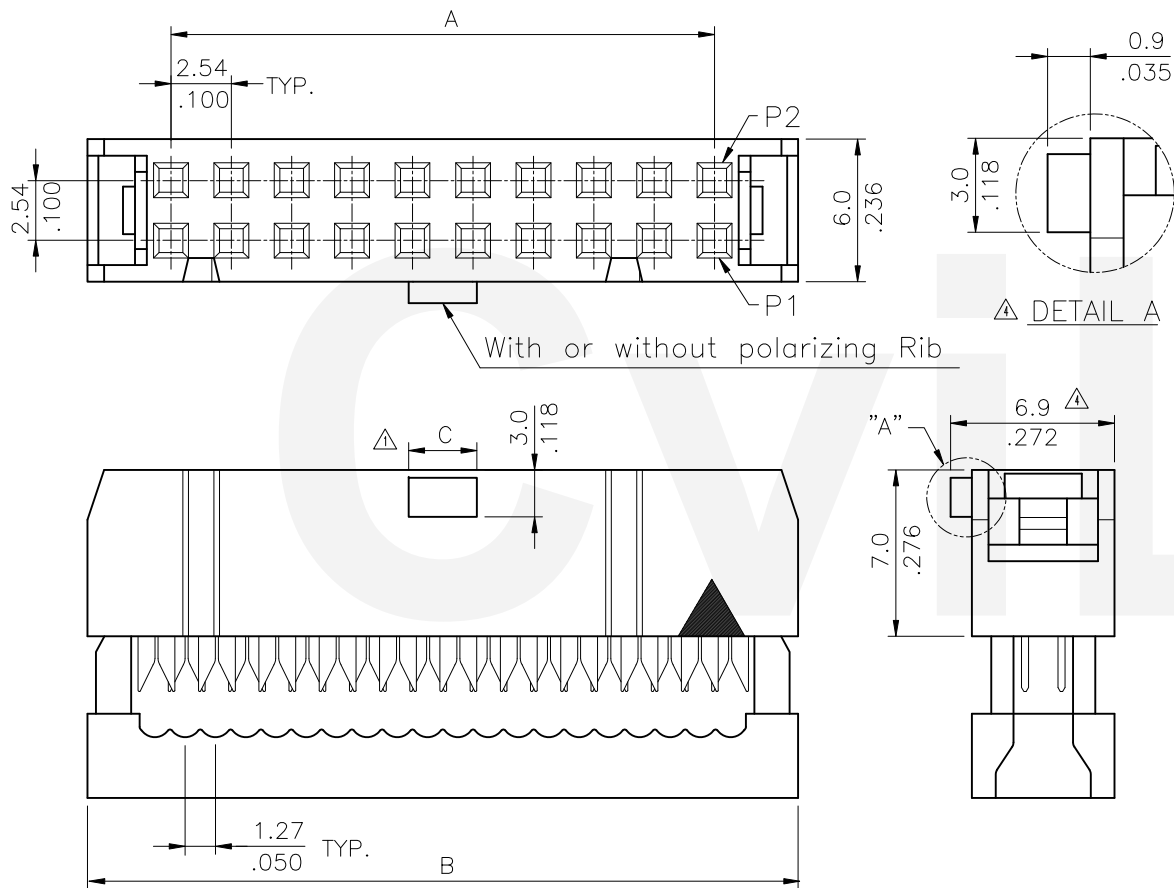
- ① Series No.
- ② No. of Circuits
- ③ Contact type: S= Socket

④ Plating option:

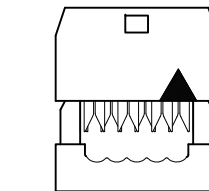
- A= Selective Gold flash plated over 1.27μm(50μ") Nickel
- B= Selective 0.38μm(15μ") Gold plated over 1.27μm(50μ") Nickel
- C= Selective 0.76μm(30μ") Gold plated over 1.27μm(50μ") Nickel

⑤ Color: 1= Black

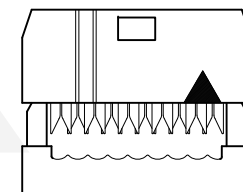
- ⑥ Other Options:
 00= Standard
 A0= Without Polarizing Rib



Circuits	Dimension		
	A	B	C
6	5.08(.200)	12.32(.472)	1.85(.072)
8	7.62(.300)	14.86(.585)	1.85(.072)
10	10.16(.400)	17.40(.685)	3.50(.138)
12	12.70(.500)	19.94(.785)	3.50(.138)
14	15.24(.600)	22.48(.885)	3.50(.138)
16	17.78(.700)	25.02(.985)	3.50(.138)
20	22.86(.900)	30.10(1.185)	3.50(.138)
24	27.94(1.100)	35.18(1.381)	3.50(.138)
26	30.48(1.200)	37.72(1.485)	3.50(.138)
30	35.56(1.400)	42.80(1.685)	3.50(.138)
34	40.64(1.600)	47.88(1.885)	3.50(.138)
36	43.18(1.700)	50.42(1.985)	3.50(.138)
40	48.26(1.900)	55.50(2.185)	3.50(.138)
44	53.34(2.100)	60.58(2.385)	3.50(.138)
50	60.96(2.400)	68.20(2.685)	3.50(.138)



△ 6,8 Circuits



10,12 Circuits

RoHS Compliant

△8	Yushu	12/12-19'	ECRT119066/ECNT120007		DATE	UNIT: mm / inch	TITLE: 2.54MM(.100")	瀚荃股份有限公司 CviLux Corporation			
△7	Ken	2/12-19'	ECNT119043	DRAWN BY: Yushu	1/9-20'	TOLERANCE UNLESS OTHERWISE SPECIFIED	RIBBON CABLE I.D.C. CONNECTOR				
△6	Ken	1/9-17'	ECRB116097/ECNT117076	ENGINEER: Sun	1/13-20'	.X ± 0.30/.012 .X' ± 1"	MATERIAL:	DRAWING NO.	CA2101SM	PART NO.	CA21**S*1*0
△5	Kevin	4/8-09'	ECN09188	CHECKED BY: Eislely	1/20-20'	.XX ± 0.20/.008 .X' ±	FINISH:	SCALE	3 / 1	SHEET	1 OF 1
SYM	NAME	DATE	REVISIONS	APPROVED BY: Eislely	1/20-20'	.XXX ± 0.10/.004 .XX' ±					

X-ON Electronics

Largest Supplier of Electrical and Electronic Components

Click to view similar products for [I/O Connectors](#) category:

Click to view products by [Cvilux](#) manufacturer:

Other Similar products are found below :

[571763P](#) [D20419-211](#) [72.250.1628.2](#) [72.250.2428.2](#) [76.350.0729.0](#) [76871-1403](#) [PCR-E36PM](#) [PCS-XE26LKA](#) [PCS-XES68MS+](#)
[G38A71314B](#) [9776-18-6](#) [1571250010](#) [157-22500-3](#) [MS3471L14-19P L/C](#) [192991-0703](#) [91-644626-35P](#) [172501-6002](#) [FCN-260C008-A/L0](#)
[FCN-260C024-AL0](#) [FCN-261Z008](#) [2000314-1](#) [200331-1](#) [PCS-E28FS+](#) [PCS-XE26SLFD+](#) [PCS-XE26SLFDT+](#) [G730VID08BDC24](#) [HDMR-](#)
[29-01-S-SM-TR](#) [HDRA-E68W1LFDTC-SL+](#) [HDR-E14MSG1+](#) [54182-0605](#) [UE86K842720321](#) [38113800006](#) [DP3AR020WQ1R200](#)
[Z4.102.0680.0](#) [500-1040](#) [500-1052](#) [500-1054](#) [ZP-4008-66L](#) [10-565995-597N](#) [10-584459-12P](#) [5554841-1](#) [SM3106F14S-7S-LC](#)
[U90B3054061110](#) [U65-E04-4020](#) [ZPF000000000097891](#) [557-262M2-06C](#) [PCS-96LFD+](#) [60-042222-02S](#) [10099439-003C-TRLF](#) [226-0348-](#)
[000](#)