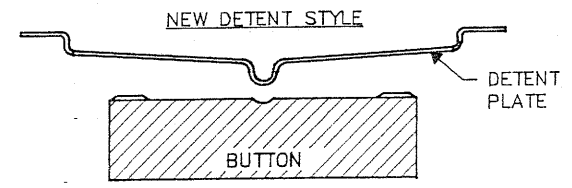
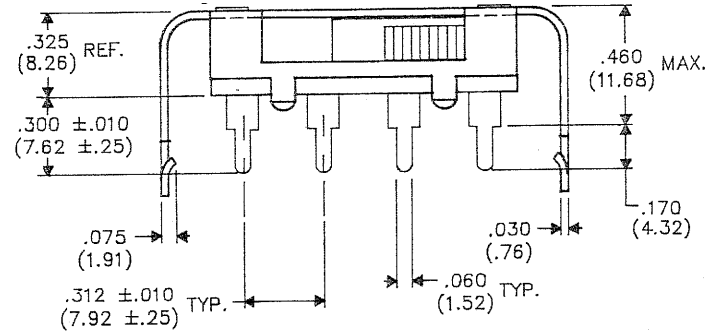
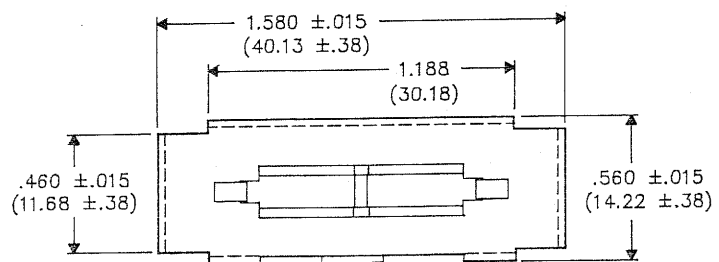


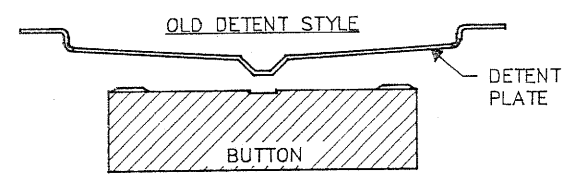
DIMENSIONS IN INCHES (MILLIMETERS)  
DO NOT SCALE DRAWING...

Drawing No. **G-386-0020**



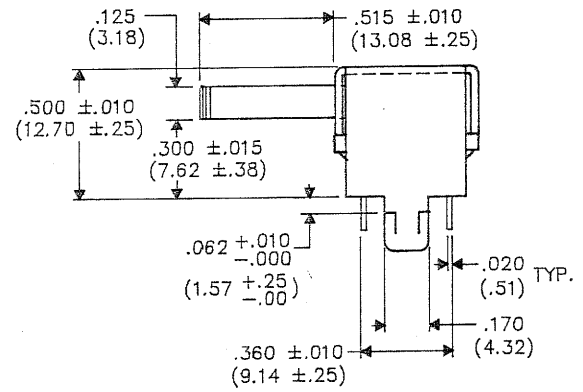
OPERATING FORCE (oz.)

C-E	E-C
16-32	4-13



OPERATING FORCE (oz.)

C-E	E-C
16-32	4-13



REVISIONS	
0	RELEASED DWG 7-15-94 BSE
1	CHANGED OPERATING FORCE C-E ON NEW DETENT STYLE FROM 18-36 TO 16-32. ADDED ID. NO.. DWG 8-19-94 AUG 25 1994 BSE

**CW INDUSTRIES**  
Southampton, Pa. 18966

TOLERANCES UNLESS OTHERWISE SPECIFIED  
2 Place decimal ±.010 METRIC  
3 Place decimal ±.005 1 Place dec. ±.25 MM  
Angles ±1° 2 Place dec. ±.13 MM

Made for: CW IND.

Drawn by: DGW 7-15-94

Checked by: G. GULD 7-21-94

Approval: *BSE* 7-21-94

Title  
**STD. SWITCH ASSEMBLY "SYDEWYNDER" DP/3P**

Division  
**SWITCH**

Drawing No.  
**G-386-0020**

**MASTER**

## X-ON Electronics

Largest Supplier of Electrical and Electronic Components

*Click to view similar products for [Slide Switches](#) category:*

*Click to view products by [CW Industries](#) manufacturer:*

Other Similar products are found below :

[6-1437581-1](#) [M43R](#) [MHS123K15D](#) [MHS133K](#) [MHSS1104A](#) [MMD](#) [GH49S010001](#) [MSS12A](#) [EPS1PC1](#) [1825074-1](#) [1825160-3](#) [1825167-2](#)  
[1825289-7](#) [K232CB](#) [25139NLDB](#) [25449NAH](#) [SLB1240R45](#) [1825078-1](#) [1825080-4](#) [1825269-1](#) [1825270-2](#) [STS141RA04](#) [T2215BEN506](#)  
[GH46P000001](#) [GH46W000001](#) [GH49P010001](#) [25339NA](#) [M42A](#) [TG36P000000](#) [TG36P000050](#) [AYZ0202AG](#) [47227LFE](#) [49331L](#) [50208L](#)  
[L203091MS02Q](#) [4-1437581-7](#) [X2225CR-437W](#) [49329L](#) [1101M1S3ZB8E2](#) [1-1437581-1](#) [MSS2225G04](#) [TG39W000000](#) [1825075-1](#)  
[MSS42G](#) [TG36WS80065](#) [T105S1CWZBE](#) [SLB124145](#) [SLB1280R5](#) [SLB1340R45](#) [25136NLDB](#)