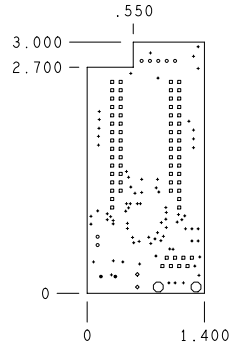


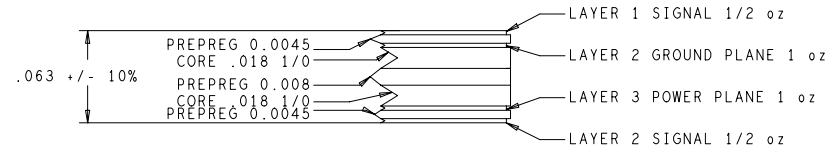
REVISIONS			
REV	DESCRIPTION	DATE	APPROVED
**	RELEASE FOR MANUFACTURING	11/30/05	CKS



DRILL CHART				
ALL UNITS ARE IN MILS				
FIGURE	SIZE	TOLERANCE	PLATED	QTY
.	10.0	0.003 -0.010	PLATED	77
o	35.0	0.003	PLATED	68
o	40.0	0.003	PLATED	7
o	43.0	0.003	PLATED	2
o	36.0	0.003	NON-PLATED	2
o	128.0	0.003	NON-PLATED	2

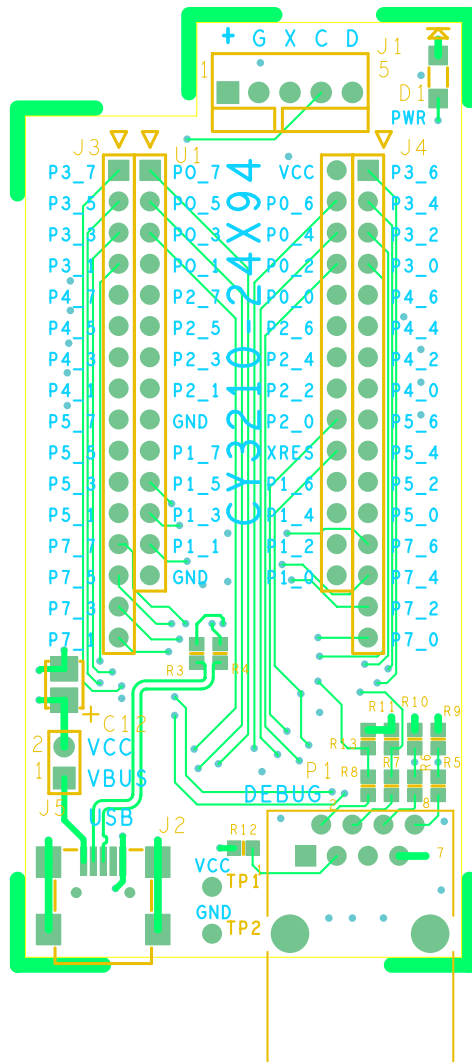
NOTES: UNLESS OTHERWISE SPECIFIED

- MATERIAL:
  - EPOXY GLASS LAMINATE AND PREPREG, TYPE FR-4.
  - USE HTE COPPER 1/2 oz. COPPER FOIL EXTERNAL LAYERS AND 1 oz. COPPER FOIL FOR INTERNAL LAYERS. UNLESS OTHERWISE SPECIFIED IN STACK VIEW.
  - OVERALL METAL TO METAL THICKNESS .063 +/- 10%
- DRILLING:
  - DIAMETERS IN DRILL TABLE ARE FINISHED HOLE SIZES +/- .003. UNLESS OTHERWISE SPECIFIED IN DRILL TABLE.
  - TEARDROP ALLOWED ON ENTRY OF VIA ON EVERY TRACE LAYER.
- PLATING:
  - COPPER PLATING IN THRU-HOLES .001 min.
- MARKING:
  - SILKSCREEN IN WHITE NON-CONDUCTIVE EPOXY INK ON PRIMARY SIDE OF THE BOARD OR BOTH SIDES IF APPLICABLE.
  - FABRICATOR TO ETCH DATE CODE AND LOGO ON SECONDARY SIDE.
- FINAL FABRICATION:
  - SOLDERMASK PRIMARY AND SECONDARY SIDE OF BOARD USING LIQUID PHOTOIMAGABLE MASK MATERIAL OVER BARE COPPER PER IPC-SM-840. MASK ARTWORKS PROVIDED ARE 1:1 SOLDERMASK COLOR \*\*GREEN\*\*.
- WHEN REQUIRED, COPPER FINISH SHALL BE FINISHED TIN-LEAD (60-40 MIN) HASL.
- BOARDS SHALL BE PURCHASED FROM UL RECOGNIZED VENDORS ONLY AND SHALL BE MARKED IN COPPER ON SECONDARY SIDE OF BOARD WITH VENDORS UL IDENTIFICATION. FLAMABILITY RATING (94-V0). AND DATE CODE (WYYY).
- MANUFACTURE BOARD TO BE IN ACCORDANCE WITH PERFORMANCE STANDARD IPC-6011/6012 CLASS 2 BOARD TO BE INSPECTED PER IPC-600-A CLASS 2.
- MAXIMUM WRAP OR TWIST SHALL NOT EXCEED .010 in/in.



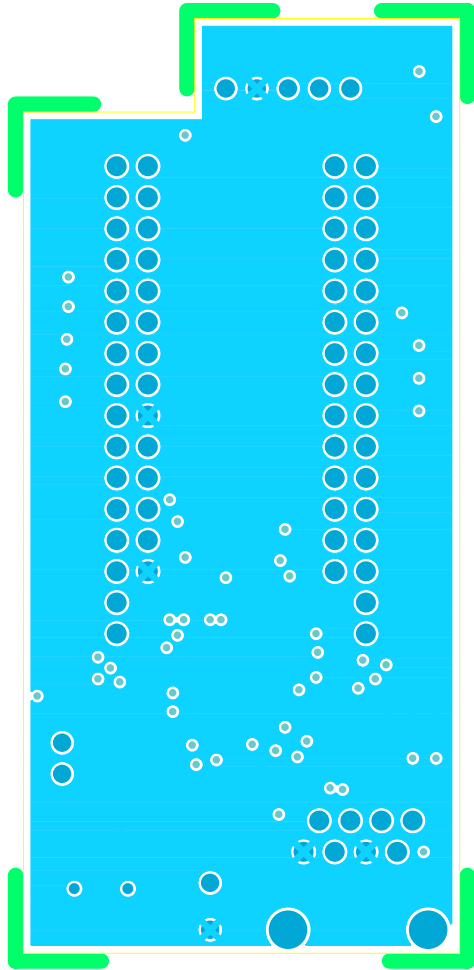
NOTE: 10 MIL 16 MIL SPACING TRACES ON LAYER 1 DIFFERENTIAL IMPEDANCE CONTROLLED TO 90 OHMS +/- 10% TESTED

UNLESS OTHERWISE SPECIFIED	SIGNATURES	DATE	12230 World Trade Drive #200 San Diego, CA 92128 (858) 613-7931	<b>FABRICATION DRAWING</b> <b>CY8C24794 POD</b> <b>MODULE DESIGN</b>		
DIMENSIONS ARE IN INCHES	DRAWN ZMK	10/12/05				
TOLERANCES ON: ANGLES +/- 2°	CHECKED ECU	11/30/05				
2 PL DECIMALS +/- .010	ENGRG CKS	11/30/05				
3 PL DECIMALS +/- .005	ISSUED		SIZE C	FSCM NO	DWG NO PDC-9278	REV **
THIRD ANGLE PROJECTIONS			SCALE: 1/1	SHEET: 1 OF 1		
CYPRESS PROPRIETARY	THIS DOCUMENT CONTAINS CONFIDENTIAL, PROPRIETARY INFORMATION THAT IS CYPRESS SEMICONDUCTOR PROPERTY. DO NOT DISCLOSE TO OR DUPLICATE FOR OTHERS EXCEPT AS AUTHORIZED BY CYPRESS.					

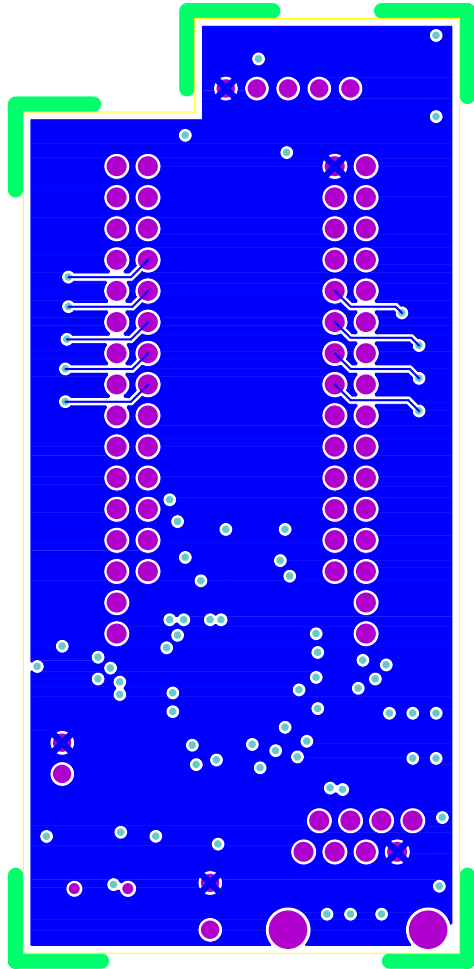


PDC-9278 REV \*\* PRIMARY SIDE

PDC-9278 REV \*\* PRIMARY SILKSCREEN



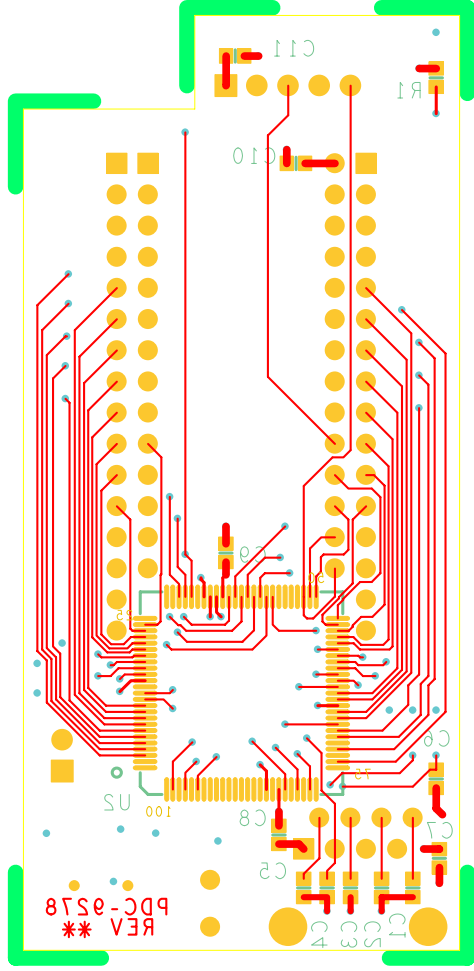
PDC-9278 REV\*\* LAYER 2 GND



PDC-9278 REV\*\* LAYER 3 VCC

PDC-0578 REV \*\* SECONDARY SIDE

PDC-0578 REV \*\* SECONDARY SILKSCREEN



## X-ON Electronics

Largest Supplier of Electrical and Electronic Components

*Click to view similar products for [Emulators/Simulators](#) category:*

*Click to view products by [Cypress](#) manufacturer:*

Other Similar products are found below :

[AC244062](#) [AC244064](#) [SPC563M64CAL144](#) [SPC563M64CAL176](#) [ST7MDT2-EMU2B](#) [IM3316](#) [IM1281B](#) [IM1275](#) [IM1227](#) [IM1259G](#)  
[IM1253B](#) [IM1253B\(D\)](#) [MJYS-QKJL-40/380V](#) [MJYS-QKJL-75/380V](#) [MJYD-JL-75/380V](#) [MJYD-JL-40/380V](#) [CI-B02CS01S](#) [CI-B03CS01S](#)  
[CI-BO3GS01S](#) [GD10PJX120L2S](#) [HEDS-9730#Q50](#) [HEDS-9700#F50](#) [L-MZ07](#) [L-MZ02](#) [L-MZ021](#) [TXVT4G6M-S](#) [JL\\_MOD\\_FH\\_V1.0](#)  
[MKSDSOCKET-Pinboard V1](#) [CY3250-24X33](#) [AC244060](#) [7027-D-350](#) [DS1747WP-120IND+](#) [AC244061](#) [S5U1C31W74T1300](#)  
[S5U1C17M13T2100](#) [S5U1C17M13T1100](#) [J-Link ULTRA+](#) [AFM201TI-AY2LED2](#) [AFW121T-EVB](#) [CP2102](#) [CE118M12](#) [ESP32-A1S](#)  
[ESP32-CAM](#) [ESP-32S](#) [ADZS-ICE-1000](#) [ADZS-ICE-2000](#) [USB-EA-CONVZ](#) [BH-USB-100v2-ARM](#) [BH-USB-100v2D](#) [BH-USB-200](#)