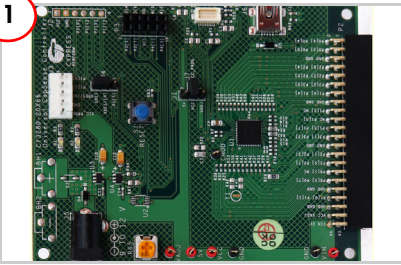
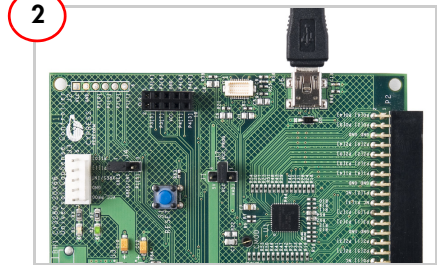


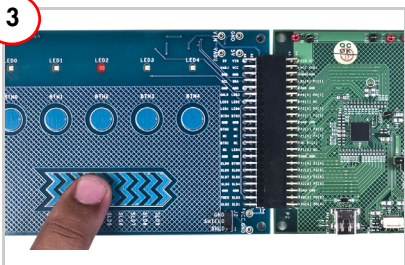
CY3280-20x66 UNIVERSAL CAPSENSE CONTROLLER KIT QUICK START GUIDE



Remove CY3280-20x66 Universal CapSense Controller Board from package. Connect the CY3280-SLM board (to be purchased separately) to the P2 connector.



Ensure that shunt is placed between 5 V and VCC of jumper J1. Plug in the USB cable to the CY3280-20x66 Universal CapSense Controller Board.

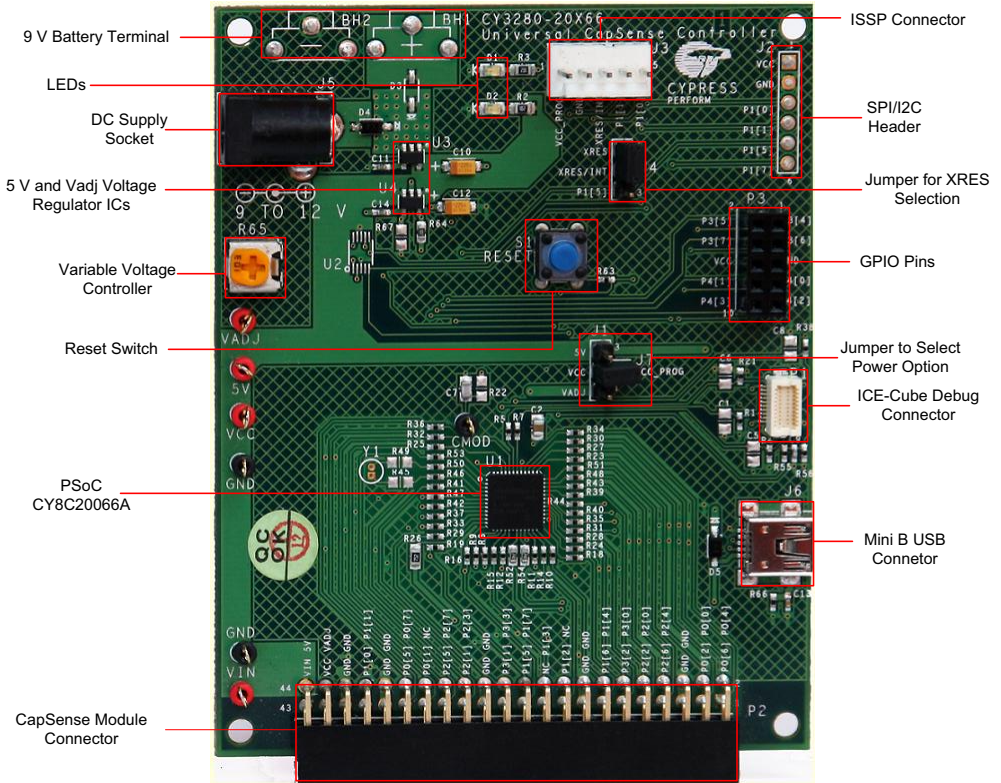


Touch the CapSense button or slider. The respective LEDs lights up.



Insert the kit CD into the CD drive of your PC. Install the kit contents, PSoC Designer, PSoC Programmer, and Bridge Control Panel. After the kit contents and software are installed, PSoC Designer can be used to customize existing example projects or create new ones.

CY3280-20x66 Universal CapSense Controller Board Details



For the latest information about this kit visit
www.cypress.com/go/CY3280-20x66



X-ON Electronics

Largest Supplier of Electrical and Electronic Components

Click to view similar products for [Touch Sensor Development Tools](#) category:

Click to view products by [Cypress](#) manufacturer:

Other Similar products are found below :

[ATMXT1066T2-DEV-PCB](#) [ATMXT336UDEVPCB](#) [ATMXT641TDAT-I2C-PCB](#) [1374](#) [MIKROE-1906](#) [1602](#) [1982](#) [STEVAL-PCC009V3](#)
[ATSAMD20-QTRDEMO](#) [ATQT2-XPRO](#) [ATQT6-XPRO](#) [2340](#) [DM160221](#) [DM160229](#) [DM160222](#) [ATQT5-XPRO](#) [DFR0129](#) [SEN0170](#)
[SLEXP8019A](#) [SLEXP8018A](#) [1375](#) [DFR0386](#) [SEN0148](#) [DK-000013-03](#) [ROB0103](#) [cs-useful-01](#) [SEN0184](#) [SX8651EVKA](#) [1362](#) [2024](#) [3575](#)
[4830](#) [AS8579-TS_EK_DB](#) [ATQT600](#) [IQS227/228ASEV01](#) [SKU-6515](#) [CY3280-MBR2](#) [CY3280-MBR3](#) [DFR0030](#) [DM160219](#) [AC160219](#)
[ATEVK-MXT1066T2-A](#) [ATEVK-MXT1189TAT-C](#) [ATEVK-MXT1189TDAT-A](#) [ATEVK-MXT1665TAT-C](#) [ATEVK-MXT1665TDAT-A](#)
[ATEVK-MXT225TDAT-A](#) [ATEVK-MXT225TDAT-B](#) [ATEVK-MXT2952TD-A](#) [ATEVK-MXT641TDAT-A](#)