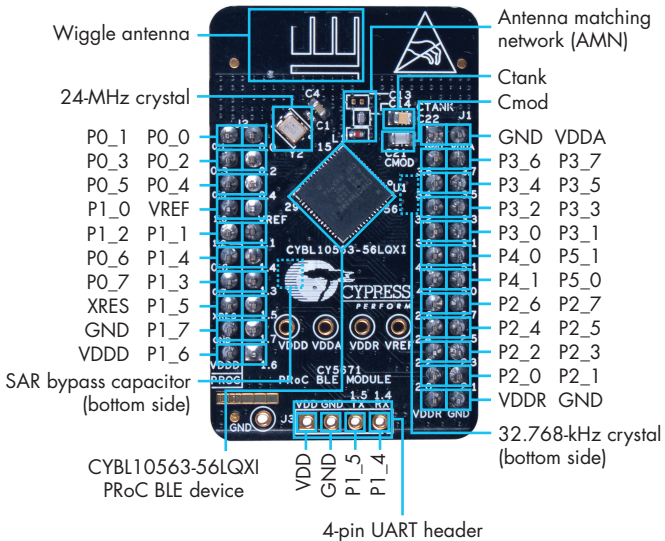


## CY5671 PRoC™ BLE MODULE

CY5671 PRoC™ BLE Module is a complete, certified solution to add BLE connectivity to any embedded system. The module features a PRoC BLE device (CYBL10563), two crystals, a PCB antenna, and other passives while providing access to all GPIOs of the device.

Visit [www.cypress.com/BLE](http://www.cypress.com/BLE) for more information on Cypress's BLE solutions.

PRoC BLE is a single-chip solution with a 48-MHz ARM® Cortex®-M0 CPU, BLE radio, CapSense® technology for touch sensing, two serial communication blocks (SCBs), a 12-bit ADC, four Timer/Counter/PWMs, four additional PWMs, I<sup>2</sup>S for digital audio, and segment LCD direct-drive capability.



**Fig-1: Pinout Description for PRoC BLE Module**

Note: To apply power to the module, use the VDD pin (1.9 V - 5.0 V) and GND pin.

# CY5671 PROc™ BLE MODULE

## STANDALONE USE WITH PSoC CREATOR™ IDE AND CY8CKIT-002 MINIPROG3

**Step 1:** Select the 5-pin connector setting in PSoC Creator or PSoC Programmer.

**Step 2:** You can use 0.1" male headers (not included) or jumper wires.



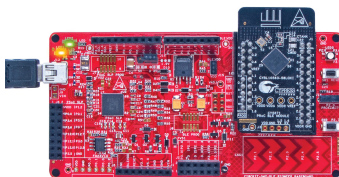
| Pin Mapping |        |
|-------------|--------|
| CY8CKIT-002 | CY5671 |
| VTARG       | VDD    |
| GND         | GND    |
| RES         | XRES   |
| SCLK        | PO_7   |
| SDAT        | PO_6   |

**Fig-2: Programming and Debugging with CY8CKIT-002**

## USING THE PROc BLE MODULE WITH THE CY8CKIT-042-BLE PIONEER KIT

**Step 1:** Plug the module on the CY8CKIT-042-BLE Pioneer Kit baseboard.

**Step 2:** Create your design in PSoC Creator IDE and use the BLE Pioneer Kit to program and debug.



**Fig-3: Programming and Debugging with CY8CKIT-042 BLE Pioneer Baseboard**

CY5671 is qualified for the Bluetooth 4.1 specification. The module, along with the CY8CKIT-042 BLE Pioneer Baseboard, has regulatory approval (for development purpose only) for the 2.4-GHz unlicensed frequency range in countries including USA (FCC), Canada (IC), Europe (CE) and Japan (JRF/TELEC).

Additional regulatory certification will be required to integrate the module into an end product. Contact [support@cypress.com](mailto:support@cypress.com) for details.

For more information about this kit, visit [www.cypress.com/CY5671](http://www.cypress.com/CY5671)

CY5671

Manufactured by Cypress Semiconductor.



005-100920

Contains Model: CY5671

FCC ID: WAP-CY5671

IC: 7922A-CY5671



## X-ON Electronics

Largest Supplier of Electrical and Electronic Components

*Click to view similar products for [Bluetooth Development Tools - 802.15.1 category](#):*

*Click to view products by [Cypress manufacturer](#):*

Other Similar products are found below :

[DA14580PRODTLKT](#) [1628](#) [SP14808ST](#) [MBH7BLZ02-EF-KIT](#) [FWM7BLZ20-EB-KIT](#) [SP14801-DUT](#) [SKY66111-21EK1](#) [SECO-RSL10-TAG-GEVB](#) [ENW89857AXKF](#) [3026](#) [MIKROE-2471](#) [MOD-NRF8001](#) [BLE-IOT-GEVB](#) [450-0184](#) [EKSHCNZXZ](#) [EVAL\\_PAN1026](#) [EVAL\\_PAN1720](#) [EVAL\\_PAN1740](#) [2267](#) [2479](#) [2487](#) [2633](#) [STEVAL-IDB005V1D](#) [STEVAL-IDB001V1](#) [MIKROE-2545](#) [SIPKITSLF001](#) [2995](#) [STEVAL-IDB007V1M](#) [2829](#) [DFR0267](#) [DFR0296](#) [DFR0492](#) [TEL0073](#) [BM-70-CDB](#) [WSM-BL241-ADA-008DK](#) [STEVAL-BTDP1](#) [ACD52832](#) [TEL0095](#) [ISP1507-AX-TB](#) [RN-4871-PICTAIL](#) [DA14695-00HQDEVKT-P](#) [DA14695-00HQDEVKT-U](#) [EBSHJNZXZ](#) [EKSGJNZWY](#) [EKSHJNZXZ](#) [BMD-200-EVAL-S](#) [ACN BREAKOUT BOARD](#) [ACN SKETCH](#) [2269](#) [2746](#)