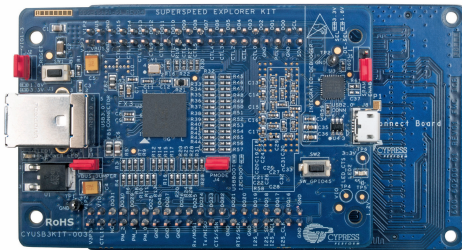
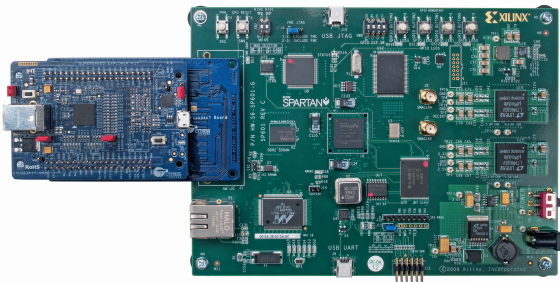


FMC INTERCONNECT BOARD CYUSB3ACC-005

1. Connect the EZ-USB[®] FX3[™] SuperSpeed Explorer (CYUSB3KIT-003) to the FMC Interconnect Board (CYUSB3ACC-005)

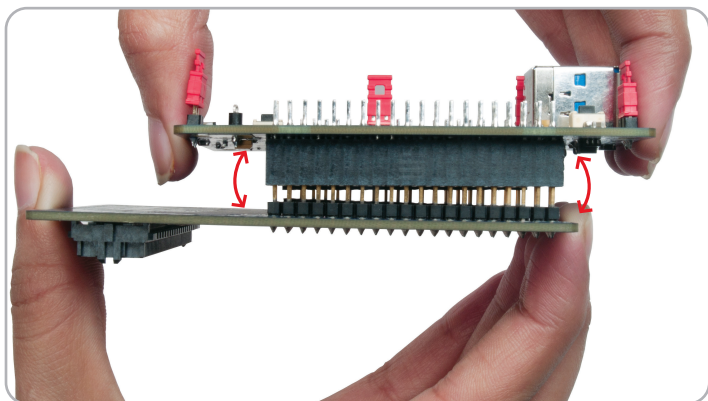


2. Plug the FMC Interconnect Board into the Xilinx[®] FPGA board (The Xilinx FPGA board is not part of this kit)



3. Make sure that Jumper J5 on CYUSB3KIT-003 is open
4. Learn to use FX3 in applications involving Xilinx FPGA with the application note **AN65974 - Designing with the EZ-USB[®] FX3[™] Slave FIFO Interface** available at <http://www.cypress.com/go/AN65974>

FMC INTERCONNECT BOARD CYUSB3ACC-005



Note:

Please take care when removing the accessory board from the SuperSpeed Explorer Kit board. The suggested removal method is shown in the picture above. Hold the accessory board and use a rocking motion to separate the boards safely

For the latest information about this interconnect board and to download the hardware files, visit www.cypress.com/go/CYUSB3ACC-005

For the latest information about EZ-USB FX3 SuperSpeed Explorer Kit (CYUSB3KIT-003) and to download Kit Software and Hardware files, visit www.cypress.com/go/SuperSpeedExplorerKit

X-ON Electronics

Largest Supplier of Electrical and Electronic Components

Click to view similar products for [Interface Development Tools](#) category:

Click to view products by [Cypress](#) manufacturer:

Other Similar products are found below :

[ADP5585CP-EVALZ](#) [CHA2066-99F](#) [AS8650-DB](#) [416100120-3](#) [XR18910ILEVB](#) [XR21B1421IL28-0A-EVB](#) [EVAL-ADM2491EEBZ](#)
[MAXREFDES23DB#](#) [MAX13235EEVKIT](#) [DFR0257](#) [XR22404CG28EVB](#) [ZLR964122L](#) [ZLR88822L](#) [DC327A](#) [PIM511](#) [PIM536](#) [PIM517](#)
[DEV-17512](#) [STR-FUSB3307MPX-PPS-GEVK](#) [ZSSC3240KIT](#) [P0551](#) [MAX9121EVKIT](#) [PIM532](#) [ZSC31010KITV2P1](#) [MIKROE-2335](#)
[XR20M1172G28-0B-EB](#) [1764](#) [1833](#) [1862](#) [EVB-USB82514](#) [ATA6628-EK](#) [EVAL-CN0313-SDPZ](#) [2264](#) [MCP23X17EV](#) [PS081-EVA-HR](#)
[MODULE](#) [237](#) [SMA2RJ45EVK/NOPB](#) [FR12-0002](#) [MAFR-000455-001](#) [BOB-13263](#) [CPC5622-EVAL-600R](#) [SKYFR-000743](#) [SKYFR-](#)
[000827](#) [SKYFR-000982](#) [MIKROE-2750](#) [292](#) [DFR0065](#) [DFR0077](#) [TEL0010](#) [TEL0038](#)