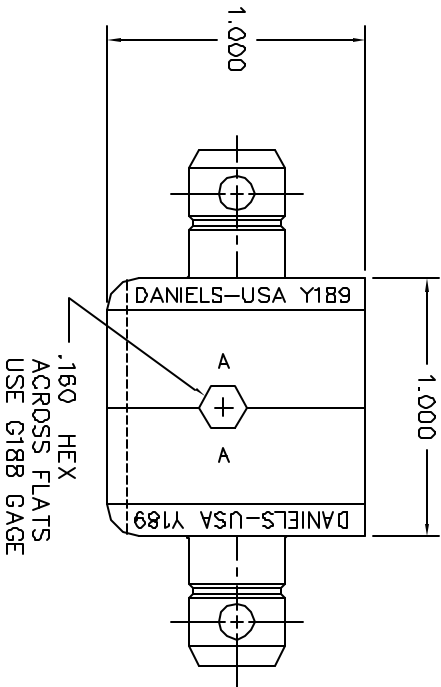
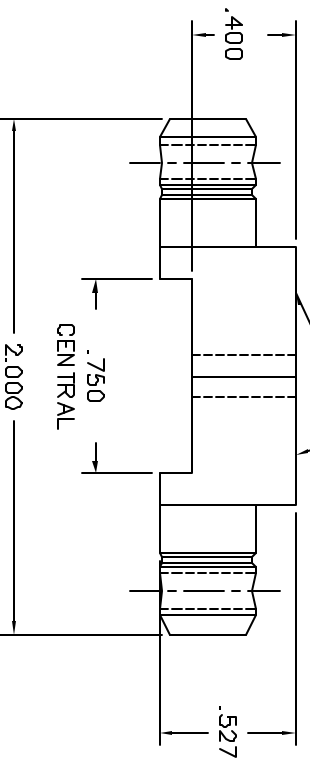


"M22520/5-10"  
"CAGE 11851"



REVISIONS			
REV. NUMBER	E.C.D. NUMBER	DESCRIPTION	BY DATE
1		ORIGINAL RELEASE	LLW 4/20/89
			TS 4/89

UNCONTROLLED DOCUMENT  
WILL NOT BE UPDATED

RESTRICTED & CONFIDENTIAL  
 CONSTITUTIONAL PROPERTY OF DANIELS MANUFACTURING CORP. NOT TO BE DISCLOSED TO OTHERS, REPRODUCED OR USED FOR ANY OTHER PURPOSE EXCEPT AS AUTHORIZED IN WRITING BY DANIELS MANUFACTURING. MUST BE RETURNED TO DANIELS MANUFACTURING OR DESTROYED BY ORDER OF OTHER PURSUANT TO WHICH LENT.

DO NOT SCALE DRAWING

ITEM	PART NO.	QTY.	DESCRIPTION/REMARKS																								
DRN LW	DATE 4/20/89																										
CHKD TS	DATE 4/21/89																										
APPRD WLP	DATE 4/21/89																										
APPRD AAM	DATE 4/21/89																										
<table border="1"> <tr> <td colspan="2">TITLE</td> <td colspan="2">DIE SET</td> </tr> <tr> <td colspan="2">WHERE USED</td> <td colspan="2">(M22520/5-10) ENVELOPE DRAWING</td> </tr> <tr> <td>SIZE</td> <td>SCALE</td> <td>DWG P/N</td> <td>SHEET 1 OF 1</td> </tr> <tr> <td>B</td> <td>Z/1</td> <td>Y189-ENV</td> <td></td> </tr> <tr> <td>POSTING</td> <td></td> <td>P/N</td> <td>REV.</td> </tr> <tr> <td></td> <td></td> <td>Y189-ENV</td> <td>1</td> </tr> </table>				TITLE		DIE SET		WHERE USED		(M22520/5-10) ENVELOPE DRAWING		SIZE	SCALE	DWG P/N	SHEET 1 OF 1	B	Z/1	Y189-ENV		POSTING		P/N	REV.			Y189-ENV	1
TITLE		DIE SET																									
WHERE USED		(M22520/5-10) ENVELOPE DRAWING																									
SIZE	SCALE	DWG P/N	SHEET 1 OF 1																								
B	Z/1	Y189-ENV																									
POSTING		P/N	REV.																								
		Y189-ENV	1																								



## X-ON Electronics

Largest Supplier of Electrical and Electronic Components

*Click to view similar products for [Hand Tools](#) category:*

*Click to view products by [Daniels](#) manufacturer:*

Other Similar products are found below :

[568681-1](#) [576786-2](#) [58061-1](#) [58176-1](#) [58177-1](#) [58177-2](#) [58284-1](#) [59085](#) [0031](#) [59737-5](#) [015-0339-000](#) [015-8755-001](#) [600-146-06](#) [M15570-25](#) [62200-5709](#) [6-304052-1](#) [63443-1002](#) [63443-3513](#) [63443-4025](#) [63443-7114](#) [6-354778-5](#) [6-354779-2](#) [63600-2995](#) [63810-0105](#) [M8196914-08](#) [M819698-07](#) [662508-1](#) [662908-1](#) [679994-1](#) [679994-2](#) [68764-0001](#) [69001-0105](#) [69002-5525](#) [690124-7](#) [690191-1](#) [690191-4](#) [690696-1](#) [691409-4](#) [691667-1](#) [692006-2](#) [692655-7](#) [692776-1](#) [692776-4](#) [693077-3](#) [693077-4](#) [693597-1](#) [D20418-137](#) [D20419-189](#) [ESR-17x17](#) [ET-LY10](#)