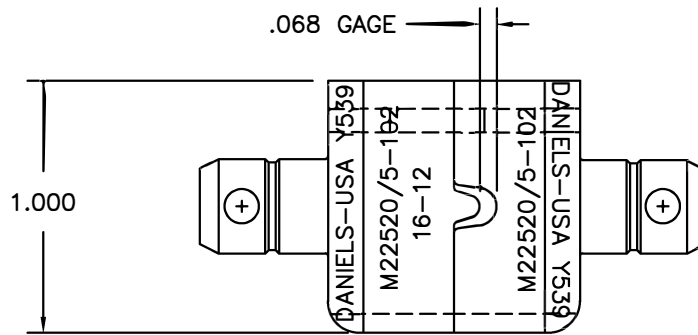
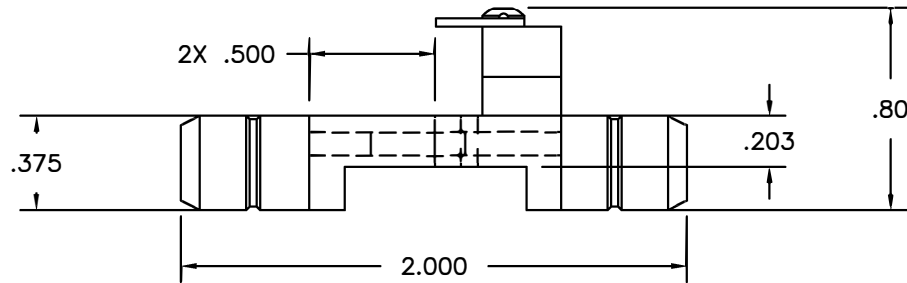


REVISIONS				
REV. SYM.	E.C.O. NUMBER	DESCRIPTION	BY DATE	APP'D DATE
1		ORIGINAL RELEASE	JWJ 11/13/99	RRR 11/13/99
2		ADDED GAGE INFO	ENF 7/16/13	RRR 7/16/13



1. USE G264 TO VERIFY GAGE DIMENSION

**UNCONTROLLED DOCUMENT
WILL NOT BE UPDATED**

RESTRICTED & CONFIDENTIAL		MATERIAL		ITEM	PART NO.	QTY.	DESCRIPTION/REMARKS		
CONFIDENTIAL PROPERTY OF DANIELS MANUFACTURING CORP. NOT TO BE DISCLOSED TO OTHERS, REPRODUCED OR USED FOR ANY OTHER PURPOSE, EXCEPT AS AUTHORIZED IN WRITING BY DANIELS MANUFACTURING. MUST BE RETURNED TO DANIELS MANUFACTURING CORP. ON COMPLETION OF ORDER OR OTHER PURPOSE FOR WHICH LENT.		HEAT TREAT		DRN.	J. JOYCE	DATE	11/13/99		
				CHK'D.	RRR	DATE	11/13/99		
				APP'D.		DATE			
				APP'D.		DATE			
DO NOT SCALE DRAWING		FINISH		NOTE:		TITLE			
				THIS DRAWING IS AN OUTLINE DRAWING OF THE RESPECTIVE DMC PART NUMBER INDICATED. ACTUAL DMC PART NUMBER IS DRAWING NUMBER WITHOUT THE "-ENV" SUFFIX.		DIE SET (M22520/5-102) ENVELOPE DRAWING			
				WHERE USED:	SIZE	SCALE	CAD P/N	SHEET	OF
					B	2X	Y539-ENV	1	1
				POSTING	DWG. NO.	Y539-ENV		REV.	
								2	



DANIELS MANUFACTURING CORP.
ORLANDO, FLORIDA
GAGE 11851

X-ON Electronics

Largest Supplier of Electrical and Electronic Components

Click to view similar products for [daniels manufacturer](#):

Other Similar products are found below :

[M81969/17-03](#) [M81969/17-09](#) [DAK20B](#) [DAK83S-20](#) [DRK20A](#) [TH452](#) [BT-J-130](#) [M81969/8-03 REV B](#) [TH70-1](#) [DRK230](#) [359-0697-020](#)
[DRK100-1](#) [MS24256A20](#) [M22520/5-01](#) [K13-1](#) [Y143](#) [MS24256R20](#) [DAK20](#) [BT-SJ-468-1](#) [BT-J-133](#) [M22520/4-01](#) [DRK95-20S](#) [GS100-1](#)
[MH-860](#) [M300BT](#) [AF8](#) [DAK95-22MB](#) [M81969/8 01](#) [DRK145](#) [AIC4EXT](#) [DBS-128-1](#) [M22520/5-105](#) [M81969/17-04 REV A](#) [Y631](#)
[DAK16A](#) [DAK282](#) [GMT232](#) [M22520/2-02](#) [M22520/2-13](#) [DRK95-16](#) [K338](#) [AF8-DAN](#) [M22520/37-01](#) [M22520/2-06](#) [TH29-1](#) [DAK168-12](#)
[DRK38](#) [M81969/8-07](#) [DAK95-16B](#) [M81969/8-08](#)