

PART NAME: STANDOFF

SCALE: 4:1

DATE: 10/17/16

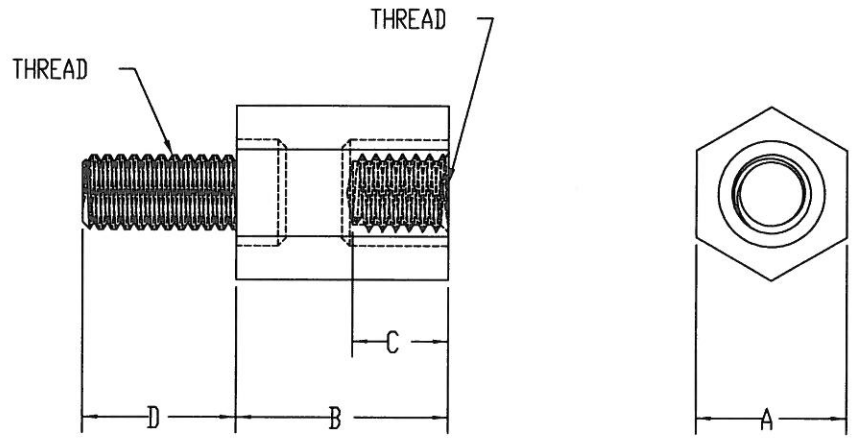
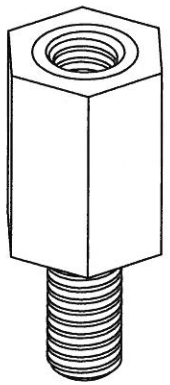
DR. BY: JAM



P/N: SH1002

THIS DRAWING IS THE PROPERTY OF DAVIES MOLDING COMPANY, IS SUBMITTED SOLELY AS A DESIGN OR ENGINEERING PROJECT. WE ACCEPT NO RESPONSIBILITY WHATSOEVER FOR THE PRACTICAL APPLICATION OF THE PIECES MADE TO THIS DESIGN.

DAVIES PART #	THREAD	A	B	C	D
SH1002-A	M4	8	10	2.5	8
SH1002-B	M4	8	12	2.5	8
SH1002-C	M4	8	15	4.2	8
SH1002-D	M4	8	20	4.2	8
SH1002-E	M4	8	25	4.2	8
SH1002-F	M4	8	30	7.5	8
SH1002-G	M4	8	35	7.5	8
SH1002-H	M4	8	40	7.5	8
SH1002-J	M4	8	45	7.5	8
SH1002-K	M4	8	50	7.5	8
SH1002-L	M4	8	55	7.5	8
SH1002-M	M4	8	60	7.5	8
SH1002-N	M4	8	65	7.5	8
SH1002-P	M4	8	70	7.5	8
SH1002-Q	M4	8	75	7.5	8
SH1002-R	M4	8	80	7.5	8
SH1002-S	M4	8	85	7.5	8



MATERIAL: NYLON
COLOR: BLACK

STUD: STEEL
INTERNAL INSERT: BRASS

A	UPDATED TABLE	JAM	8/24/18
CHANGES			

X-ON Electronics

Largest Supplier of Electrical and Electronic Components

Click to view similar products for [Standoffs & Spacers](#) category:

Click to view products by [Davies Molding](#) manufacturer:

Other Similar products are found below :

[588-6208-02](#) [M0609-5-SS](#) [M0655-5-AL](#) [M0660-4-N](#) [M0671-5-N](#) [M0671-5-SS](#) [M0725-6-N](#) [M1273-3005-AL](#) [60187](#) [60202-SP](#) [60273](#)
[60335-SP](#) [60348-SP](#) [60419-SP](#) [60425-SP](#) [60473-SP](#) [60475-SP](#) [60477-SP](#) [60489-SP](#) [60491-SP](#) [60585-SP](#) [60762-SP](#) [60763-SP](#) [60872-SP](#)
[M1314-3005-AL](#) [M1314-3005-SS](#) [M1315-4007-N](#) [M1316-3005-N](#) [M1317-3506-SS](#) [M1320-3005-AL](#) [M1322-4007-N](#) [M1326-3005-AL](#)
[M1577-B-4007-B](#) [M2122-2545-SS](#) [M2140-3005-N](#) [M2145-4007-N](#) [M2147-3506-N](#) [M2148-3005-N](#) [M2162-3506-SS](#) [M2162-4007-N](#)
[M2162-4007-SS](#) [632A-9206-17](#) [634A-5005-19](#) [634A-7204-17](#) [636A-7108-17](#) [642A-9416-17](#) [643A-7615-19](#) [643A-9612-17](#) [647A-5013-17](#)
[647A-9687-17](#)