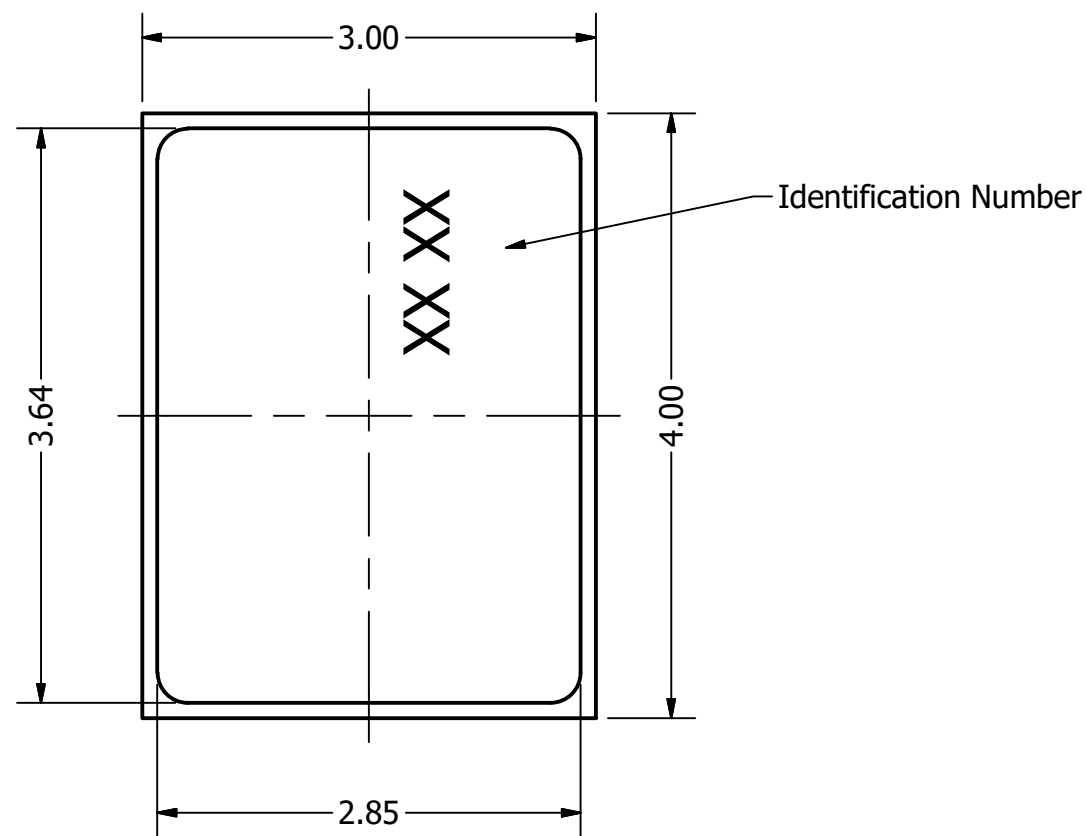
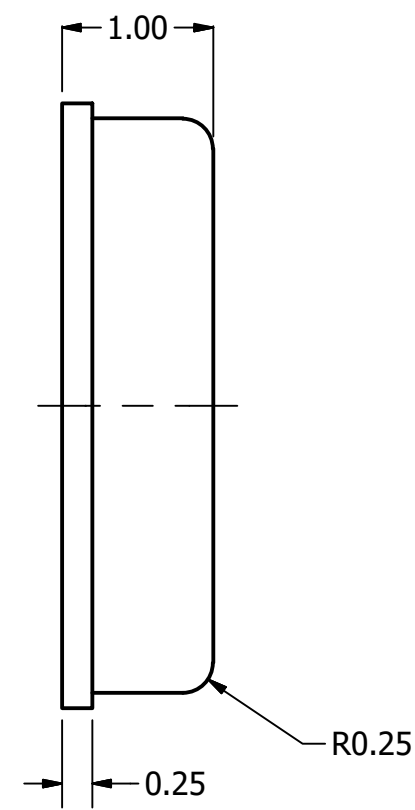


Part Number:	<b>MM042602-6</b>	
	DRAWN CJ	4/25/2016
Description:	Digital MEMS Microphone	
	CHECKED P.D	4/25/2016
	APPROVED J.S	4/25/2016
This document contains data proprietary to DB Unlimited. Any use or reproduction, in any form, without prior written permission of DB Unlimited is prohibited. All terms and conditions can be found at <a href="http://www.dbunlimitedco.com">www.dbunlimitedco.com</a>		

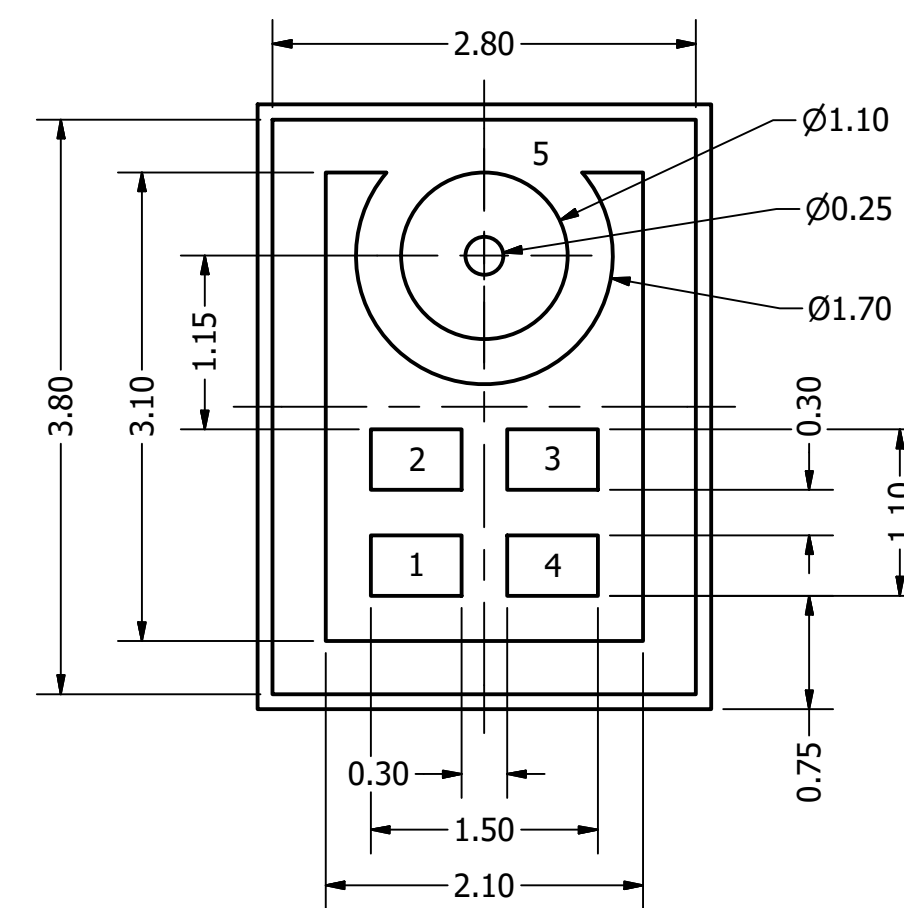
Top View



Side View



Bottom View



PIN 1	PIN 2	PIN 3	PIN 4	PIN 5
CLOCK	LR SEL	VDD	OUTPUT	GND

Items	Specifications	Conditions
Directivity	Omnidirectional	
Sensitivity	-26	dB
Frequency Range	100 ~ 7,000	Hz
Rated Voltage	2.1	V
Voltage Range	1.5 ~ 3.6	V
Max. Rated Current	800	mA
Storage Temperature	-40 ~ +125	°C
Operating Temperature	-40 ~ +100	°C
Signal to Noise Ratio	61	dB
Max. Rated Current (SLEEP mode)	50	uA
Mount Type	Surface Mount	
Connection Method	Surface Mount Pads	

REVISION HISTORY

REV	DESCRIPTION	DATE	APPROVED
	Released from Engineering	4/25/2016	J.S.
1	Updated dimensions, current, SNR	12/21/2017	C.E.

NOTES

- 1) All dimensions are in mm unless otherwise noted
- 2) All tolerances are ± 0.15 mm unless otherwise noted
- 3) All parts meet RoHS
- 4) Subject to change or redrawn without notice

## X-ON Electronics

Largest Supplier of Electrical and Electronic Components

*Click to view similar products for [MEMS Microphones](#) category:*

*Click to view products by [DB Unlimited](#) manufacturer:*

Other Similar products are found below :

[8103AC8333S25.00000X](#) [SPK0838HT4H-1](#) [MMICT4076-00-908](#) [MMICT4078-00-908](#) [MMICT3902-00-012](#) [1007079-1](#) [TA-35.328MBD-T](#)  
[TC-106.250MBD-T](#) [TD-22.5792MCD-T](#) [ASFLM1-25.000MHZ-C](#) [5000AC-8E-25E0-25.000000X](#) [3807ACTC3-33EG-8.19200](#) [TC-](#)  
[133.330MBD-T](#) [TC-38.400MBD-T](#) [TD-6.000MCD-T](#) [XX7V1A1PAM12](#) [9120AI-2C3-25E100.0000](#) [MP34DB01TR](#) [8002AI-13-33E16.00000](#)  
[5001AI-2D-18N0-20.000000](#) [UC2000-30GM-IUR2-V15](#) [MM034202-1](#) [INMP621ACEZ-R7](#) [ICS-41350](#) [ICS-43432](#) [ICS-40181](#) [ICS-40300](#)  
[ICS-40619](#) [ICS-40310](#) [MM042602-4](#) [PMM-3738-VM1010-R](#) [MP34DT06JTR](#) [ICS-52000](#) [SPW0442HR5H-1](#) [MM042602-5](#)  
[INMP504ACEZ-R7](#) [ICS-40720](#) [INMP510ACEZ-R7](#) [MM033802-1](#) [ICS-43434](#) [ICS-40618](#) [INMP521ACEZ-R7](#) [ICS-40180](#) [ASDM4-](#)  
[12.000MHZ-LC-T](#) [ASFLM2-28.224MHZ-LR-T](#) [9003AC-14-33EQ25.00000](#) [1618AA-13-33S-16.000000G](#) [SPQ0410HE5H-PB](#) [PMM-3738-](#)  
[VM1000-R](#) [ASEMDLP-LY](#)